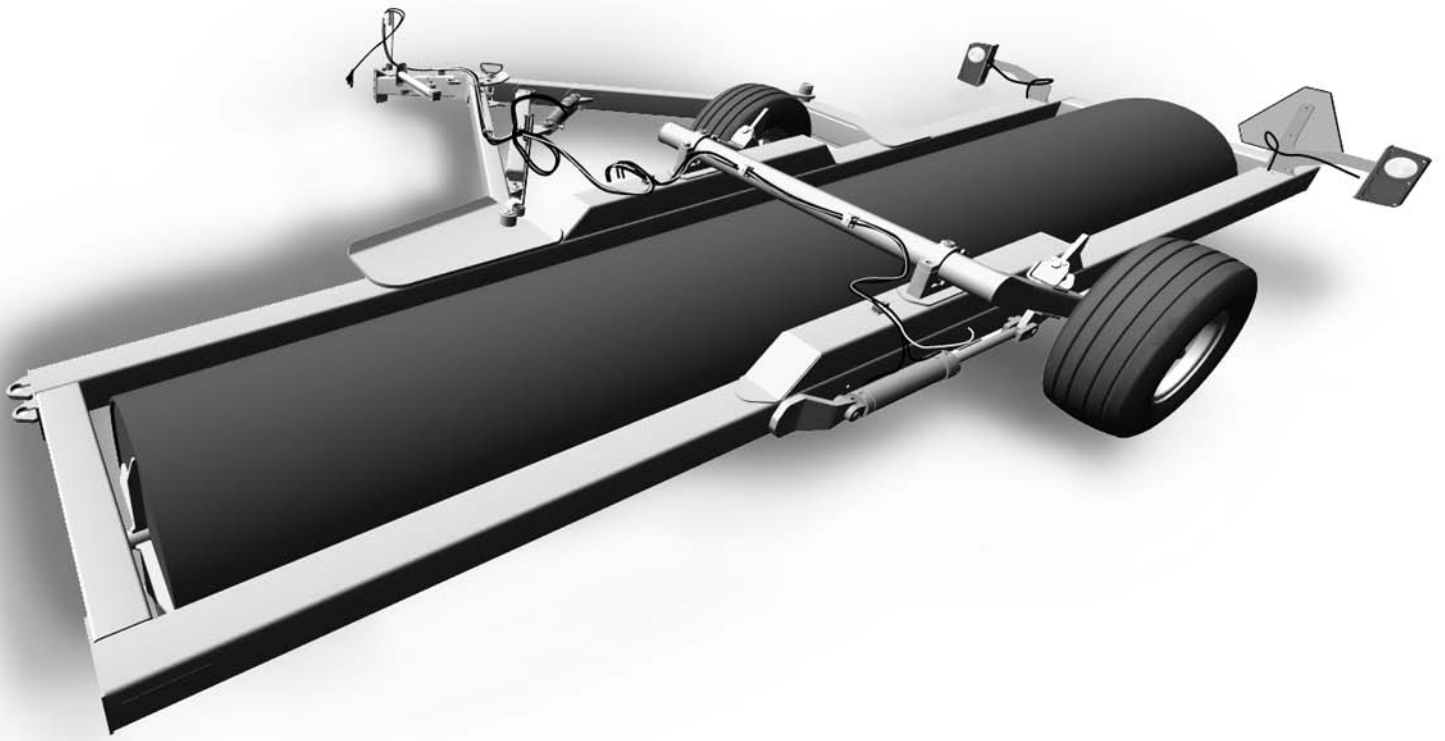


Degelman
INDUSTRIES LTD.

landroller

2036



MANUAL

143044



Degelman
INDUSTRIES LTD.

landroller

2036



Frame & drum	1
Rockshaft & wheels	3
Hitchpole & swing arm	5
Hydraulics	7
Safety lights	11
Operations	13
Safety, warranty	16



SAFETY

The safety instructions that follow pertain only to this specific equipment. You should be aware of agricultural & industrial safety especially related to heavy equipment. If you are not familiar with safety procedures then you should get training.

Improper use will result in maiming or death.



272 Industrial Drive, Box 830
Regina, Sask. Canada S4P 3B1
306 543-4447 543-2140 fx

degelman@degelman.com

www.degelman.com

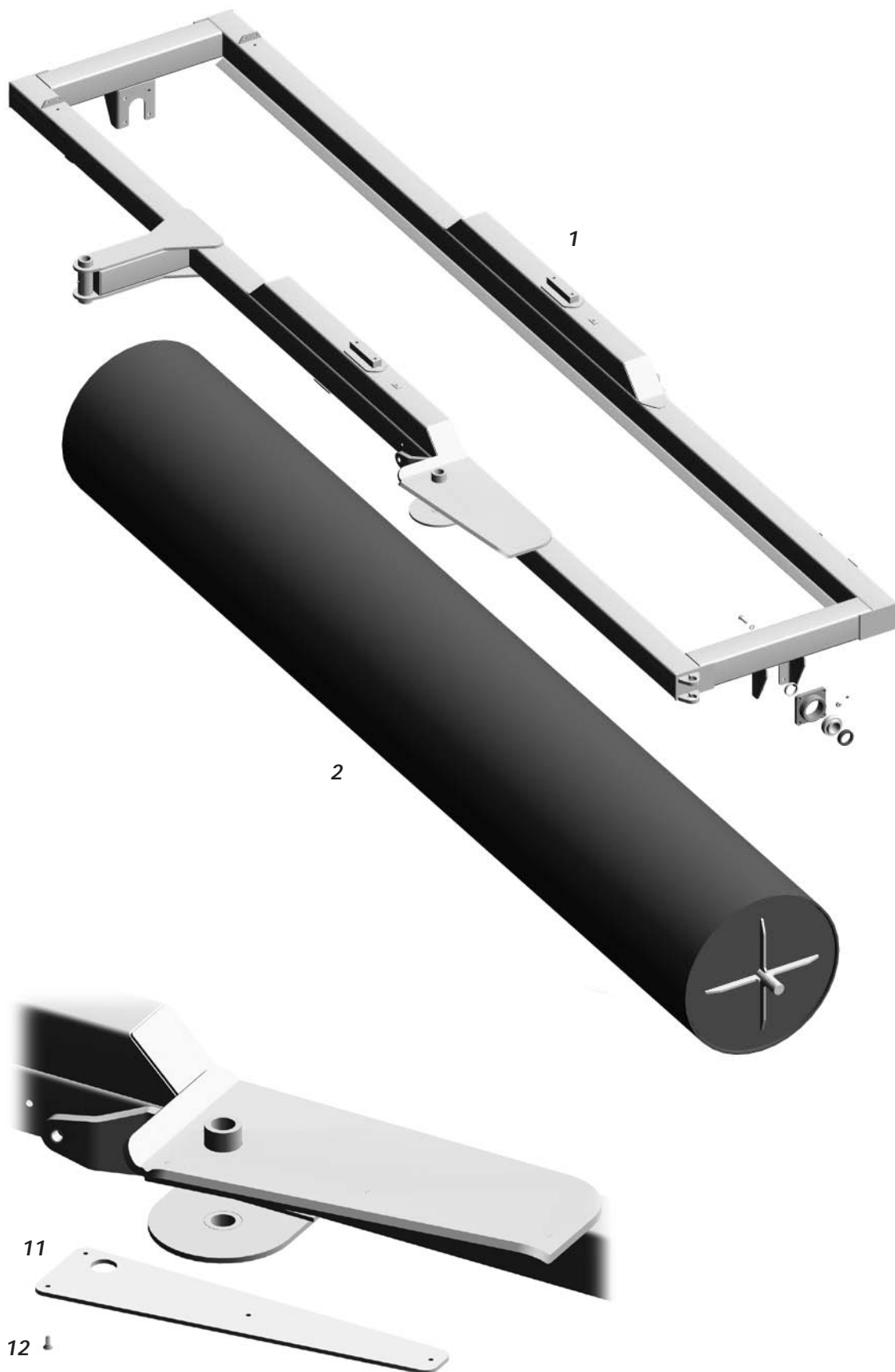
Degelman

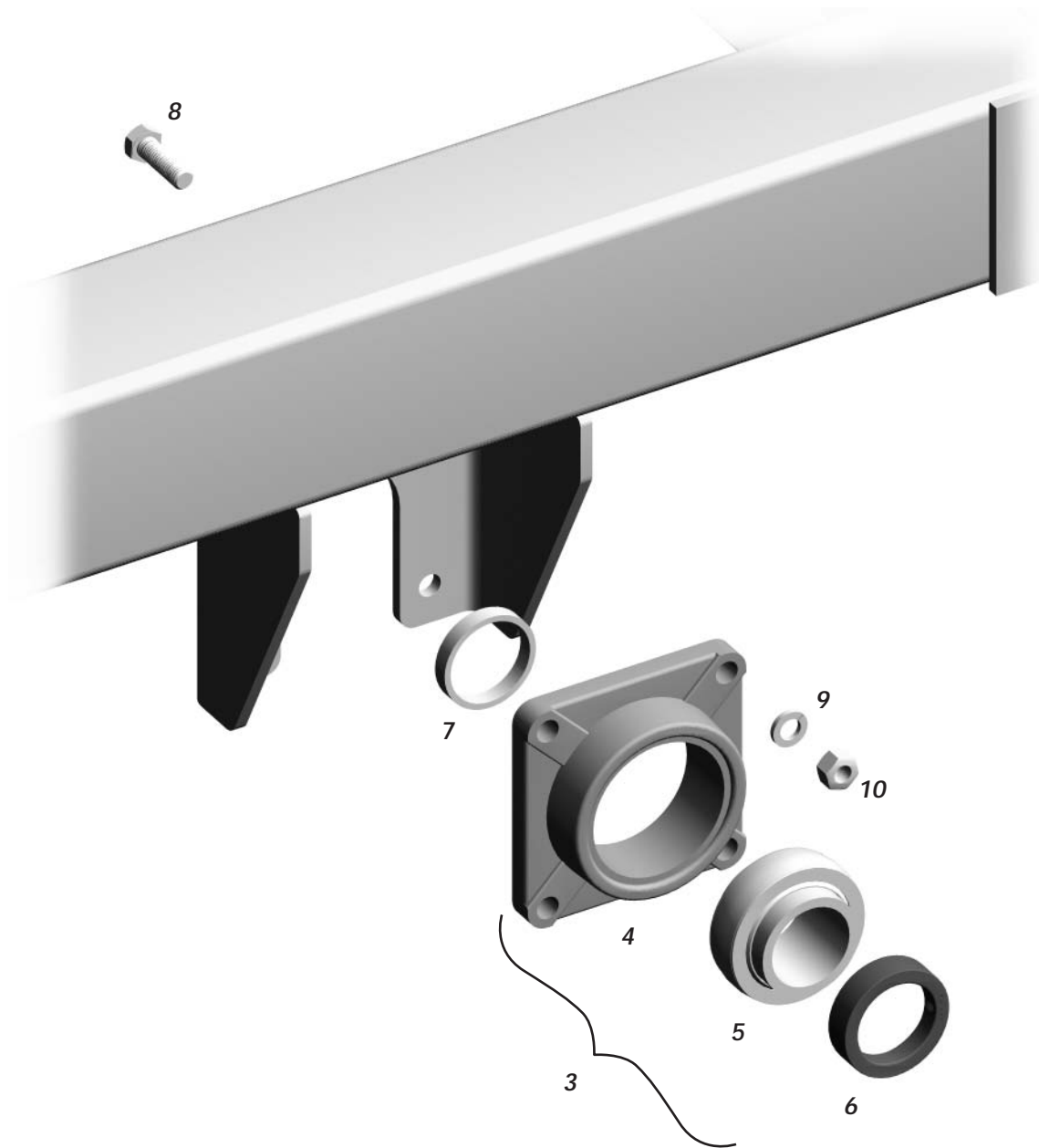
landroller

2036

143044

Frame & drum





1	244620	Frame	1
2	244610	Roller	1
3	117006	Bearing contains	1
4	117107	Bearing casting	1
5	117106	Bearing insert	1
6	117022	Lock ring	1
7	243604	Roller bushing	2
8	118026	Bolt 5/8 x 2	8
9	118508	Lock washer 5/8	8
10	118407	Nut 5/8	8
11	244636	Plastic wear pad	1
12	118894	Capscrews FHCS 3/8 x 1	4

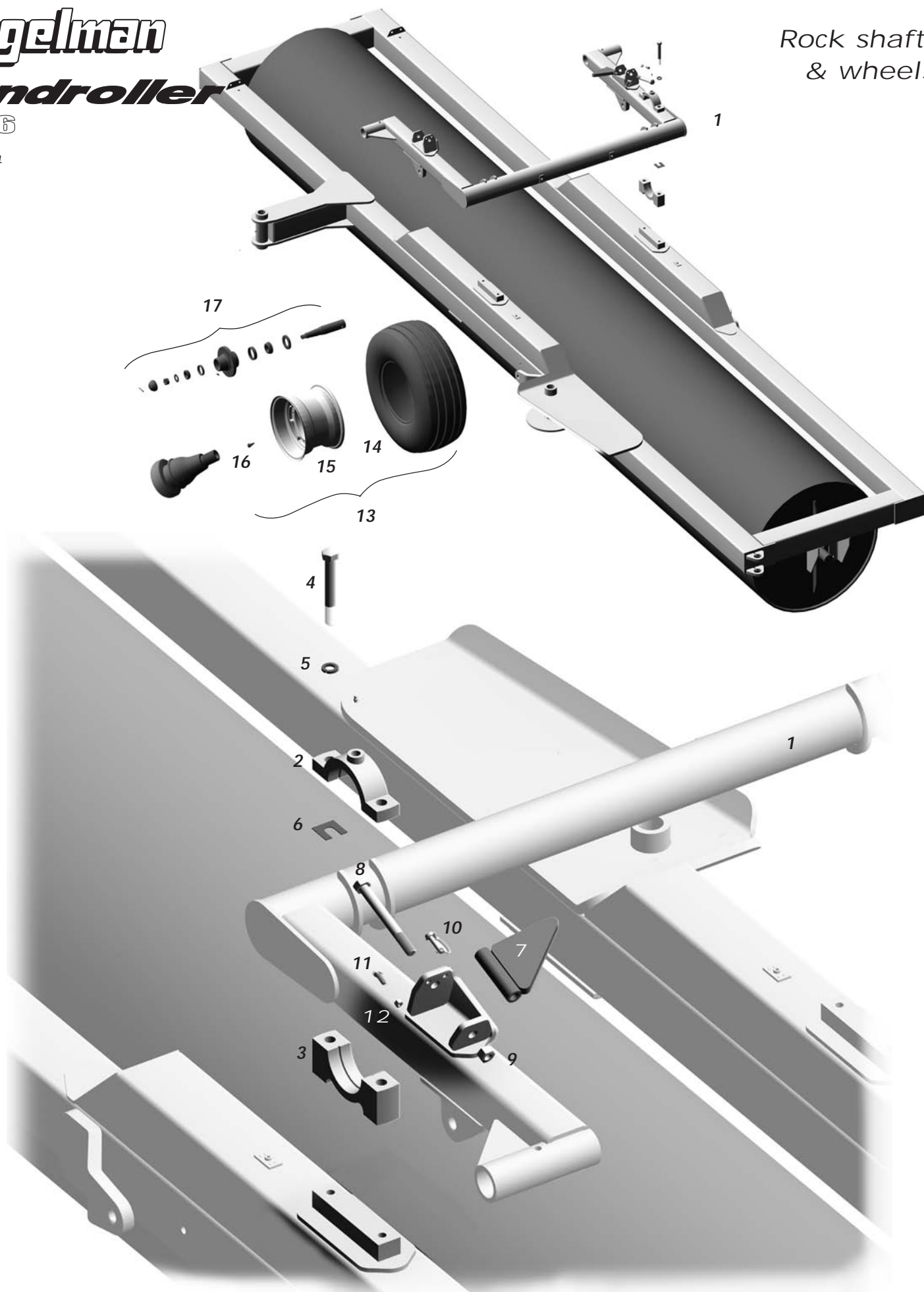
Degelman

landroller

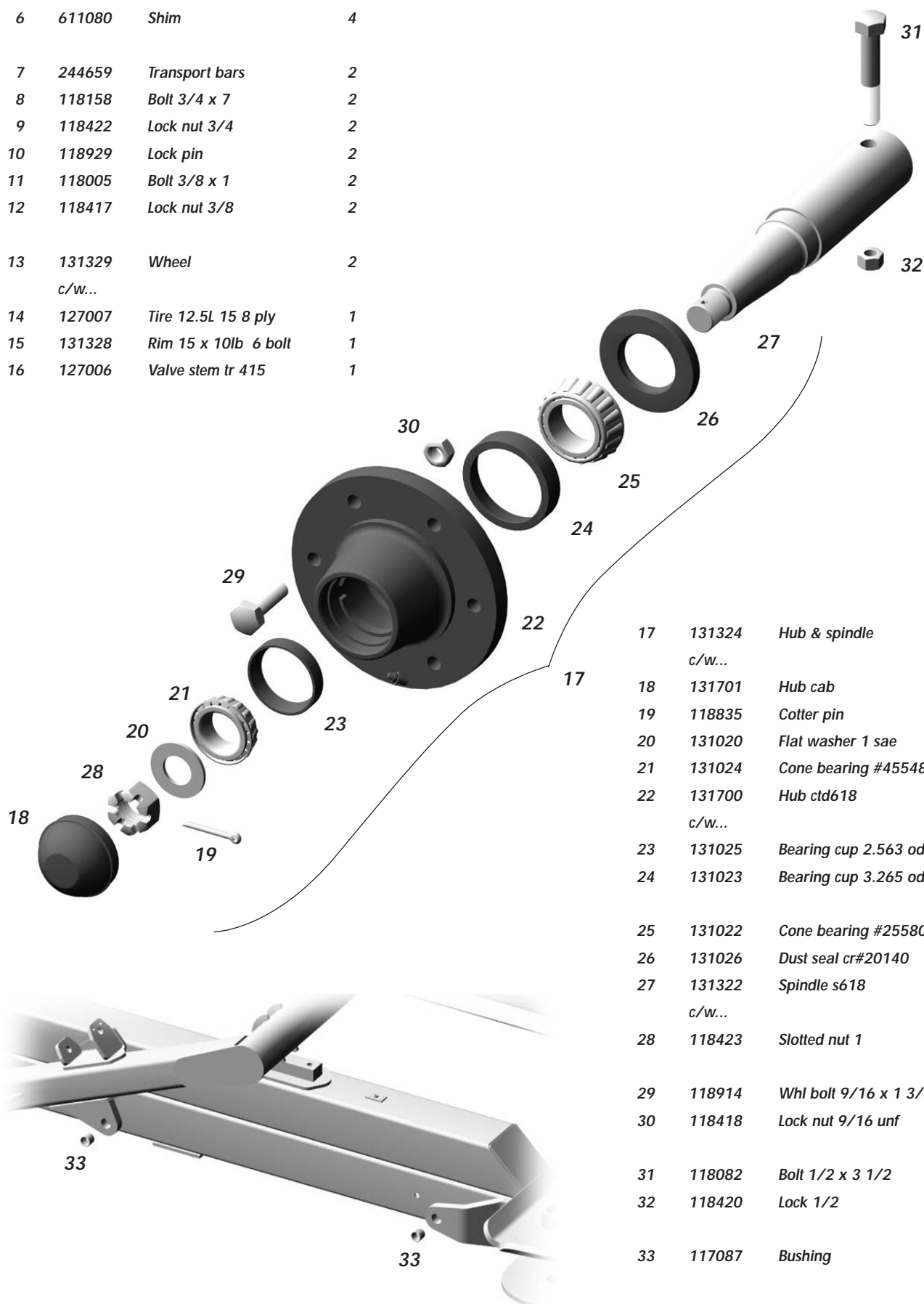
2036

143044

Rock shaft
& wheels



1	244640	Rockshaft	1
2	110015	Bearing cap	2
3	110003	Bearing base	2
4	118064	Bolt 3/4 x 6	4
5	118509	Lock washer 3/4	4
6	611080	Shim	4
7	244659	Transport bars	2
8	118158	Bolt 3/4 x 7	2
9	118422	Lock nut 3/4	2
10	118929	Lock pin	2
11	118005	Bolt 3/8 x 1	2
12	118417	Lock nut 3/8	2
13	131329	Wheel	2
	c/w...		
14	127007	Tire 12.5L 15 8 ply	1
15	131328	Rim 15 x 10lb 6 bolt	1
16	127006	Valve stem tr 415	1



17	131324	Hub & spindle	2
	c/w...		
18	131701	Hub cap	1
19	118835	Cotter pin	1
20	131020	Flat washer 1 sae	1
21	131024	Cone bearing #45548	1
22	131700	Hub ctd618	1
	c/w...		
23	131025	Bearing cup 2.563 od	1
24	131023	Bearing cup 3.265 od	1
25	131022	Cone bearing #25580	1
26	131026	Dust seal cr#20140	1
27	131322	Spindle s618	1
	c/w...		
28	118423	Slotted nut 1	1
29	118914	Whl bolt 9/16 x 1 3/4	12
30	118418	Lock nut 9/16 unf	12
31	118082	Bolt 1/2 x 3 1/2	2
32	118420	Lock 1/2	2
33	117087	Bushing	4

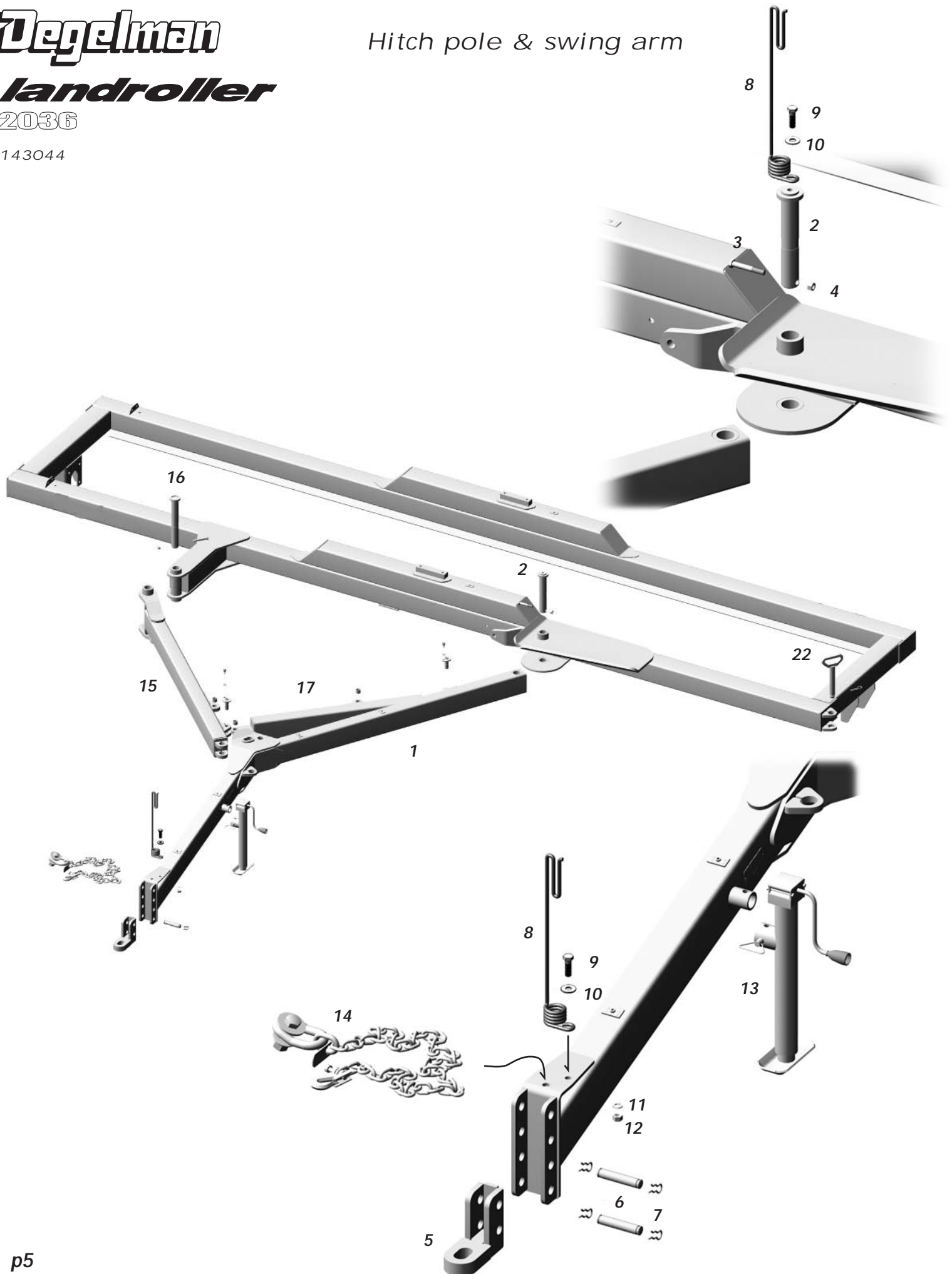
Degelman

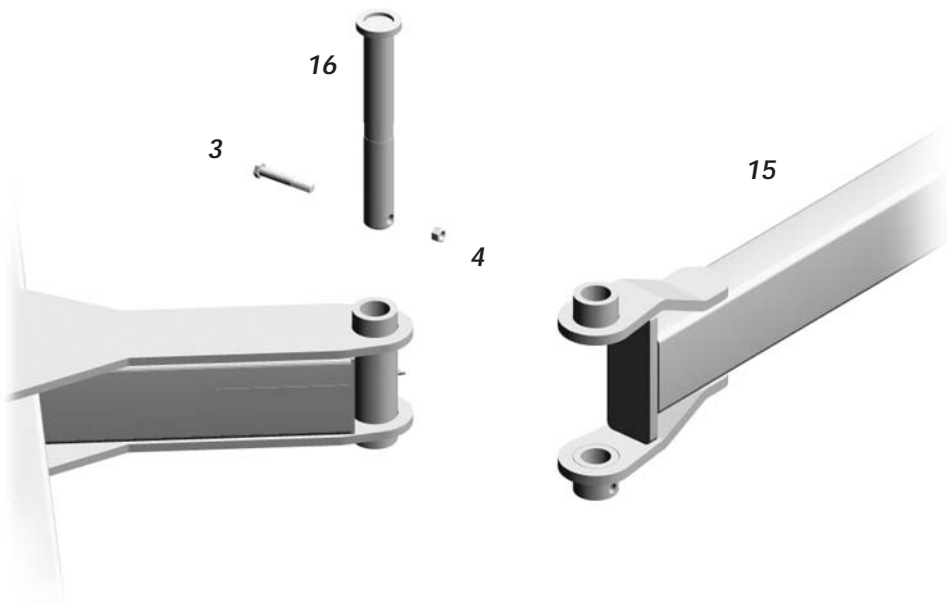
landroller

2036

143044

Hitch pole & swing arm





1	244660	Hitchpole	1
2	244655	Ramp pin 10 13/16	1
3	118094	Bolt 5/8 x 4	1
4	118447	Lock nut 5/8	1

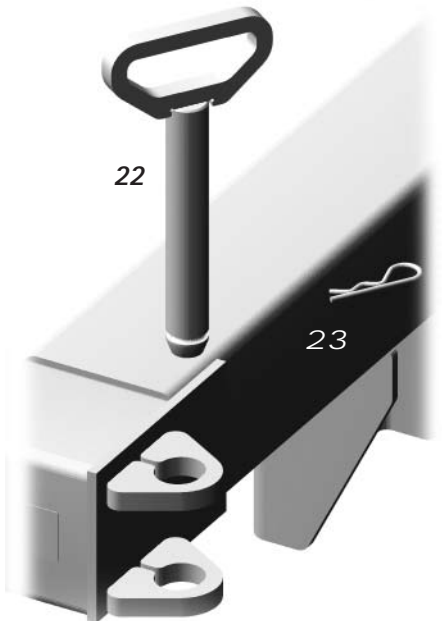
5	244678	Hitch plate	1
6	121944	Hitch pin 4 5/16	2
7	118882	Hair pin 2 3/4	4

8	143111	Flex. hose holder	2
9	118026	Bolt 5/8 x 2	2
10	118514	Flat washer 5/8	2
11	118508	Lock washer 5/8	1
12	118407	Nut 5/8	1

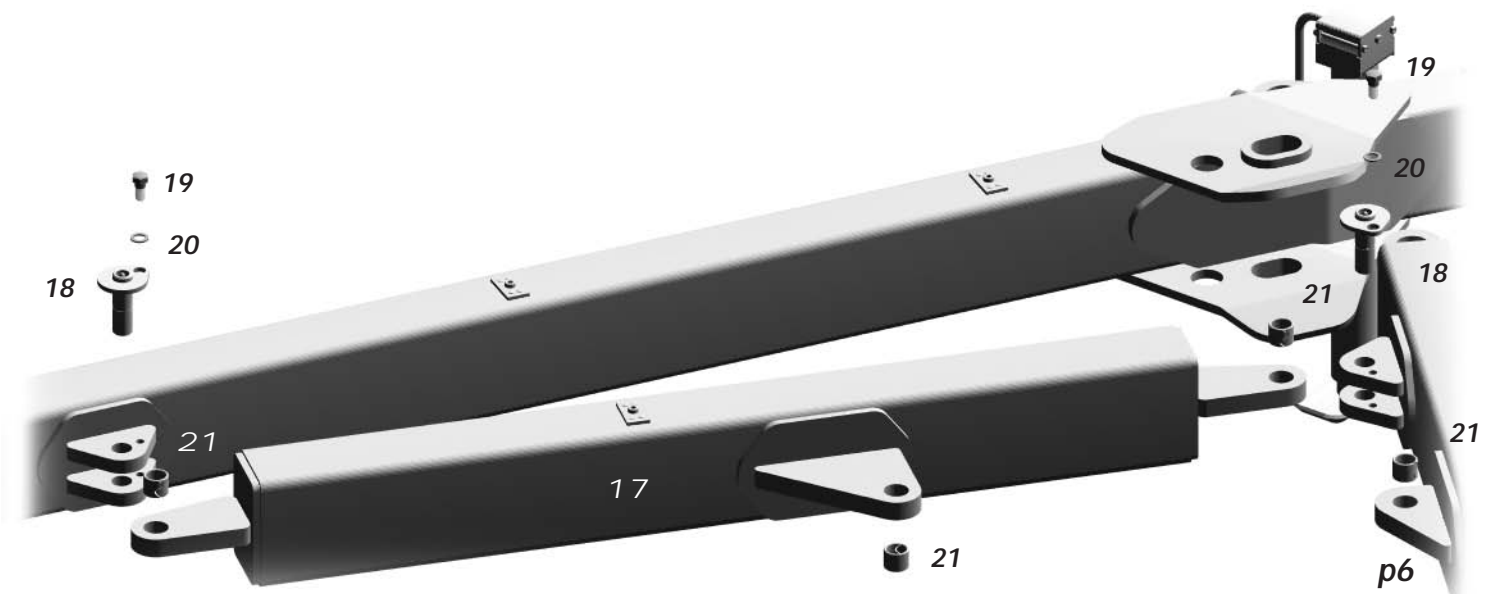
13	132030	Sidewind jack	1
14	116244	Safety chain	1

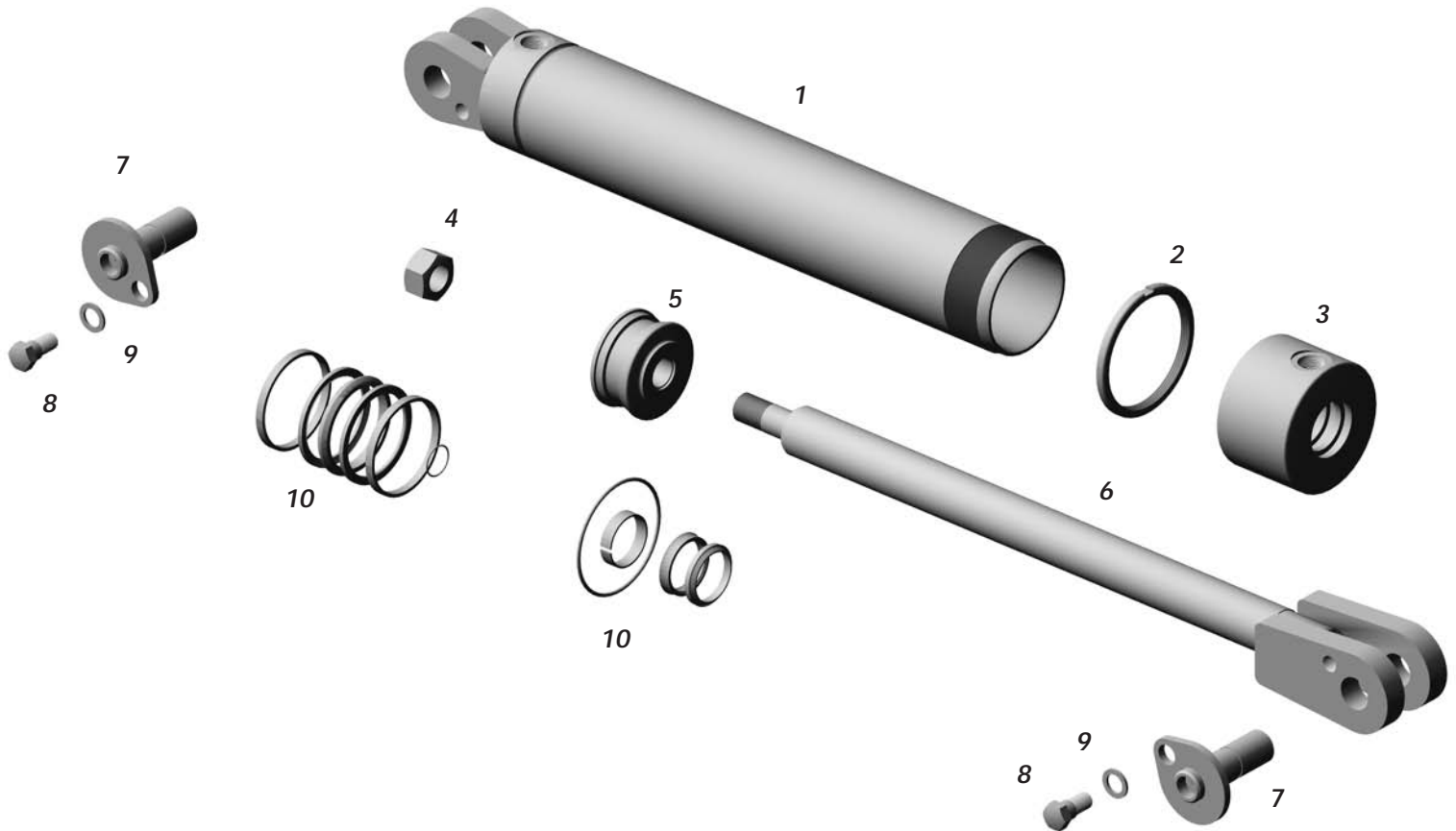
15	244680	Swing arm	1
16	243773	Cross joint pin	1

3	Bolt 5/8 x 4	1	2
4	Lock nut 5/8	1	2



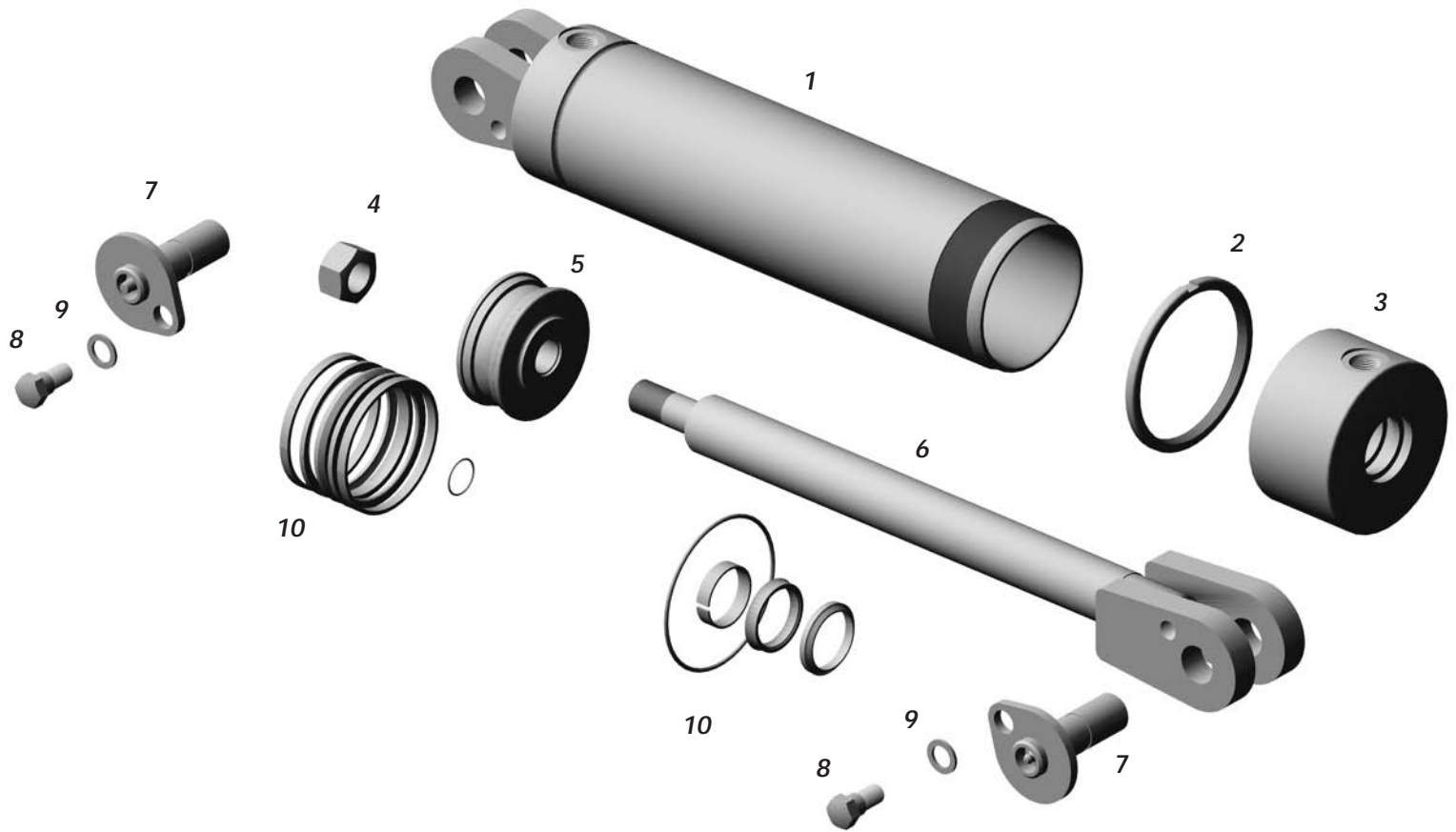
17	244690	Cross arm	1
18	118930	Held pin	2
19	118796	Shld. bolt 1/2 x 1 1/8	2
20	118924	Flat washer .591	2
21	117087	Bushing	3
22	244699	Transport pin	1
23	118817	Cotter pin 3 3/4	1





122729, 3 x 16 x 1 1/2 Wheel cylinder

1	121672	Barrel	1
2	122558	Lock ring	1
3	122556	Open cap	1
4	118441	Lock nut 7/8 UNF unitorq.	1
5	122563	Piston	1
6	122099	Rod & clevis	1
7	118930	Clevis pin	2
8	118796	Shld bolt 1/2 x 1 1/8	2
9	118924	Flat washer .591	2
10	122523	Seal kit 3 x 1 1/2	



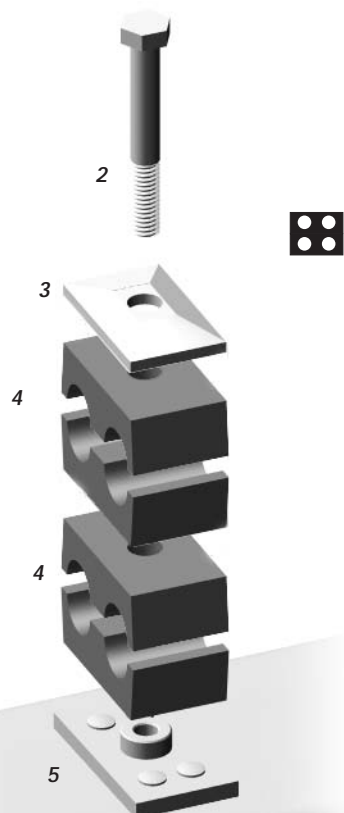
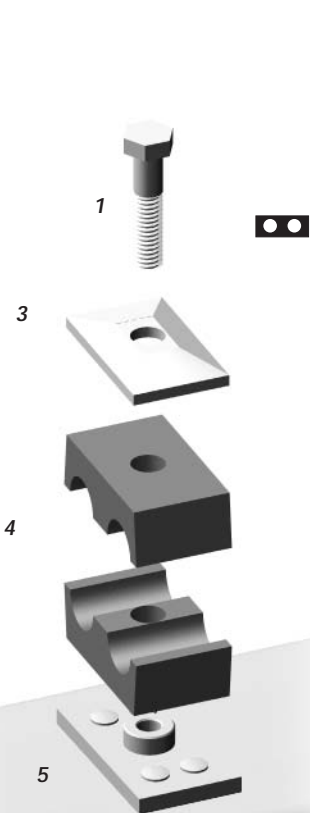
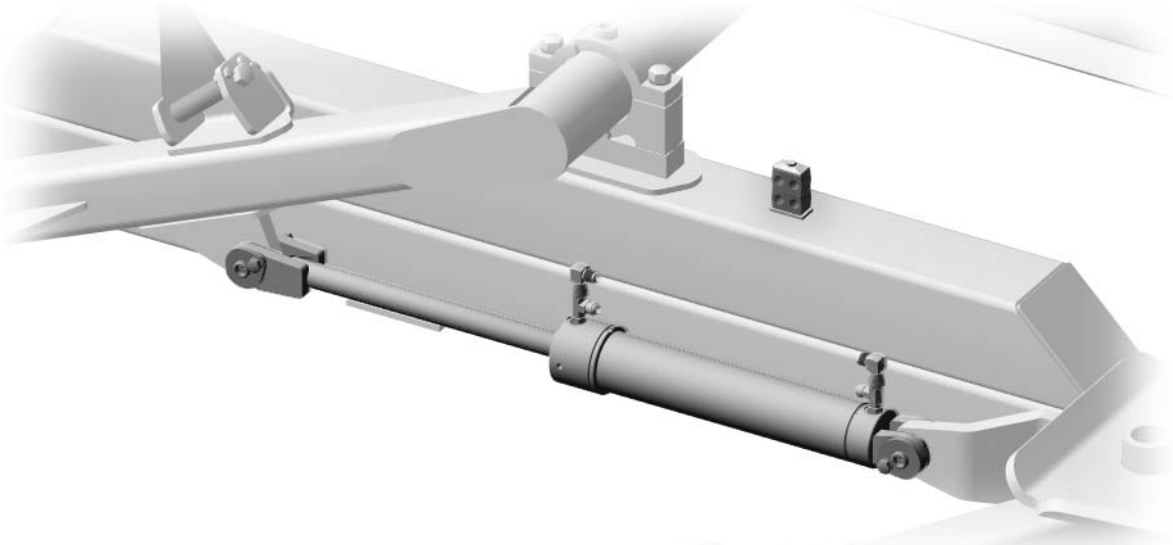
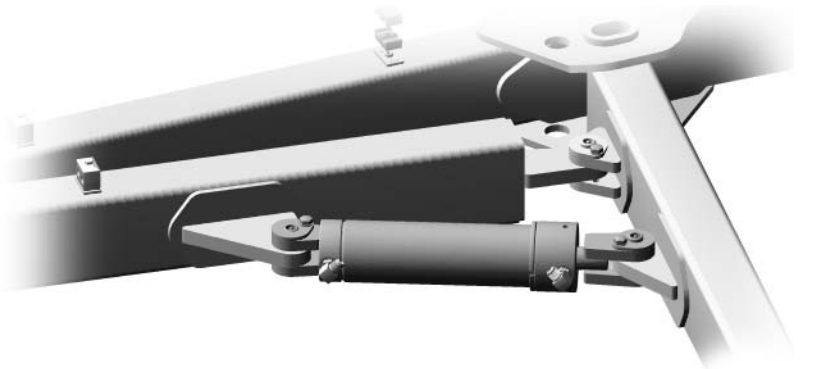
122730, 3 1/2 x 12 x 1 1/2 Swing arm cylinder

1	121478	Barrel	1
2	122658	Lock ring	1
3	122656	Open cap	1
4	118441	Lock nut 7/8 UNF unitorq.	1
5	122663	Piston	1
6	122093	Rod & clevis	1
7	118930	Clevis pin	2
8	118796	Shld bolt 1/2 x 1 1/8	2
9	118924	Flat washer .591	2
10	122522	Seal kit 3 1/2 x 1 1/2	

Degelman
landroller
2036

143044

Plumbing



- | | | | |
|---|--------|--------------------------|----|
| 1 | 118144 | Bolt 5/16 x 1 1/2 | 4 |
| 2 | 118945 | Bolt 5/16 x 2 3/4 | 5 |
| 3 | 780279 | Hose clamp top plate | 9 |
| 4 | 780278 | Hose clamp two halves | 14 |
| 5 | 780277 | Bottom plate replacement | |

Orifice goes on either swing arm hose



141576 Quick coupler

4



141000 Orifice 1/2NPT m x f swivel

1



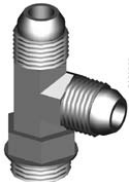
141514 Connector 1/2 m NPT x 3/4 JIC

4



141518 EL 3/4 JIC m x f swivel

2



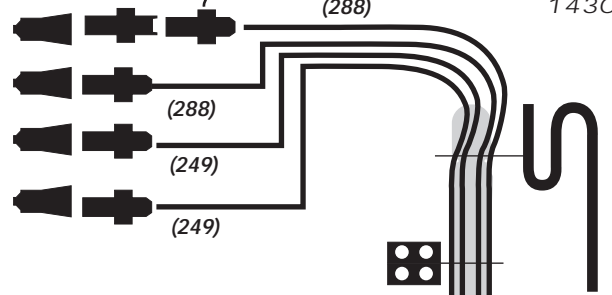
141527 TEE 3/4 m JIC x ORB x JIC

2



141504 EL 3/4m JIC x ORB

4



(288) & (288)
continued

(249) & (249)
continued

Flexible hose holder

3/8 hose JIC swivel female (length inches)

126516	(106)	2
126506	(249)	2
126620	(288)	2

(106)

(106)

Degeleman

landroller

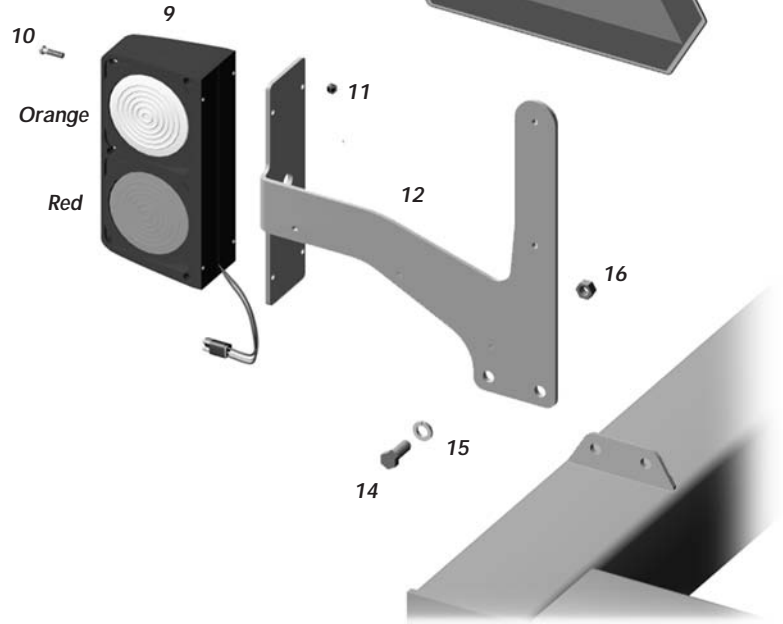
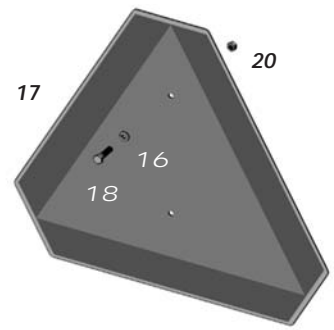
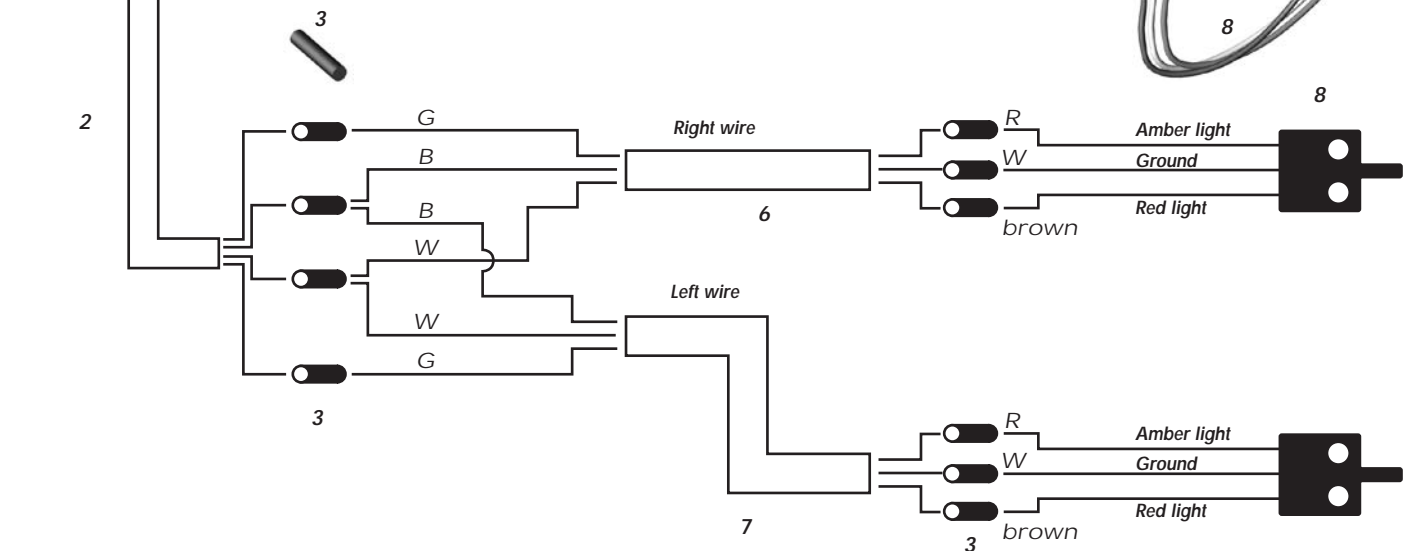
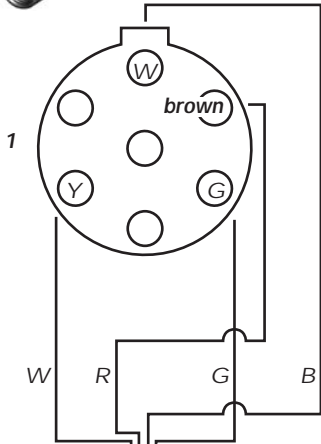
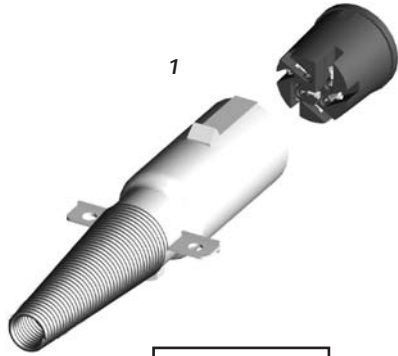
2036

143044

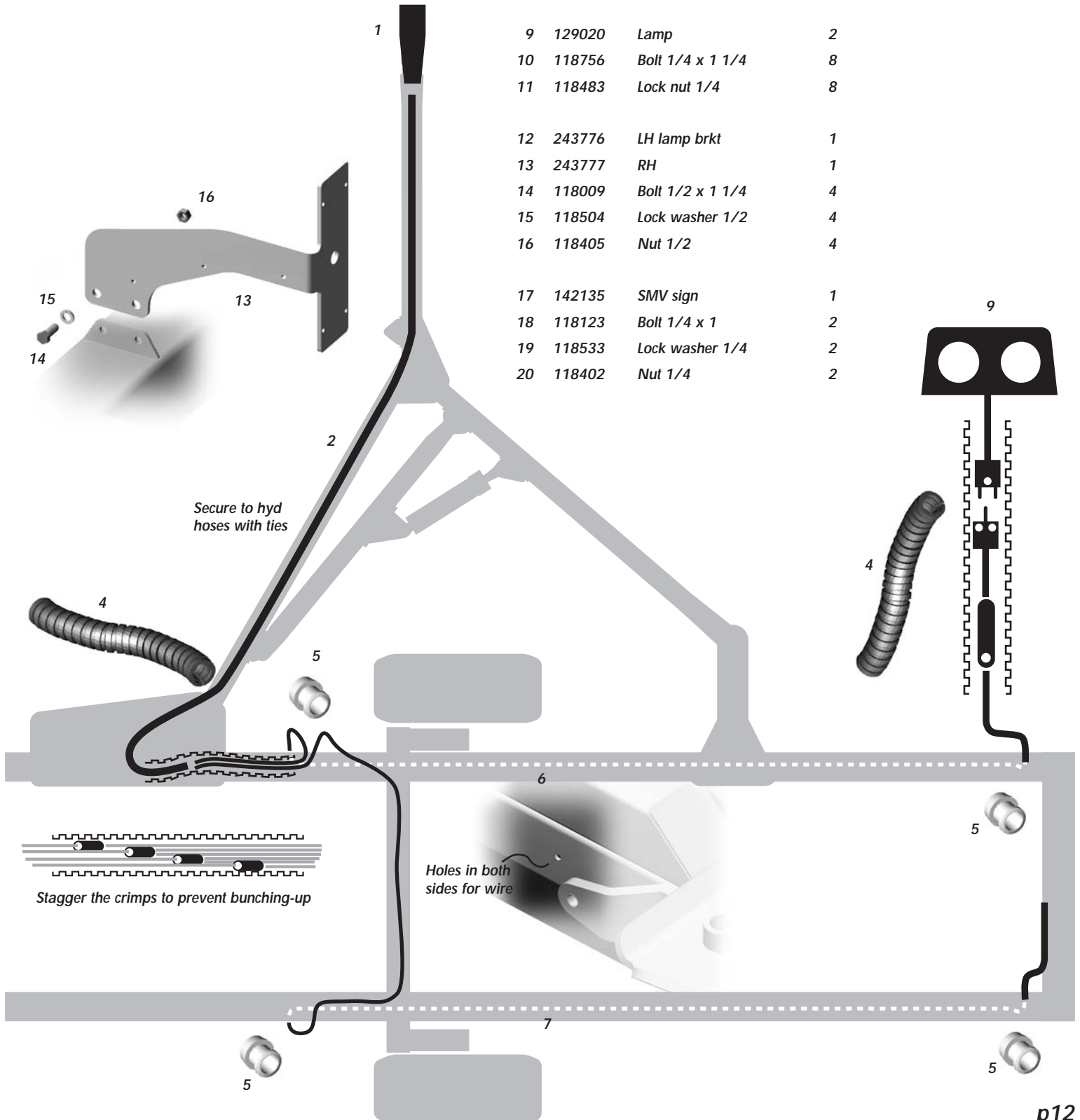
Safety lights

Make sure:

- Blank faces forward
- Orange on top
- Red on bottom



1	129027	Seven pole plug	1
2	244673	16/4 Super Vu wire 20'	1
3	129043	Butt splice 16 ga. crimp	10
4	246163	Split loom 3/8 x 24	3
5	244511	Grommet 3/8 ID x 1/4w	4
6	244674	16/3 Super Vu wire 16'	1
7	244675	16/3 Super Vu wire 24'	1
8	129022	Triplug	2
9	129020	Lamp	2
10	118756	Bolt 1/4 x 1 1/4	8
11	118483	Lock nut 1/4	8
12	243776	LH lamp brkt	1
13	243777	RH	1
14	118009	Bolt 1/2 x 1 1/4	4
15	118504	Lock washer 1/2	4
16	118405	Nut 1/2	4
17	142135	SMV sign	1
18	118123	Bolt 1/4 x 1	2
19	118533	Lock washer 1/4	2
20	118402	Nut 1/4	2



Degelman **landroller** 2036

143044



DANGER

Clear all people away
from pivoting drum area

Transport to field

Transport pin



A Put tractor's park brake on.

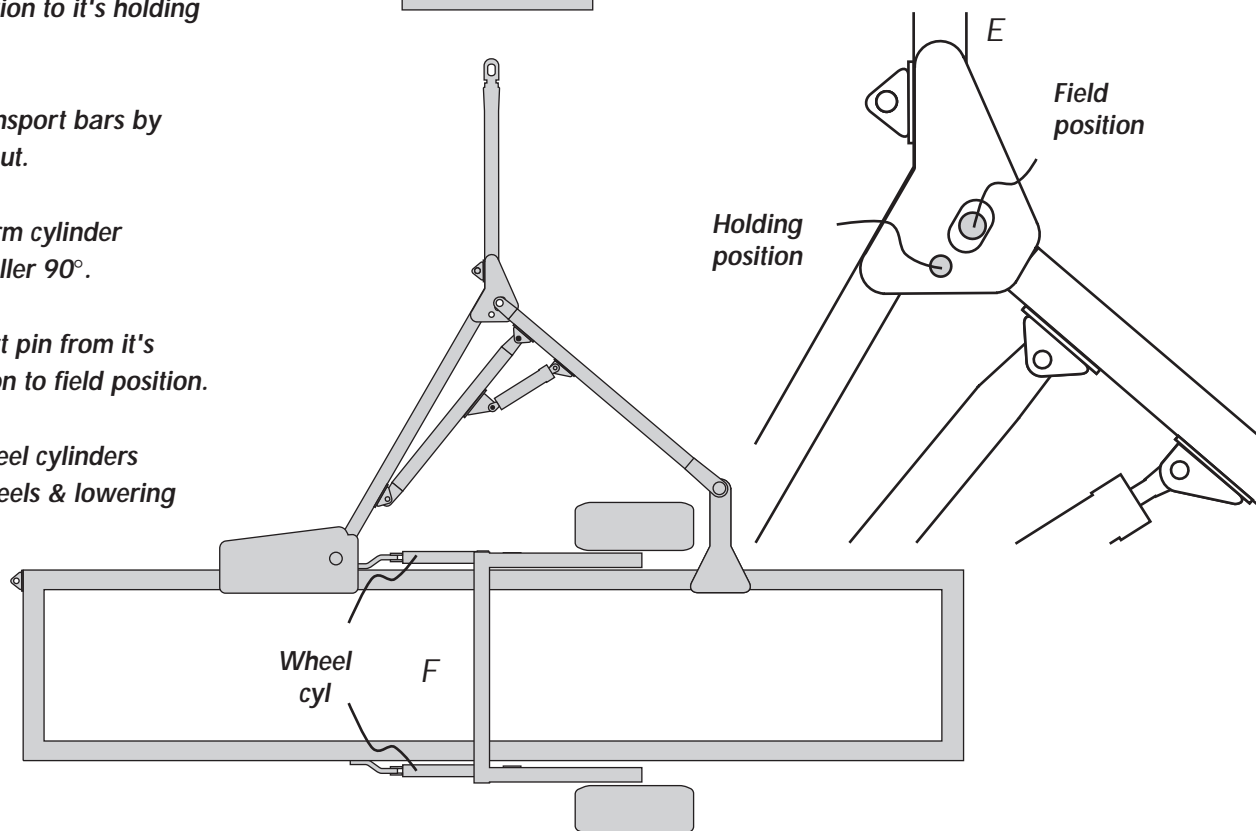
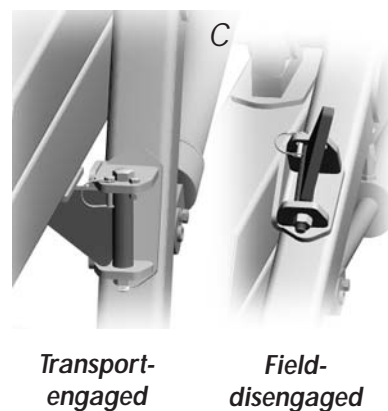
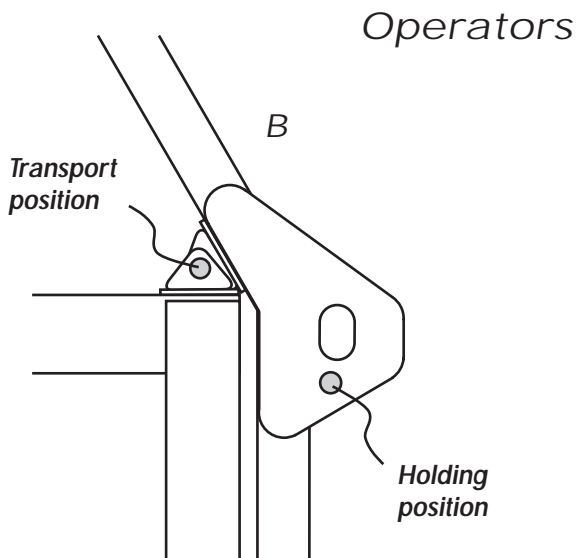
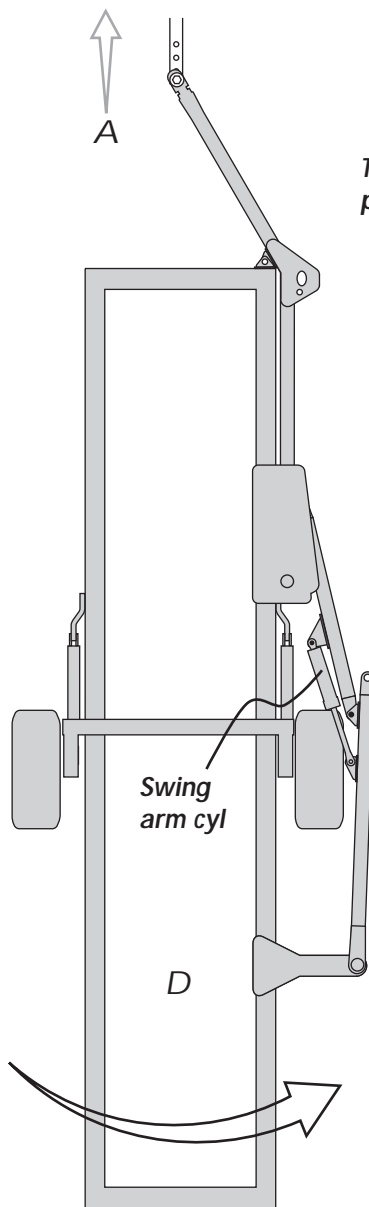
B Move transport pin from transport position to it's holding position.

C Disengage transport bars by turning them out.

D Close swing arm cylinder pivoting the roller 90°.

E Move transport pin from it's holding position to field position.

F Extend the wheel cylinders raising the wheels & lowering the roller.

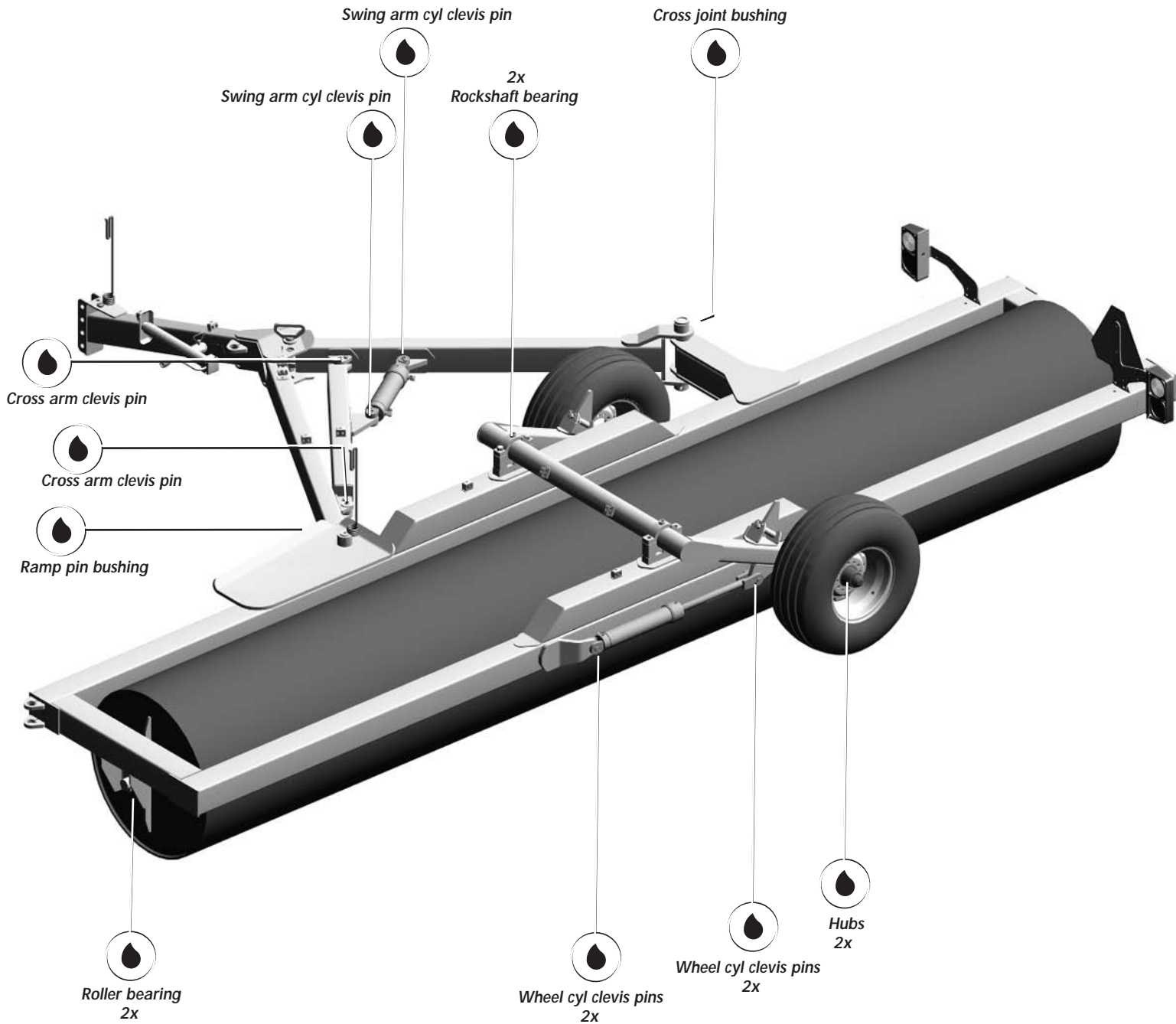


Grease fitting 118336



Lubrication

Lube all points and mechanisms after every 8 hr of use. 





You are responsible for your own safety. If you don't know basic agriculture & industrial safety, find out.

Owners of equipment must by law give operating instructions to other operators such as family members or a hired hand.

Making any design changes to equipment could cause a hazard and damage your machine.

Wear proper safety equipment. Have handy first aid kit & fire extinguisher.

Before working on machine:

- ✓ Turn tractor off
- ✓ Set controls in neutral
- ✓ Remove ignition key
- ✓ Clean all reflectors and lights.

- ✓ Keep all parts clean
- ✓ Replace worn or damaged parts
- ✓ Don't try any makeshift repairs
- ✓ Before operating check that everything is tight and not broken

HYDRAULICS

Wear gloves and eye protection when searching for leaks. Use a piece of wood or cardboard but not your hand. High pressure oil will penetrate your skin. If that happens you risk serious injury.

Safety

KILLED, INJURED
or SAFE?
YOUR CHOICE

DANGER

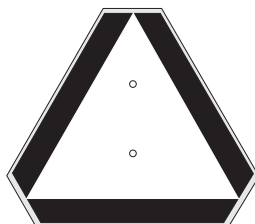
Clear all people
away from
pivoting drum
area



TRANSPORTING



- ✓ Use Safety Lights
- ✓ When in transport position make sure transport pin is in place & transport bars are engaged
- ✓ Clean SMV sign and reflectors
- ✓ Use safety chain
- ✓ Adjust hitch height so that frame is level front to back



TIRE
PRESSURE: 32 psi

START UP AND ONGOING CHECK LIST:

- ✓ Grease all fittings
- ✓ Check all bolt tightness
- ✓ Repeat after a days use and check for hydraulic leaks
- ✓ Retorque bolts
- ✓ Adjust hitch height; Set trailer so it is parallel to ground
- ✓ Use a drawbar pin with mechanical retainer
- ✓ Check tire pressure
- ✓ Oil level in tractor's hydraulic reservoir
Inspect lines, hoses, fitting & couplers.
Wipe couplers with clean cloth

10 HRS

Hyd. fluid leaks

Damaged hoses

Tire pressure

25HRS



Lube points indicated

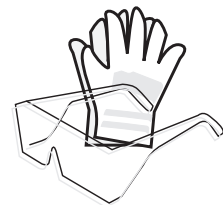
50 HRS

Working points & pins

Safety signs clean

ANNUAL

- Bolt tightness
- Wheel bearings
- Latch mechanism
- Plastic wear pad in frame's top ramp plate



TORQUE



all hardware

Hyd. fitting

Size

3/4 75 ft lb

7/8 90

TORQUE SETTINGS

Imperial Size	Grade	
	5	8
1/4	9	12
5/16	18	25
3/8	30	45
7/16	50	70
1/2	75	110
9/16	10	155
5/8	155	215
3/4	270	385
7/8	435	620
1	660	930

Metric Size	SAE	
	8.8	10.9
3	0.4	1.3
4	2.2	3.3
5	4	7
6	7	11
8	18	26
10	37	52
12	66	92
15	66	228
20	321	450
24	553	774

All hardware;
Hex head, Plated ,
Gr.5 UNC (imperial)
or P10.9 (metric)

Hoses;
3/8, ends 3/4 JIC
female swivel

Unless stated otherwise



Metric thread specs

M	Thread pitch
14	2
16	2
20	2.5
22	2.5
24	3
27	3
30	3.5



WARRANTY

Degelman Industries warrants this product to the original owner for a period of one (1) year parts and labour and two (2) years parts from the date of purchase. All matters related to the warranty of our products must be handled through the authorized selling dealer.

Warranty does not cover normal wear of the machine components or damages caused by lack of maintenance or misuse, and is subject to the following provisions.

REPLACEMENT PARTS:

Will be warranted for a period of ninety (90) days.

WARRANTY ON MACHINES USED FOR CUSTOM WORK, RENTALS OR INDUSTRIAL USE:

Will be warranted as stated above, with the exception that it will be for a period of ninety (90) days only.

TIRES:

Will be adjusted for warranty by tire manufacturer.

LABOUR:

Any labour subject to warranty must be authorized by a Degelman representative before work is started. Warranty labour allowance and rates will be handled according to established warranty service policy.

GOVERNMENT LEGISLATION:

Warranty terms and conditions are subject to Provincial or State legislation.

MODIFICATIONS:

Warranty will be void if any component is altered or modified, unless written authorization is granted by Degelman Industries Limited.

WARRANTY ON ATTACHED EQUIPMENT:

No responsibility will be assumed for whatever damages may occur to persons, tractors or property.

