

Degelman

PRO-TILL

HIGH SPEED - HIGH PERFORMANCE TILLAGE





WET OR DRY. SPRING OR FALL. WORK IN THE MOST CHALLENGING

High Performance Tillage

This is Pro-Till by Degelman. The fastest and most versatile piece of tillage equipment you will ever own, Pro-Till shreds heavy fall residue, opens up spring fields, levels ruts, destroys clods and produces an absolutely perfect seed bed. Pro-Till is High Speed, High Performance Tillage.

Engineered Tough

At Degelman, we are passionate about getting it right. We know that farm tools with the least amount of moving parts last longer, and this is why simplicity is at the heart of the Pro-Till design. Our reputation is built on developing strong, reliable, generational equipment that will be on your farm for years to come. We believe that less is always more.

True High Speed Tillage

The Pro-Till shreds residue at speeds over 10 mph, up to three times the speed of traditional cultivators, while ensuring uniform distribution of residue to eliminate problems such as uneven and delayed emergence, hair pinning, erosion and seeder/planter plugging.



CONDITIONS.



Level Ruts, Clean up Cattails and Sloughs

Pro-Till is your single spring and fall solution to tillage needs. Pro-Till is ideal for fixing headlands, leveling and filling ruts and tracks in the spring or fall and cleaning up cattails and sloughs. Today's heavy tractors, trucks, sprayers, grain carts and center-fill planters can produce deep, compacted ruts that restrict root growing space, inhibiting yields and potentially damaging expensive equipment.

The Degelman Pro-Till high performance disc has just the right amount of dirt carrying capacity to level almost any field. One or two additional cross-direction passes may be required to completely level and fill the most severe ruts.



Break Pasture and Grassland

The Degelman Pro-Till is a versatile tool to add to your farming operation. In addition to managing your residue and cleaning up your fields, The Pro-Till offers the ability to turn pastures or grassland into farmable land in as few as 2-3 passes, depending on any prior work, including burning or breaking. By reducing the amount of different tools needed to convert your pasture into profitable farmland, the Degelman Pro-Till saves you time and money.





Residue Management

Yields can be hampered by tough, heavy residue from crops like peas, sunflowers, barley, wheat, soybeans, cotton and BT corn. This is no longer a problem. Pro-Till is ideally pulled fast - 10 to 14 mph fast. Our proven combination of independent disc arms, with small diameter shallow discs, motion-dampening rubber

suspension, sturdy frame and cutting-edge furrow rollers allow this tillage tool to slice through residue as never seen before. Pro-Till will cut, weed, throw and mix soils at incredible speeds and usually in one pass. This is a true residue-killing machine.



Prepare Your Seedbed Quickly

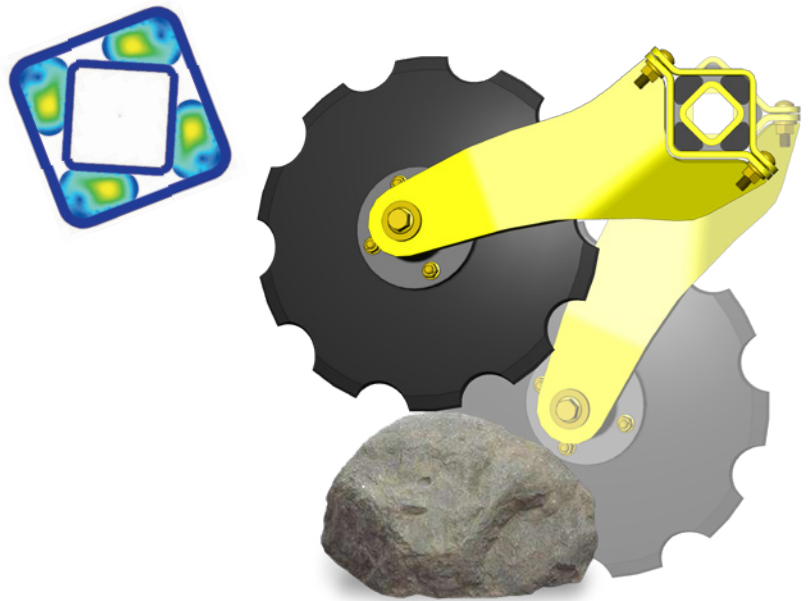
Pro-Till's cultivation design creates a superior field finish in one pass by combining an aggressive till action with an exclusive furrow roller system. The shallow, high speed discs cut and mix residue to ensure a healthy soil structure. The ridge shape of the rollers crushes, clods and creates a corrugated soil profile and an ideal seedbed.



The Pro-Till has the unique ability to cultivate and warm the soil during cold wet conditions when all other forms of tillage plug and fail. In as little as one day and after one pass, frigid heavy residue soil is cut, turned, mixed, firmed and ready for seeding. Pro-Till in the spring can mean the difference between success and failure.

Rubber Suspension System Offers Flawless Rock Protection

Degelman knows a thing or two about rocks. Conditions aren't always perfect. That's why the Pro-Till disc system replaces the traditional gang with independent disc arms that slice and mix soil at speeds never before achieved. When a stone is encountered, the rubber elements roll and compress, automatically dampening the impact and providing protection, while immediately springing the disc back into operation.



Maximum Trash Flow

Pro-Till discs have a shallow face to eliminate compaction layers, and the high-tensile strength steel arms provide maximum flow through with three times the spring back of normal mild steel.

Pro-Till's high-speed, aggressive tillage, combined with more room between the discs, maximizes trash flow and eliminates plugging.



Weight is Inherent in the Overbuilt Frame

Other machines require extra weight stacks, but the Pro-Till carries its weight in the frame - where it should be. As the heavyweight in the industry, with an average per-foot weight of nearly 1,000 lbs, the Pro-Till has the downward force to handle the most extreme soil and trash conditions.



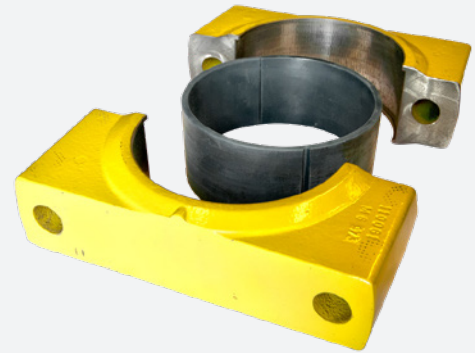
Maintenance-Free Depth Control

Adjusting the front and rear cutting depth on Pro-Till is easy and accurate. Mechanical plates swivel in or out to adjust cutting depth in 1/2 inch intervals, making this a simple, organized and reliable system.



Maintenance-Free Rock Shaft Bushings

These Devol composite bushings are maintenance-free and greaseless. They are shock, abrasion and wear resistant. The bushings are very low friction making them durable and hard wearing. They will not corrode.



Simplified. Organized. Ergonomic.

From start to finish, Pro-Till was designed with a user experience in mind. Our Kennfixx knurled grip couplers are hassle free, ergonomic and color coordinated to easily identify which hydraulics are routed to which action on the Pro-Till. When not in use, the hydraulic hoses are tucked away neatly in each of their own color coded slots. The user manual is easily accessible and safe from damage.



Oversized Hydraulic Jack

Pro-Till's hydraulic jack with oversized leveling pad is centered on the machine for perfect balance and stability on any ground surface. With its large range of motion, the jack is easily controlled by one operator for any vehicle height.





ROLL FORWARD & SELF CONTOURING FRAME

A unique benefit of the Pro-Till is the patented roll forward frame design which gives operators the ability to completely rotate the frame and rear disc sections off the ground, making it easy to maneuver out of trouble in wet conditions. This design, together with the impressive weight distributions of the oversized high-flotation tires, lets the operator back up, drive forward, unplug, or simply drive away from any difficulty.

Degelman's self-contour frame allows Pro-Till to follow the curvature of varying terrains while maintaining a consistent depth. The independent wing sections and a shallow floating frame give Pro-Till the flexibility to handle steep inclines or downward slopes. This floating, self-contouring design, coupled with Pro-Till's independent discs, help produce a flawless, uniform field.



Double V

The Double V Notch blade does the job of slicing & penetrating in hard soils, cutting straw and residue, providing traction to keep the blades rotating, and helps keep the machine anchored and stable as it's pulled through the soil. The result is a smoother furrow bottom compared to the more conventional U notch blade.

A patented heat-treating process results in a "transitional" hardness profile where the inner section is less hard (for ductility), and the outer wear area is at maximum hardness, resulting in the Double V Notch blades lasting longer by 20% or more compared to competitors' blades.

They are produced from high-quality boron / medium-carbon steel, along with other properties which help maintain toughness at the higher hardness level of the finished product.

3 Zones of Hardness

- Increased Flexibility
- Increased Durability
- Maximum Wear

Smooth

The concave disc does an excellent job of tilling and inverting the soil. The action of the disc depends on the speed. The biggest advantage this disc offers is durability and longevity.

Notched

Notched concave discs provide a very aggressive cutting edge that is well suited for soil penetration. These discs are a good choice for residue management.

MAINTENANCE-FREE, LONG LIFE DISC BEARINGS

Real world conditions can be harsh. Our unique Pro-Till bearings withstand constant vibration, high shock and severe loads. These long-life, double-row angular contact ball bearings are designed to provide years of reliable operation in every kind of soil condition; from cold and wet, to dry and dusty. Best of all, because they never require greasing, these bearings are maintenance-free. After extensive use, the bearing housing itself can be changed out quickly and easily with one bolt.

Preventing contamination is the key to any long life bearings. Several features are built into the Pro-Till bearing design to prevent dry running and keep them free from dirt, dust, and moisture:

- The bearings hub is double sealed on both sides
- The machine housing has an anti-corrosion coating
- The seal lips are permanently lubricated
- High-performance, triple-lipped cassette seal



Exclusive Furrow Rollers

Pro-Till's exclusive Otico rollers are an excellent all-around packer with a unique corrugated ridge profile, which leaves a field finish designed to manage moisture and prevent soil erosion. Pro-Till's furrow rollers outperform any typical cage roller, regardless of soil type or soil conditions. Proven effective in clay, sand, gumbo, and rocky soil, the furrow roller performs especially well in wet fields. Unlike a cage roller, the furrow roller is designed to shed soil to prevent plugging and reduce maintenance.

Semi-Pneumatic Technology

A special semi-pneumatic technology is integrated into the Pro-Till rollers making them work well in rocky soils and more resistant to wet conditions. Designed by OTICO of France, these exclusive rubber rollers are formulated from special rubber compounds. Uniquely molded over a high-strength steel core, they are also hollow, giving them the ability to flex each turn, partly absorb shock from stones and hard conditions, and also help shed mud with every revolution.



Maintenance-Free Roller Bearings

Proven through years of research, development and rigorous testing in both lab and field, the advanced sealing technology ensures optimal performance for the customer. TILLXTREME™ offers a one-of-a-kind, exclusive high-performance solution designed to eliminate the need for re-lubrication, saving precious hours needed for field work. PEER's patented seal design provides significantly improved contamination exclusion than the conventional triple-lip seal design. PEER's TILLXTREME™ engineered assemblies are more reliable, maintenance-free, and make installation easy. As an environmentally friendly solution, there is no grease purge to contaminate the soil.

Why Furrow Rollers?

These rollers are an excellent all-around roller suitable for all types of soil conditions and offer very good consolidation. The micro-ridge shape of the Pro-Till rollers allow water to be stored in the corrugated valleys, driven to lower soil layers and stored in a uniform way. Proper soil consolidation is critical to allow water stored in deep soil layers to flow.

Faster Germination

Corrugated rollers help seeds germinate and grow in the shortest possible time by creating a firm field finish. The compact soil improves the soil to seed/root contact which enables an efficient transfer of nutrients. It also preserves moisture, which is especially important during dry years.

Enriched Soil Structure

After residue has been cut and mixed, our exclusive corrugated rollers finish the field to perfection. The hollow corrugated rubber design sheds soil, breaks up the larger clods and consolidates the soil to bring fine earth in contact with residue to optimize decomposition.

Effective Erosion Control

The Pro-Till rollers are key to protecting soil against heavy rainfalls and high winds. The rollers consolidate the soil, providing valleys for water storage and creating ridges to reduce wind and water erosion.

Improved Gas Exchange

Healthy soil must be allowed to breathe. Pro-Till's furrow rollers create a pattern of ridges that optimize gas exchange by forming a highly compacted zone next to a less compacted zone. These zones allow a rapid exchange of carbon dioxide and oxygen between the soil pores.

Simple, Strong and Clean Scraper System

Utilizing a minimalist approach, the long arms of the scrapers create great trash flow. The scrapers are easy to adjust, easy to clean and are removed with the loosening of a bolt. Max Life scrapers will significantly increase the life and performance of your roller scrapers. The tungsten carbide tipped scrapers maintain their original length and shape, resulting in a clean roller and a more consistent field finish.

Max Life Scrapers

With up to 10 times longer wear than standard scrapers, Max Life scrapers take advantage of new hard surfacing technology. Tungsten carbide is mixed directly into the molten weld bead. Tungsten carbide is an extremely hard, metal matrix composite material that easily withstands the abrasive effect of running in soil.

During the break-in period, the leading edge of steel is worn off to match the attack angle of the blade. The tungsten carbide is then the primary point of contact.





TRUE GREASELESS TECHNOLOGY

Put away the grease gun. We know the window for spring and fall work is quick and unforgiving. Give yourself the upper hand with Degelman's game changing True Greaseless Technology.

Farming operations are becoming bigger and more complicated every day. We know time is money, and that today's growers have more to worry about than greasing their equipment. We have invested time and money, and are committed to bringing True Greaseless technology to all products we develop. Any product name with the TGT marking on it, features our industry leading True Greaseless Technology.

Pin Eye cylinders

The welded pin eye cylinder series is designed to withstand the most demanding applications on the market today. Lion's extensive design experience has resulted in a premium rephasing cylinder with the latest in sealing and rephasing technology and standard Lion1000 induction hardened rods for the ultimate in corrosion protection and durability.



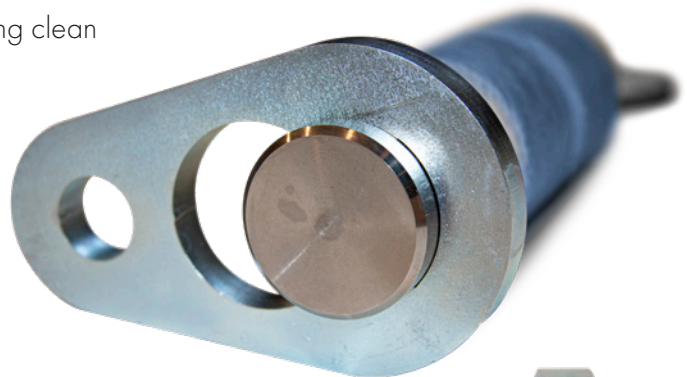
Exclusive Self-Lubricated, Zero-Maintenance Bushings

No metal on metal contact with our state of the art bushings. These bushings, manufactured from a friction liner applied on a glass fiber structure, have excellent friction properties and improved wear resistance without external lubrication even on high loads.



Bushing Seal

The wiper edge removes even the toughest dirt and contaminants from the pin, keeping the system running clean and at its peak performance. The metal enclosure ensures a secure fit in the open housing, preventing expulsion of the wiper even under extreme conditions.



Oversized Electroless Plated Nickel Pin

At 2" - 2.5" in diameter, these high tensile steel pins are 60% larger than any other pin on the market. With the robust weld free pin design, you don't have to worry about a weld breaking and stopping you from getting your work done.





UNSURPASSED FLOTATION

100% Wider

Degelman Pro-Till 30/33/36/40/41/45 uses BKT FL-630 Ultra-High Flotation radial tires, offering an extremely wide footprint area for maximum performance in wet soil conditions.

30% Taller

With a 30% taller tire, Degelman Pro-Till minimizes rolling resistance while reducing the impact on soil structure.

Lugged Tread Pattern

Pro-Till's BKT FL 630 tires use a non-directional, lugged tread designed to shed mud; ideal for wet conditions. These tires wear longer and save you fuel and time in the field when compared to traditional ribbed tires.

700% More Flotation - Nearly 7000 square inches

Degelman Pro-Till uses BKT FL-630 Ultra High Flotation radial tires, offering an extremely wide footprint area for maximum performance in wet soil conditions. The shape of the contact area is specially designed to minimize the impact on soil structure.



24"

Section Width: 24"
Overall Diameter: 46.1"
Static Loaded Radius: 21"

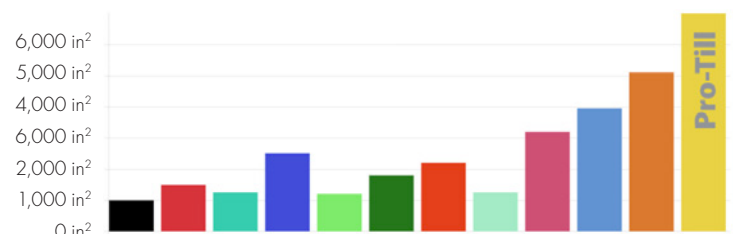


46"

Rolling Circumference: 141"
Load Capacity @25mph: 13,230 lbs

Safe and Sound

The Alliance high-volume radial flotation tire series was designed to optimize the efficiency of agriculture transportation. The 382 series includes all-steel construction and a deep, non-directional block pattern which enables high mobility in the field, as well as comfortable, high-speed transportation.







NEXT GENERATION HIGH PERFORMANCE TILLAGE

Introducing the all new Pro-Till by Degelman. Available in 4 new sizes, we've raised the bar on what you should expect out of your tillage equipment. Built heavy with a "drop the pin and go" mentality, this is next generation tillage as only Degelman can do.

Featuring a narrower transport size, True Greaseless Technology throughout the entire machine, and versatility that includes the optional Scorpion Hitch and Pro-Cast Granular applicators.

The Pro-Till High Speed, High Performance Disc gets you in the field fast, and allows you to get your work done quick and more efficient.

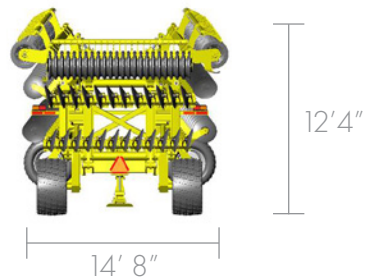
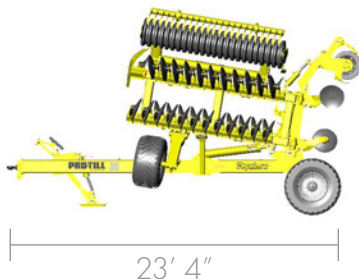




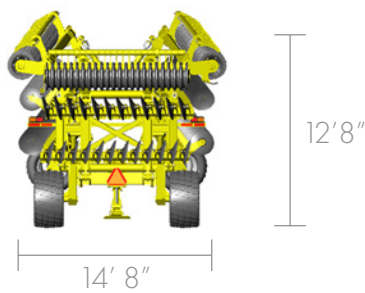
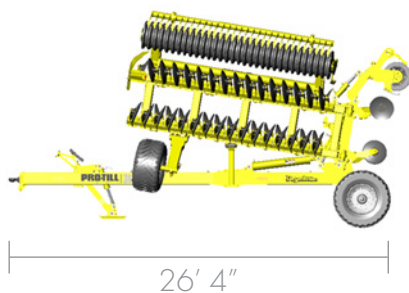
Safely Transport To & From The Field

Pro-Till is user-friendly, allowing the operator to engage the transport position from the safety of the tractor seat. The wing-forward design is incredibly compact and stable for road transport. The hitch weight is positive, creating a safe and highly maneuverable machine.

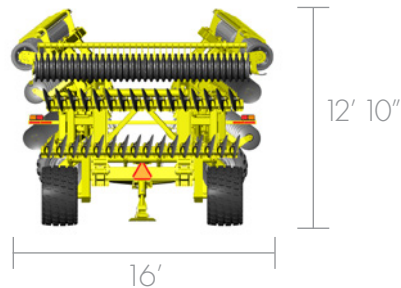
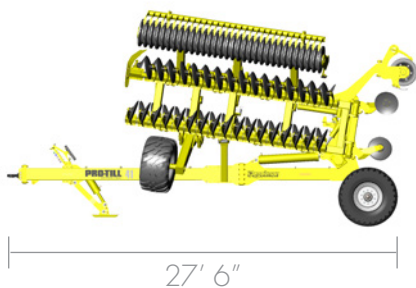
30



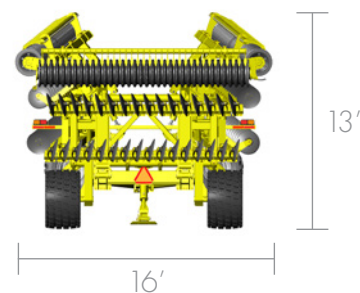
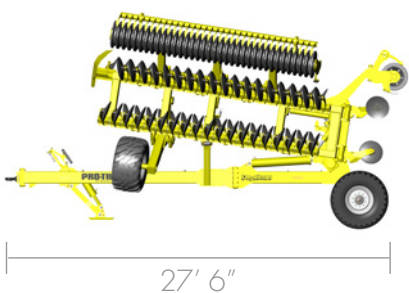
36



41



45



SPECIFICATIONS

Model	PTL30	PTL36	PTL41	PTL45
Transport Height (Low c/w Rubber Roller)	13'-0"	13'-5"	13'-6"	13'-8"
Transport Height (High c/w Rubber Roller)	13'-4"	13'-8"	14'-0"	14'-3"
Transport Height (Low c/w Cage Roller)	12'-4"	12'-8"	12'-10"	13'-0"
Transport Height (High c/w Cage Roller)	12'-10"	13'-5"	13'-8"	13'-11"
Transport Length	23'-4"	26'-4"	27'-6"	27'-6"
Field Length	28'-8"	31'-8"	33'-0"	33'-0"
Wheel Base	11'-4"	11'-2"	13'-6"	13'-6"
Transport Width (High Position)	13'-2"	13'-2"	16'-0"	16'-0"
Transport Width (Low Position)	14'-8"	14'-8"	17'-8"	17'-8"
Weight (c/w rubber roller, scraper & 20" discs)	27,500 lbs	31,500 lbs	37,800lbs	39,500lbs
Hitch Weight	7,000 lbs	9,000 lbs	10,500 lbs	11,400 lbs
Number of Discs (center)	24	24	32	32
Number of Discs (per wing)	23	31	33	37
Roller Size (center)	9'-10"	9'-10"	14'-6"	14'-6"
Roller Size (wing)	9'-10"	13'-2"	13'-2"	14'-6"
Disc Arm Mounting	Rubber Torsion - 4 Elements per Arm		Rubber Torsion - 4 Elements per Arm	
Disc Spacing	5" Overall Spacing (10" Spacing per Row)		5" Overall Spacing (10" Spacing per Row)	
Tire Size Center	600/50R22.5		750/45R22.5	
Tire Size Wing	550/45R22.5		600/50R22.5	
Transport Cylinder	6 x 40 x 2in - Pin Eye c/w composite bushings & seals		6.5 x 42 x 2.5in - Pin Eye c/w composite bushings & seals	
Wing Cylinder	4 x 28 x 2in - Pin Eye c/w composite bushings & seals		4 x 28 x 2in - Pin Eye c/w composite bushings & seals	
Wheel Depth Master Cylinder	4.25 x 8 x 2in - Pin Eye c/w composite bushings & seals		4.25 x 8 x 2in - Pin Eye c/w composite bushings & seals	
Wheel Depth Slave Cylinder	3.75 x 8 x 2in - Pin Eye c/w composite bushings & seals		3.75 x 8 x 2in - Pin Eye c/w composite bushings & seals	
Roller Depth Master Cylinder	4.25 x 8 x 2in - Pin Eye c/w composite bushings & seals		4.25 x 8 x 2in - Pin Eye c/w composite bushings & seals	
Roller Depth Slave Cylinder	3.75 x 8 x 2in - Pin Eye c/w composite bushings & seals		3.75 x 8 x 2in - Pin Eye c/w composite bushings & seals	
Hydraulic Jack Cylinder	4 x 12 x 2in - Pin Eye c/w composite bushings & seals		5.5 x 8 x 2in - Pin Eye c/w composite bushings & seals	
Working Depth	8" c/w 20" discs or 9" c/w 22" discs		7" c/w 20" discs or 8" c/w 22" discs	
Hydraulic Jack, Safety Lights, Soil Deflector	Standard		Standard	

HORSEPOWER REQUIREMENTS

- 12 to 15 hp per foot at **2" or less working depth** to achieve 8-12 mph with 20" blades (will vary by soil type)
- 15 to 20 hp per foot at **2" or more working depth** to achieve 8-12 mph with 20" blades (will vary by soil type)

Pro-Till Model

Horsepower Per Foot			
	12hp	15hp	20hp
30'	360	450	600
36'	450	550	600
41'	500	600	600+
45'	550	600+	600+



PRO-TILL 33/40 THE ORIGINAL MONSTER

With the Pro-Till 33 and 40 foot machines, Degelman Industries pioneered the trend of a "North American High Performance Disc". We took European technology and added weight where it was needed, simplicity where it made sense, and performance where it mattered, so it could withstand the acres and punishment that farmers across North America demand. There is still nothing heavier or better built on the market. The Pro-Till 33/40 is undeniably Degelman.







Safely Transport To & From The Field

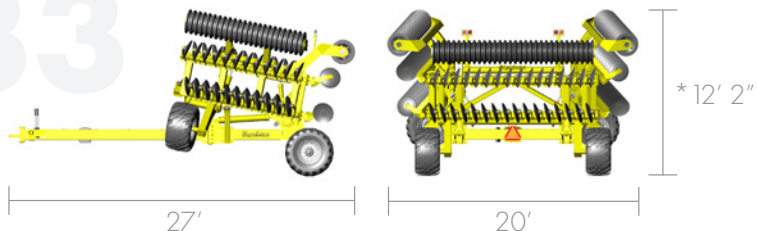
Pro-Till is user-friendly, allowing the operator to engage the transport position from the safety of the tractor seat. The wing-forward design is incredibly compact and stable for road transport. It incorporates an ultra-low profile-under 13' (3.9m) - which is ideal for clearing bridges and power lines. The hitch weight is positive, creating a safe and highly maneuverable machine.

Soil Deflector

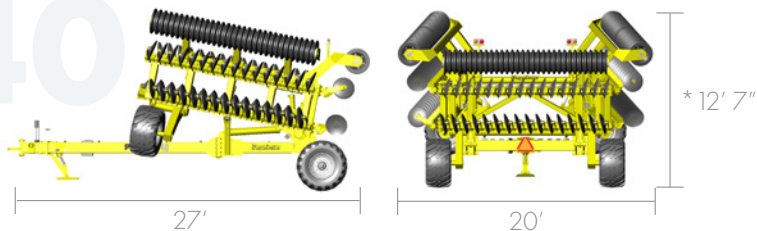
The soil deflector is a strong, simple part that redistributes soil from the front discs to the rear of the back discs to ensure no ridges or grooves are left. The depth of the deflector can be adjusted.



33



40



SPECIFICATIONS

Model	PT33	PT40
Width Available	33' (10 m)	40' (12 m)
Weight	31,140 lbs (14,130 kg)	34,560 lbs (15,680 kg)
Hitch Weight	6,310 lbs (2,862 kg)	8,500 lbs (3,855 kg)
Number of Discs (center)	32	32
Number of Discs (per-wing)	23	31
Disc Arm Mounting	Rubber Torsion - 4 Elements per Arm	Rubber Torsion - 4 Elements per Arm
Disc Spacing	5" Overall Spacing (10" Spacing per Row)	5" Overall Spacing (10" Spacing per Row)
Hitch Frame	6" x 10" x 3/8"	6" x 10" x 3/8"
Center Frame	6" x 10" x 3/8"	6" x 10" x 3/8"
Wing Frame	6" x 6" x 3/8"	6" x 6" x 3/8"
Tires (center)	Alliance 600/50R22.5 FLOTRUCK	Alliance 600/50R22.5 FLOTRUCK
Tires (wing)	BKT 600/50R22.5 FL630 Ultra	BKT 600/50R22.5 FL630 Ultra
Hubs	H1010-9 (10 Bolt)	H1010-9 (10 Bolt)
Roller Bearings	2-7/16" Ball Bearing 6 - Lip Seal	2-7/16" Ball Bearing 6 - Lip Seal
Hydraulics - Wheel/Roller	Rephasing Circuit Masters 4-1/4" x 8" x 2" Rod & Slaves 3-3/4" x 8" x 2" Rod	Rephasing Circuit Masters 4-1/4" x 8" x 2" Rod & Slaves 3-3/4" x 8" x 2" Rod
Hydraulics - Transport Lift	5-1/2" x 42" x 2-1/2" Rod	5-1/2" x 42" x 2-1/2" Rod
Hydraulics - Wing Forward	4" x 28" x 2" Rod	4" x 28" x 2" Rod
Roller Size (center)	13'-2" (4 m)	13'-2" (4 m)
Roller Size (wings)	9'-10" (3 m)	13'-2" (4 m)
Hydraulic Jack	Standard	Standard
Safety Lights	Standard	Standard
Soil Deflector	Standard	Standard

*Height measured with cage roller

HORSEPOWER REQUIREMENTS

- 12 to 15 hp per foot at **2" or less working depth** to achieve 8-12 mph with 20" blades (will vary by soil type)
- 15 to 20 hp per foot at **2" or more working depth** to achieve 8-12 mph with 20" blades (will vary by soil type)

Pro-Till Model

Horsepower Per Foot

	12hp	15hp	20hp
33'	400	500	600
40'	500	600	600+



PRO-TILL 20/26

With the Pro-Till 20/26, Degelman Industries is able to offer the same high-speed, high-performance discs as our three-plex machines in a size that fits the 300 – 450 HP range, all without sacrificing our frame size, or the average weight per foot. In addition, we made the 20/26 Ft Pro-Till our first ever, completely greaseless, maintenance-free machine. It's true "drop the pin and go" mentality.



Optional Increased Depth Arms

The Pro-Till 20/26 comes with optional HD arms to accommodate 24" and 26" discs. This allows for consistent increased depth in the field and extreme soil movement. Designed with potato and vegetable growers in mind, the Pro-Till with HD arms adds another level of versatility to our high performance discs.



Swing Away Deflector

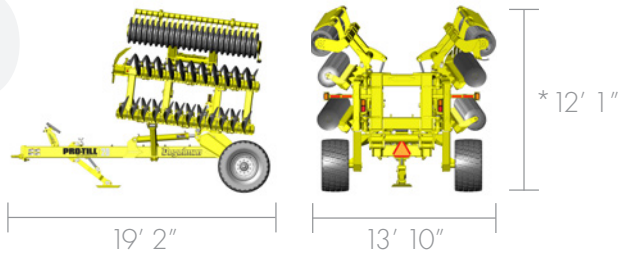
The swing away deflector is a strong, simple part that redistributes soil from the front discs to the rear of the back discs to ensure no ridges or grooves are left. The depth of the deflector can be adjusted. The teeth vibrate to allow fine soil to sift through without sticking. The deflector can be rotated 180 degrees when not in use.

Gauge Wheels

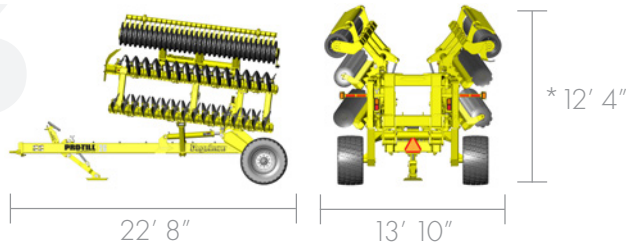
Now standard on all 20 and 26 foot machines, you have a choice of either mechanical or hydraulically adjustable gauge wheels. These end wheels provide additional flotation in the field, especially in softer field conditions, and help provide a level and consistent field finish. Gauge wheels are retro-fittable with all previous bi-fold Pro-Till models and feature a high-quality Alliance 400/60-15.5 tire.



20



26



Safely Transport To & From The Field

Pro-Till is user-friendly, allowing the operator to engage the transport position from the safety of the tractor seat. The wing-forward design is incredibly compact and stable for road transport. It incorporates an ultra-low profile-under 13' (3.9m) - which is ideal for clearing bridges and power lines. The hitch weight is positive, creating a safe and highly maneuverable machine.

SPECIFICATIONS

Model	PT20	PT26
Width Available	20' (6 m)	26' (8 m)
Weight (including gauge wheels)	20,080 lbs (9,110 kg)	23,480 lbs (10,650 kg)
Hitch Weight	5,200 lbs (2,360 kg)	6,510 lbs (2,952 kg)
Number of Discs(per-wing)	23	31
Disc Arm Mounting	Rubber Torsion - 4 Elements per Arm	Rubber Torsion - 4 Elements per Arm
Disc Spacing	5" Overall Spacing (10" Spacing per Row)	5" Overall Spacing (10" Spacing per Row)
Hitch Frame	6" x 10" x 3/8"	6" x 10" x 3/8"
Center Frame	6" x 10" x 3/8"	6" x 10" x 3/8"
Wing Frame	6" x 6" x 3/8"	6" x 6" x 3/8"
Tires	Alliance 600/50R22.5 FLOTRUCK	Alliance 600/50R22.5 FLOTRUCK
Hubs	H1010-9 (10 Bolt)	H1010-9 (10 Bolt)
Roller Bearings	2-7/16" Ball Bearing 6-Lip Seal	2-7/16" Ball Bearing 6-Lip Seal
Hydraulics - Wheel/Roller	Rephasing Circuit Masters 4-1/4" x 8" x 2" Rod & Slaves 3-3/4" x 8" x 2" Rod	Rephasing Circuit Masters 4-1/4" x 8" x 2" Rod & Slaves 3-3/4" x 8" x 2" Rod
Hydraulics - Transport Lift	5" x 40" x 2-1/2" Rod	5" x 40" x 2-1/2" Rod
Hydraulics - Wing Forward	4" x 20" x 2" Rod	4" x 20" x 2" Rod
Roller Size	9'-10" (3 m)	9'-10" (3 m)
Hydraulic Jack	Standard	Standard
Safety Lights	Standard	Standard
Soil Deflector	Standard	Standard
Gauge Wheels	Standard	Standard

*Height measured with cage roller

HORSEPOWER REQUIREMENTS

- 12 to 15 hp per foot at **2" or less working depth** to achieve 8-12 mph with 20" blades (will vary by soil type)
- 15 to 20 hp per foot at **2" or more working depth** to achieve 8-12 mph with 20" blades (will vary by soil type)

Pro-Till Model

Horsepower Per Foot

	12hp	15hp	20hp
20'	250	300	400
26'	300	400	500

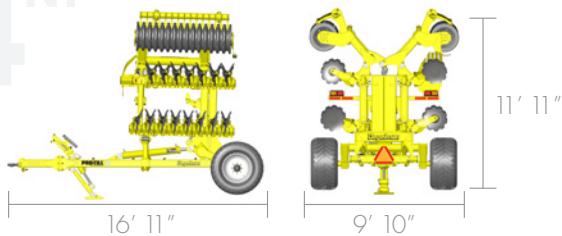
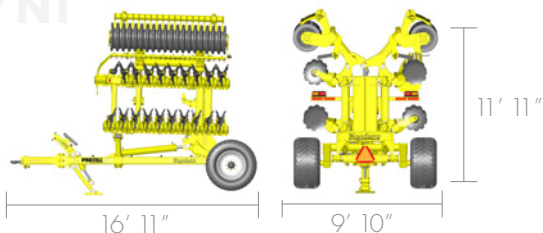
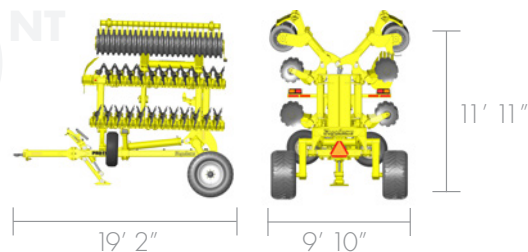


PRO-TILL 14/17/20 NARROW TRANSPORT SERIES

Small but mighty. The Degelman narrow transport series offers the same engineered tough, rugged build as its big brothers, but with a transport width under 10'. This allows the Pro-Till to safely travel in areas with narrow roads and with extreme width restrictions. Available in 14, 17, and 20 feet, The Pro-Till NT Series offers true high speed, high performance residue management, with horsepower requirements starting at 170hp.

Safely Transport To & From The Field

Pro-Till is user-friendly, allowing the operator to engage the transport position from the safety of the tractor seat. The wing-forward design is incredibly compact and stable for road transport. It incorporates an ultra-low profile-under 12' - which is ideal for clearing bridges and power lines, and folds in less than 10 feet, making it possible to pull down narrow roads and in areas with width restrictions. The hitch weight is positive, creating a safe and highly maneuverable machine.

14^{NT}17^{NT}20^{NT}

SPECIFICATIONS

Model	PT14NT	PT17NT	PT20NT
Width Available	14' (4m)	17' (5m)	20' (6m)
Weight	13,160 lbs (5,970 kg)	14,740 lbs (6,685 kg)	16,320 lbs (7,403 kg)
Hitch Weight	3,505 lbs (1,590 kg)	4,315 lbs (1,957 kg)	5,020 lbs (2,277 kg)
Number of Discs (per-wing)	15	19	23
Disc Arm Mounting	Rubber Torsion - 4 Elements per Arm	Rubber Torsion - 4 Elements per Arm	Rubber Torsion - 4 Elements per Arm
Disc Spacing	5" Overall Spacing (10" Spacing per Row)	5" Overall Spacing (10" Spacing per Row)	5" Overall Spacing (10" Spacing per Row)
Hitch Frame	6" x 6" x 3/8"	6" x 6" x 3/8"	6" x 6" x 3/8"
Main Frame	6" x 6" x 3/8"	6" x 6" x 3/8"	6" x 6" x 3/8"
Wing Frame	6" x 6" x 3/8"	6" x 6" x 3/8"	6" x 6" x 3/8"
Tires	Alliance 550/45R22.5 (328HS Series)	Alliance 550/45R22.5 (328HS Series)	Alliance 550/45R22.5 (328HS Series)
Hubs	H817 (8 Bolt)	H817 (8 Bolt)	H817 (8 Bolt)
Roller Bearings	2-7/16" Ball Bearing 6-Lip Seal	2-7/16" Ball Bearing 6-Lip Seal	2-7/16" Ball Bearing 6-Lip Seal
Hydraulics - Wheel/Roller	Master 4-3/4" x 8" x 2" Rod, First Slave 4-1/4" x 8" x 2" Rod, Second Slave 3-3/4" x 8" x 2" Rod	Master 4-3/4" x 8" x 2" Rod, First Slave 4-1/4" x 8" x 2" Rod, Second Slave 3-3/4" x 8" x 2" Rod	Master 4-3/4" x 8" x 2" Rod, First Slave 4-1/4" x 8" x 2" Rod, Second Slave 3-3/4" x 8" x 2" Rod
Hydraulics - Transport Lift	5" x 40" x 2-1/2" Rod	5" x 40" x 2-1/2" Rod	6" x 40" x 2-1/2" Rod
Hydraulics - Wing Forward	4" x 20" x 2" Rod	4" x 20" x 2" Rod	4" x 20" x 2" Rod
Roller Size	6'-7" (2 m)	8'-2" (2.5 m)	9'-10" (3 m)
Hydraulic Jack	Standard	Standard	Standard
Safety Lights	Standard	Standard	Standard
Soil Deflector	Standard	Standard	Standard
Gauge Wheels	N/A	N/A	Standard

HORSEPOWER REQUIREMENTS

- 12 to 15 hp per foot at **2" or less working depth** to achieve 8-12 mph with 20" blades (will vary by soil type)
- 15 to 20 hp per foot at **2" or more working depth** to achieve 8-12 mph with 20" blades (will vary by soil type)

Horsepower Per Foot

Pro-Till Model

	12hp	15hp	20hp
14'	170	210	280
17'	200	250	350
20'	250	300	400



PRO-CAST

PRECISION GRANULAR APPLICATOR

HIGH PERFORMANCE CHEMICAL & SEED INCORPORATION

Introducing the Degelman Pro-Cast, precision granular applicator designed specifically for Degelman Pro-Till High Performance Discs and Strawmaster series of heavy harrows.

Whether you're seeding or applying herbicides, Degelman Pro-Cast is designed to deliver an accurate spread of product in any kind of field conditions. Pro-Cast includes state of the art features including a Non-Pressurized tank, ISOBUS controls and a simple, accurate metering system that is designed to make granular application, and cover crop seeding safer and more efficient than ever.





Tank

- Concealed platform and ladder
- Plastic fan housing
- Thread on lid
- Bulk bag support frame
- Access gate to empty tank
- 45 degree slope sheets ensure complete clean out
- Steel tank



Metering system

- Simple calibration
- High accuracy
- Easy to adjust metering wheels
- Polyurethane housing
- Stainless steel components
- ISOBUS interface





More Features

- Tank level indicator
- Calibration door indicator
- Cab monitor
- Equipment harness
- Metering control switch
- Bulk bag support frame (optional)

SPECIFICATIONS

Model	PC80	PC120
Capacity	80 FT ³ /65 Bushels	120 FT ³ /95 Bushels
Max. Application Rate	200 lbs/acre @ 10 MPH (40 ft Pro-Till)	60 lbs/acre @ 10 MPH (100 ft Strawmaster Pro)



SCORPION HITCH

The Degelman Pro-Till already offers one of the most versatile discs in the industry. Add one more thing to the list of things you can accomplish with your Pro-Till. With the Scorpion High Speed Applicator Hitch, you can put down seed, work in fertilizer or do both at the same time. In ideal conditions, an air drill or planter is still going to be the first choice for many growers, but for wet seasons where getting your seed in the ground in adverse conditions and in a short window is proving challenging, the Scorpion Hitch for Pro-Till makes a great back-up plan.





Degelman

ENGINEERED TOUGH

www.degelman.com