

Degelman

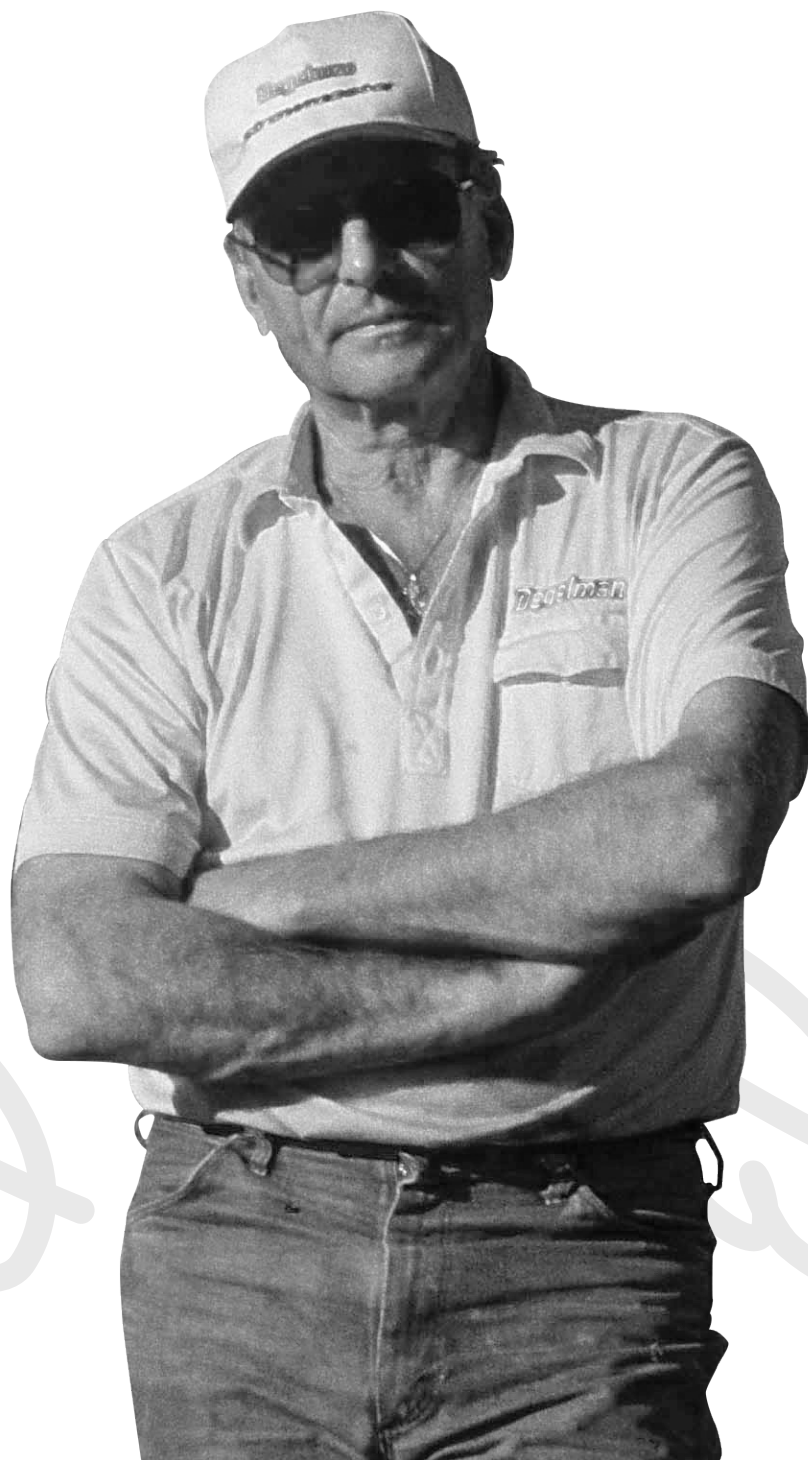


ENGINEERED TOUGH

An aerial, high-angle photograph of a city, likely Los Angeles, showing a large stadium in the foreground and a river winding through the city. The image has a grainy, textured appearance.

BUILD IT **TOUGH,**
BUILD IT **HEAVY,**
BUILD IT **TO LAST,**
FROM TOP TO BOTTOM.

- Wilf Degelman



ENGINEERED TOUGH

Wilf Degelman started Degelman Industries over 57 years ago with one thing in mind. He wanted to make products that had a true impact on the farm. Wilf was raised on farm values, not business values. He believed in honesty, being upfront, and was always interested in what farmers were doing and where they thought the industry was headed. He understood the costs associated with farming and set out to make practical equipment that would make seeding and harvesting easier.

In 1962 Wilf Degelman built a heavy duty rock picker, the product that started it all, out of his barn in Raymore, SK. Fast forward to today, and we still build all Degelman products with his philosophy in mind; "The fewer number of parts and complexity the better - and when you build something, build it right, build it heavy and build it to last - from top to bottom".

We focus on support and make the experience of owning a Degelman unlike any other. We are a well established company, with deep roots in the agricultural industry. We take exceptional pride in what we do, and manufacture every piece of equipment with extreme focus and care. We go above and beyond, like the marks you'll find on our equipment to show the torque has been done right, and creating easy to follow quick start manuals, so you're ready to roll on a Sunday morning. We make all of our products with the farmer's needs in mind.

Over the last 5 decades, there have been great advances in technology, but the foundation of Degelman remains the same: build simple, heavy, reliable equipment, that will last for generations. We choose to innovate rather than imitate, and work hard to remain an industry leader. Wilf truly said it best: "Build it right, build it heavy and build it to last - from top to bottom".

Degelman. Engineered Tough.

Degelman

WHAT THEY ARE SAYING ABOUT DEGELMAN



Customer

"We've been running Degelman blades since 2001. Degelman blades look to be the strongest that we saw at the time, so we wanted to go with the best."

- Randy Peddicord, Texas

"We've been using Pro-Till for 4 years now, and we feel like it's the best tool we have on the farm."

- Don Zoleman, Illinois

"That's the toughest rock picker out on the market right now. We've got 2 for the last twenty years, actually we got pretty well the first one Degelman ever built. The most important thing is... how strong it's built."

- Paul Hofer - Saskatchewan

Dealer

"Degelman is a company that has a long history of backing their product; they take care of their customer."

- Rocky Mountain Equipment,
Western Canada

"Of all the different suppliers we distribute for, no-one has supported us better than Degelman over the last 20 years"

- Muddy River, Australia

"Quality shortline products like Degelman will continue to grow; junk brands will fall away."

- Rock Tuff, South Dakota

"The Degelman Pro-Till is really that WOW tool. We'll go out on the demo and these things do not leave the farm."

- Central Illinois Ag, Illinois

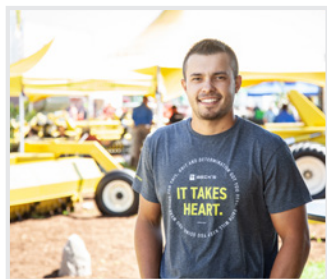
"Quality. Period. Durable, just look at them. They are designed better and perform better than their competition."

- Rock Tuff, South Dakota

"Quality. Pro-Till doesn't really have a lot of competitors..."

- Cervus, Western Canada

CUSTOMER SPOTLIGHT



Evan Marr
Jacksonville, IL
Pro-Till

"We did some custom work, they had some weed issues that got out of hand, and the Pro-Till just made it look magnificent on the first pass through. We did one pass through it, and they planted right in behind it. It's been well worth the money - I feel like it's paid for itself within just a year or two."



Lynn Smith
Battlecreek, MI
Rock King

"I pick anything from 3" to 34" - anything that will go inside the reel. This is the 9th rock picker I've had, and I've got two Degelmans now. You don't have to dump as often, and when you have them as thick as I do, 50-100 tons of rocks per acre, that makes a big difference. "



Robert Western
Stanley, ND
Rock Digger

"Anything Degelman makes you can't break it. I wish I would've had one of these rock diggers 50 years ago."



Randy Johner
Midale, SK
Landroller

"We have a Degelman Landroller and it'll run over 5-6 thousand acres a year. We buy Degelman because we know that Degelman is going to be a reliable product and we know it's going to hold its resale value because it's well respected in the industry. Everyone else knows that their products are good. But more than that, it's because it gets the job done for us. We need something that's going to get a lot of acres done quickly. Reliability has to be good. Degelman does that for us."





TRUE GREASELESS TECHNOLOGY

Put away the grease gun. We know the window for spring and fall work is quick and unforgiving. Give yourself the upper hand with Degelman's game changing True Greaseless Technology.

Farming operations are becoming bigger and more complicated every day. We know time is money, and that today's growers have more to worry about than greasing their equipment. We have invested time and money, and are committed to bringing True Greaseless technology to all products we develop. Any product name with the TGT marking on it, features our industry leading True Greaseless Technology.



Pin Eye cylinders

The welded pin eye cylinder series is designed to withstand the most demanding applications on the market today. Lion's extensive design experience has resulted in a premium rephasing cylinder with the latest in sealing and rephasing technology and standard Lion 1000 induction hardened rods for the ultimate in corrosion protection and durability.



Exclusive Self-Lubricated, Zero-Maintenance Bushings

No metal on metal contact with our state of the art bushings. These bushings, manufactured from a friction liner applied on a glass fiber structure, have excellent friction properties and improved wear resistance without external lubrication even on high loads.

Bushing Seal

The wiper edge removes even the toughest dirt and contaminants from the pin, keeping the system running clean and at its peak performance. The metal enclosure ensures a secure fit in the open housing, preventing expulsion of the wiper even under extreme conditions.

Oversized Electroless Plated Nickel Pin

At 2" - 2.5" in diameter, these high tensile steel pins are 60% larger than any other pin on the market.





PRO-TILL[®]

HIGH PERFORMANCE TILLAGE

High Performance Tillage

This is Pro-Till by Degelman. The fastest and most versatile piece of tillage equipment you will ever own. Pro-Till shreds heavy fall residue, opens up spring fields, levels ruts, destroys clods and produces an absolutely perfect seed bed. Pro-Till is High Speed, High Performance Tillage.

Horsepower Requirements for All Sizes

- 12 to 15 hp per foot at **2"** or **less working depth** to achieve 8-12 mph with 20" blades (will vary by soil type)
- 15 to 20 hp per foot at **2"** or **more working depth** to achieve 8-12 mph with 20" blades (will vary by soil type)

Pro-Till Model

| | Horsepower Per Foot | | | |
|---------------------|---------------------|------|------|---|
| | 12hp | 15hp | 20hp | |
| 14' NT | 170 | 210 | 280 | ✓ |
| 17' NT | 200 | 250 | 350 | ✓ |
| 20' / 20' NT | 250 | 300 | 400 | ✓ |
| 26' | 300 | 400 | 500 | ✓ |
| 30' | 360 | 450 | 600 | ✓ |
| 33' | 400 | 500 | 600 | |
| 36' | 450 | 550 | 600 | ✓ |
| 40' | 500 | 600 | 600+ | |
| 41' | 500 | 600 | 600+ | ✓ |
| 45' | 550 | 600+ | 600+ | ✓ |

Exclusive Options



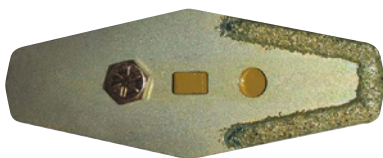
Double V Disc

The Double V Notch blade does the job of slicing & penetrating in hard soils, cutting straw and residue, providing traction to keep the blades rotating. The result is a smoother furrow bottom compared to the more conventional U notch blade.



Rubber Ofco Roller

Excellent all-around packer with a unique corrugated ridge profile, which leaves a field finish designed to manage moisture and prevent soil erosion.



Max Life Scrapers

With up to 10 times longer wear than standard scrapers, Max Life scrapers take advantage of new hard surfacing technology. Tungsten carbide is mixed directly into the molten weld bead.

PULLED AT SPEEDS OVER 10 MPH

The Pro-Till shreds residue at speeds over 10 mph, up to three times the speed of traditional cultivators, while ensuring uniform distribution of residue to eliminate problems such as uneven and delayed emergence, hair pinning, erosion and seeder/planter plugging.



Wet or Dry. Spring or Fall. Work In The Most Challenging Conditions.

- Level Ruts, Clean up Cattails and Sloughs
- Break Pasture and Grassland
- Superior Residue Management
- Prepare Your Seedbed Quickly
- Rubber Suspension System Offers Flawless Rock Protection
- Safely Transport To & From The Field
- Maintenance-Free Roller Bearings
- Simple, Strong and Clean Scraper System





PRO-CAST

PRECISION GRANULAR APPLICATOR

High Performance Chemical & Seed Incorporation

Introducing the Degelman Pro-Cast, precision granular applicator designed specifically for Degelman Pro-Till High Performance Discs and Strawmaster + heavy harrow.

Whether you're seeding or applying herbicides, Degelman Pro-Cast is designed to deliver an accurate spread of product in any kind of field conditions. Pro-Cast includes state of the art features including a Non-Pressurized tank, ISOBUS controls and a simple, accurate metering system that is designed to make granular application, and cover crop seeding safer and more efficient than ever.



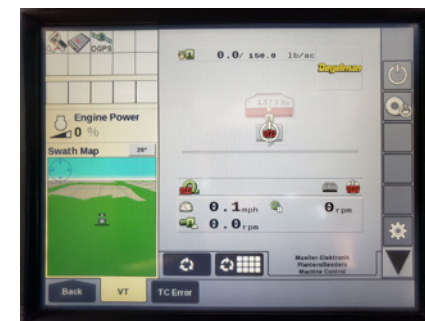
Tank

- Concealed platform and ladder
- Plastic fan housing
- Thread on lid
- Bulk bag support frame
- Access gate to empty tank
- 45 degree slope sheets ensure complete clean out
- Steel tank



Metering system

- Simple calibration
- High accuracy
- Easy to adjust metering wheels
- Polyurethane housing
- Stainless steel components
- ISOBUS interface



Options

- Bulk bag support frame
- Tank level indicator
- Calibration door indicator
- Cab monitor
- Equipment harness
- Metering control switch

SCORPION HITCH

The Degelman Pro-Till already offers one of the most versatile discs in the industry. Add one more thing to the list of things you can accomplish with your Pro-Till. With the Scorpion High Speed Applicator Hitch, you can put down seed, work in fertilizer or do both at the

same time. In ideal conditions, an air drill or planter is still going to be the first choice for many growers, but for wet seasons where getting your seed in the ground in adverse conditions and in a short window is proving challenging, the Scorpion Hitch for Pro-Till makes a great back-up plan.





HEAVY HARROWS

Degelman Industries pioneered the heavy harrow over 27 years ago, and hasn't looked back since. If you're looking to tackle enormous straw problems, the Degelman Strawmaster line of heavy harrows is what you're looking for. Our impressive line of Strawmaster High Performance Field Conditioners all come equipped with the exclusive, game changing, carbide Endura-Tip tines, which significantly increase the life and performance of your Degelman Strawmaster.



Exclusive Tungsten Carbide Endura-Tip Long Life, Maximum Performance

Degelman's tungsten carbide Endura-Tip is exclusive to Degelman Strawmasters. Significantly increasing the life and performance of your harrow bar, the tungsten carbide tipped harrow tines maintain their original length and shape, resulting in enhanced control and a more consistent field finish.

Tungsten Carbide

Simply the best tines available on the market today. At 1.5 times the hardness of titanium, our tungsten carbide tine tips are proven to last 8 – 10 times longer than our competitors.

Cutting Edge

The sharp corners of the square tungsten carbide tip act as cutting edges, chopping and mixing at a far superior rate than that of traditional round tine tips.

26" or 30" of Vibration

Perfectly engineered for movement. Creating the maximum amount of mixture, leaving a fine, flawless seedbed.

STRAWMASTER | PRO

HIGH PRODUCTION FIELD CONDITIONER



In today's farming, time is precious. We have lots of land to cover, with a relatively short growing season. Our leading farmers have been waiting for a tool to help warm the soil and promote effective seed germination. Available in sizes up to 120 feet, The Strawmaster Pro, equipped with our exclusive 30" tungsten carbide Endura-Tip tines, offers incredible tine penetration. This not only rakes straw, but moves ground, blackening up the field and stimulating plant growth when it's most critical. The Strawmaster Pro is a lot more than a big harrow.



STRAWMASTER



The Degelman Strawmaster® is the revolutionary machine designed to tackle enormous straw problems. We pioneered the simple torsional spring bar design which offers performance unlike other heavy harrows. With 26 inch long tines equipped with tungsten carbide tips placed in five or seven rows, this machine is at the forefront of modern straw management. The Strawmaster® will shatter straw, control weeds, rake flax straw, and incorporate seed and chemicals.






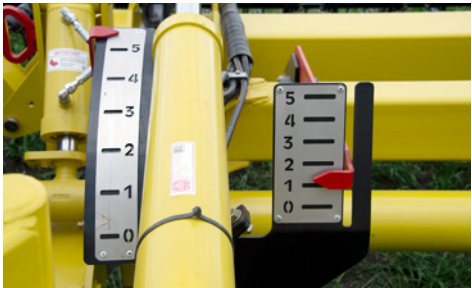
STRAWMASTER +

The All New Strawmaster + was designed from the ground up to provide the ultimate field finish. Available in 4, 5 and 7 row configurations, the Strawmaster + can be customized to match your specific needs. At the heart of the machine are the robust 10x10 wing beams. These provide consistent beam torque throughout the machine, and help spread straw evenly for a more consistent finish. Add up all of these great features: Carbide Endura Tips Tines + True Greaseless Technology + mirrored tine rephasing cylinders for increased tine angle power + reduced transport width + multiple setting indicators + large flotation tires - and you'll understand why it's called Strawmaster +.

Available in 4 row, 5 row, and 7 row configurations

- 4 row features 5/8" x 30" tines
- 5 row features 5/8" x 26" tines
- 7 row features 1/2" x 26" tines





Customized Field Finish

There are three setting indicators on the Strawmaster +. One for cart height, one for beam torsion and one for tine angle. Knowing exactly how your machine is running is key when getting your desired field finish.



The Strawmaster X Disc Harrow, with disc on command technology gives you the ability to cover large acres at high speeds in a large working width. Built off the impressive Strawmaster+ frame, the design allows for

more tillage than a traditional heavy harrow, but less aggressive than a high speed disc. The Strawmaster X will size residue, while still leaving some standing material to catch snow.



Discs On Command

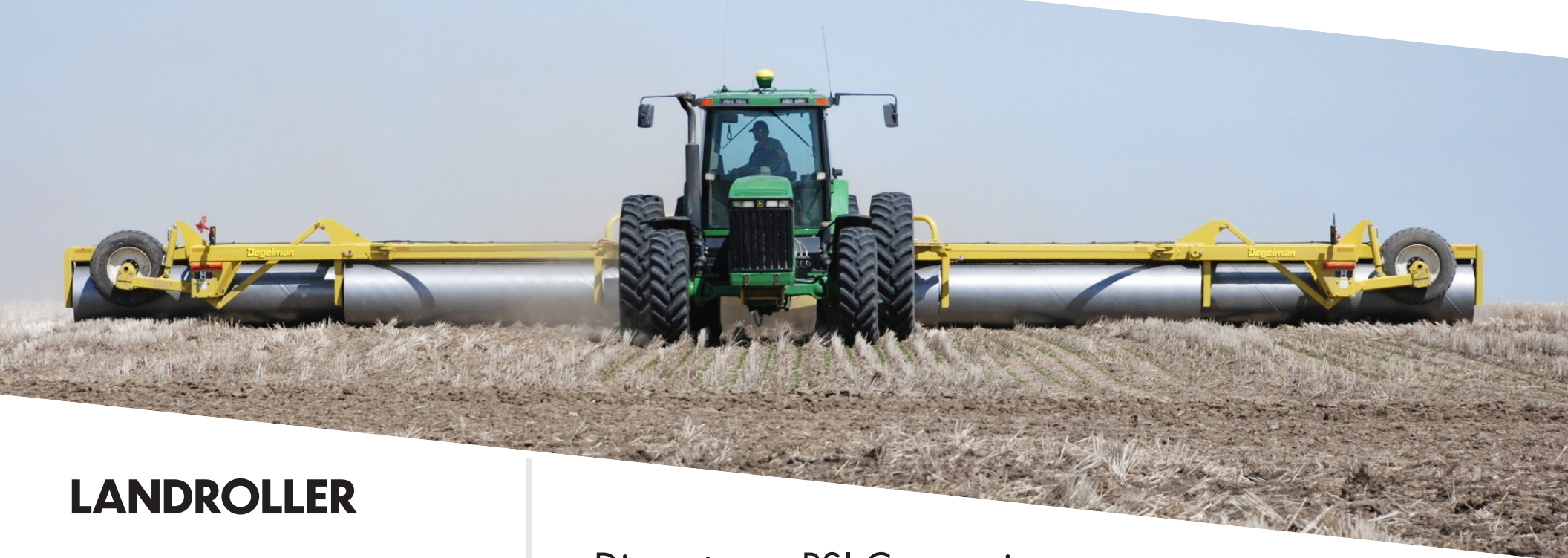
The Adjustable angle of 0 – 15 degrees on the discs give you the ability to blacken the soil which warms up the field quicker in spring for seeding, speeds up drying in wetter years and allows material to break down over winter. In drier years, lift the discs out of the way and use as a traditional 4 bar harrow.



Simple Disc Harrow Design

After years of testing we have found that one row of 20" discs at 10" spacing combined with 4 bar harrow sections equipped with 30" tines (that's the same as our Strawmaster Pro) resists plugging in wet conditions and allows material to flow through the machine more freely.



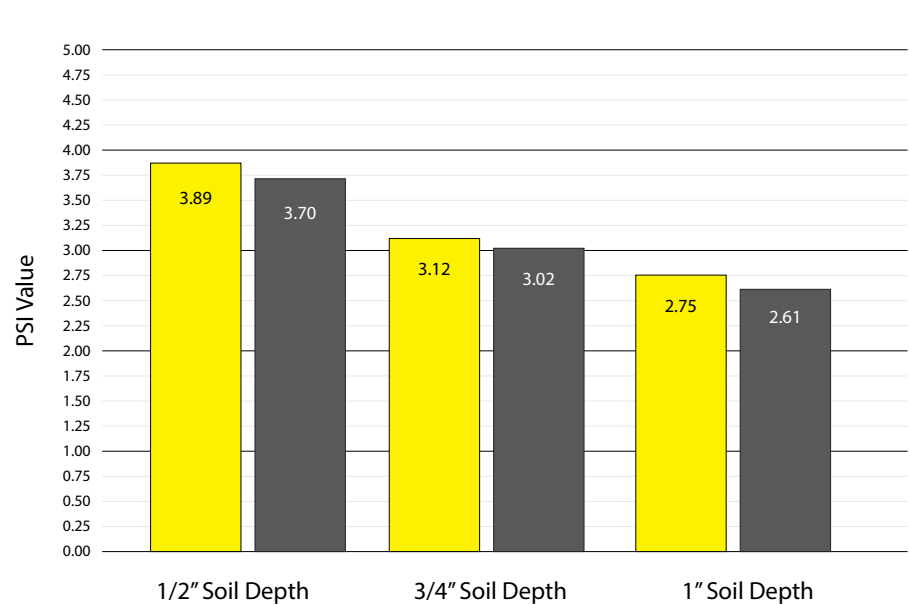


LANDROLLER

Flattens The Ground -
Pounds The Stones In

Available in sizes from 20 to 80 feet, a Degelman roller provides combine protection by flattening the fields and pounding the stones in, making it possible to harvest peas, lentils, and beans quickly and efficiently. The 36" drum provides excellent packing pressure and smooth operating.

Diameter vs PSI Comparison



- 36" Diameter
- 42" Diameter

A smaller diameter 36" drum, since it has less surface area, will provide more downward packing pressure per foot. In areas that are traditionally more minimum till to no-till, this extra packing pressure will handle stones and level the field more consistently.



FIVE-PLEX 64/80



64 feet and 80 feet. Extreme Duty. No maintenance. These five-plex rollers contour like never before, allowing you to cover a lot of ground, worry-free. Degelman landrollers are some of the heaviest, most reliable available. Ideally used for peas, beans and lentils, they also prepare the perfect bed for haying, grasses and silage.

TRI-PLEX 34/45/51



Degelman landrollers not only decrease downtime and fuel costs, they also provide optimal seed to soil contact while reducing weeds and moisture loss. Level land allows cutter bars to safely access the base of plants without the risk of rock ingestion. This allows for a faster, safer and easier harvest which ultimately translates to a increased yield on pulse crops such as beans and cereals.

SINGLE DRUM ROLLER



The single drum landroller was specially designed for specialty crop producers who find our standard rollers too large for their farming operation. The single drum roller weighs approximately 7,840lbs and measures 20' in working position. With hydraulic fold capabilities, it easily transforms to a narrow 8' transport width, making this machine safe and simple to transport. It's 36" diameter drum incorporates the same heavy duty features as our Tri-Plex rollers such as heavy duty cylinders, oversized shafts and long life bearings.



LEGENDARY ROCK REMOVAL EQUIPMENT

The Degelman Signature series rock pickers are the result of almost 60 years of pursuing excellence. Degelman rock pickers are unrivaled for performance and durability. Featuring a long swing pole, superior rock and soil separation, a heavy reel spring design and a robust frame. Our attention to detail means these machines will work flawlessly for years to come, as you will commonly find Degelman rock pickers made decades ago still working today.

signature^{ROCK PICKER}
W. J. Degelman



The King is here. Degelman introduces its largest rock picker ever. With an incredible 8' wide grate, 5 cubic yard bucket and 7'3" dump height, the Degelman Rock King is simply second to none. With 30 inches of clearance between the paddle assembly and the grill, large stones are easily picked. These machines are designed to provide relentless heavy stone work day in and day out.

ROCK KING 9600



Used across the globe for over 35 years, the RR1500 has earned a reputation for fast, efficient windrowing in rock-strewn land. The 14' wide spiral drum rakes a large swath of rocks from the field with each pass, yet the entire machine folds into a 7-1/2' narrow transport width with 10" of ground clearance.

rock rake



The Degelman RD320 is a trouble-free and versatile machine that has been used for years by professional landscapers, contractors and farmers. The RD320 is designed to dig out submerged rocks and grab, lift, and transport boulders.

rock digger



BULLDOZER BLADES

Degelman Industries has been engineering tough, high performance equipment for almost 60 years. See for yourself with our industry leading Degelman Bulldozer Blades.

No two tractor manufacturers are alike, so we don't develop a blade that is "one size fits all. Degelman engineers, designs and individually builds all Bulldozer Tractor fit-ups to ensure proper mounting locations are the best spot to push from - protecting your tractor investment. Featuring a Precision Machined Tubing Finish, Superior Seals and High Grade Wear Bands the Degelman series of Bulldozer Blades adds value and versatility to your tractor.

3500 Series



27"



2WD & FWA
40 - 150 hp



Hydraulic Lift, Angle

4600/5700 Series



33"



2WD & FWA
65 - 380 hp



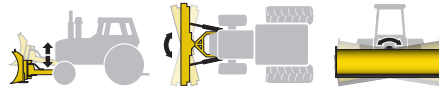
Hydraulic Lift, Angle



5900 Series



2WD & FWA
125 - 500 hp

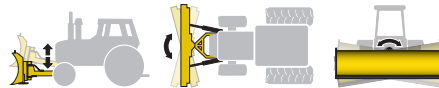


Hydraulic Lift, Angle, Tilt

66/69/7200 Series



4WD
200 - 500 hp

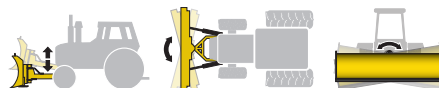


Hydraulic Lift, Angle, Tilt

7900 Series

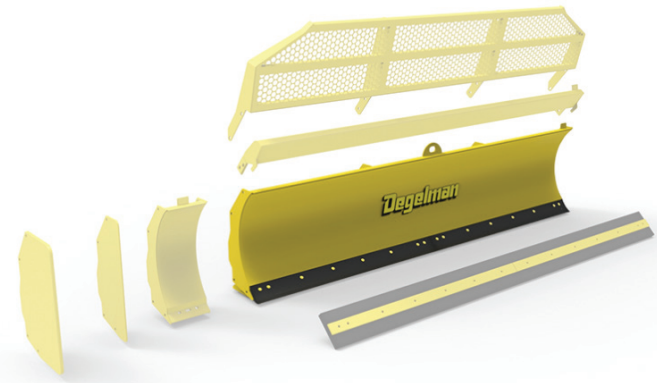


4WD
300 - 700 hp



Hydraulic Lift, Angle, Tilt

USE OUR BUILD A BLADE FEATURE TO QUICKLY FIND THE RIGHT FIT-UP FOR YOUR TRACTOR



With over 450 different combinations of tractor manufacturers and blades available, the Degelman build-a-blade tool is an easy and efficient way to find which blade is right for your tractor.

www.degelman.com

Build A Blade

Select Power Source



Build ID

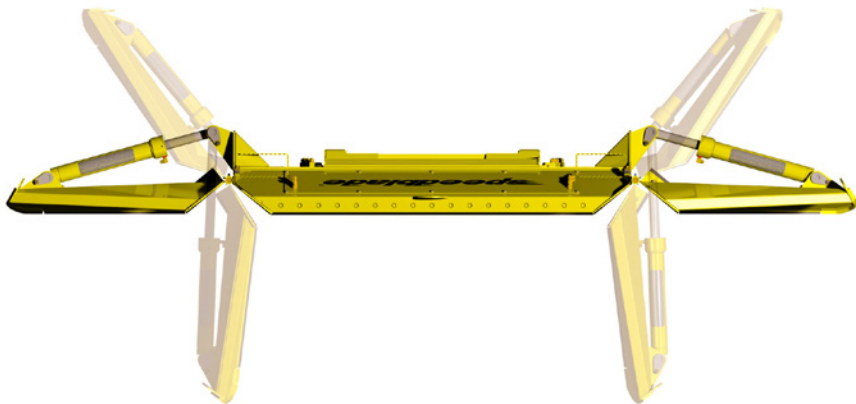
Search

SNOW REMOVAL

In addition to our Degelman dozer blades, Degelman offers two more options designed to be easily adapted to a variety of payloaders, wheel loaders, skid steers and most ag tractors. No matter what you use to push snow, we guarantee a quality, secure fit-up. Specifically designed to move large amounts of snow quickly, easily and efficiently.

Speedblade

Degelman's Speedblade is designed so you can hydraulically open the blade to its maximum width of 15' for small and large snow drifts or fold the wings in to move and contain high volumes of snow. And with the option to hydraulically put the wings at whatever angle you want, you can change the width as you go depending on snow fall and how much room you have to maneuver.



Strongbox

The Degelman Strongbox is a simple, strong and effective tool for high volume snow removal. The unique design of the cone gusset provides a self-cleaning surface to prevent snow and ice from accumulating while increasing structural support to the side plates.





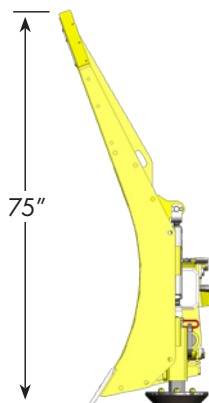
SILAGE KING

It's Good to be King

The Silage King is built on the same rock-solid foundation that Degelman is known for, and includes features that will significantly improve how you push silage. With our new streamlined design, this blade pushes silage with less horsepower, while maximizing the approach angle - allowing you to push the silage up where it belongs.

Designed for Silage

The Silage King with silage extension comes in at 75" tall - the tallest dozer blade in the industry. The curvature has been slightly flattened out from the 7900 in order to prevent the blade from holding on to excess material, allowing for even distribution. With more height, and less curvature, you can push more silage with less horsepower.



SILAGE KING

7900

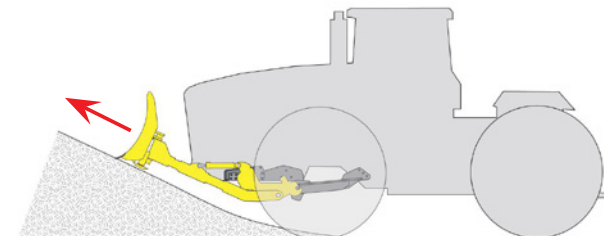
19"

Reduced Overhang for Better Control

In order to give the operator more control, we've moved the blade 19" closer to the tractor. This reduced overhang improves control while keeping the blade at the ideal approach angle to the silage pile.

Approach Angle

Degelman's Radial Lift Approach



When an adjustment needs to be made by the operator, fast blade response time is necessary. The Degelman Silage King is mounted with only one pivot point, making the response time as quick as possible. This radial lift design makes it easier to push, carrying loads **UP** the pile, rather than **INTO** the pile.



MANURE SPREADERS

How do you build the best manure spreader in the world? Start with Degelman, renowned for engineering tough, high performance equipment for over 55 years. The design is unmistakably Degelman. From the ground up, these machines have been designed with rocks in mind, from its

proprietary retractable free-swing flails, super duty gearbox, smooth sidewalls and heavy-duty frame to its clean gate opening. Available in 2 sizes, the M28 and M34 manure spreaders are designed to handle anything you can load in it.



For the most part, all spreaders in the world employ beaters made from some variation of a helical or auger shape. This

rigid design is always vulnerable to rock damage and high maintenance costs. The Degelman Rock Bypass System and Hammerhead Paddles are the heart of the M series manure spreaders. Five rows of free-swing flails, not only collapse upon stone impact, but will exceed expectations for throw distance, durability and even distribution pattern.

Degelman manure spreaders cut and tear material, drop heavier crumbled material to the next lower set of paddles for final processing and discharges material over 60 feet.



CUTTING EQUIPMENT



Rev 1500 Rotary Cutter

This is the indestructible REV 1500 rotary cutter from Degelman. The deck is made from a 3/16 inch impact resistant steel formed to create a smooth sloping deck. This curved shape deck is manufactured with continuous welds and without pockets that collect debris. As the cutter operates, debris sheds off. Maintenance is quick, easy and weeds are not transferred from one location to another.

Sidearm

With the Degelman Sidearm® an operator can cut where it's never been possible to cut before - safely.

The operator can stay on the highway and position the cutter 50 degrees on either side of the road. Cut from the right, the left or straight back.

OnePass

The patented Degelman OnePass system reduces operating costs by mowing and applying herbicide simultaneously. A unique delivery system allows you to apply herbicide in sensitive areas without running the risk of airborne drift or contamination.





CONTACT US

We believe that offering a high quality product is only part of the equation and that the secret to success is an unwavering commitment to customer service. Our customers are the driving force behind everything that we do, from providing outstanding follow-up support and service, to building a reliable dealer network. We understand the value of customer trust, and we strive to earn and maintain that trust with each and every customer.



Degelman Industries LP

272 Industrial Drive
Regina, Saskatchewan S4P 3B1
Canada

Ph: 306-543-4447
Tel: 800-667-3545

info@degelman.com



Degelman Industries USA Ltd.

105 South Boeddeker Dr.
Hillsboro, North Dakota 58045
USA

Tel: 701-636-1876
Fax: 701-636-1877

USA@degelman.com



“ QUALITY SHORTLINE PRODUCTS, LIKE DEGELMAN, WILL CONTINUE TO GROW ”



Degelman

ENGINEERED TOUGH

www.degelman.com