

# Garfield



1150 - 12 YD, Dolly

# Garfield

1

## **Model 1150**

***WELCOME: You are now the owner of one of the most versatile machines for landscaping, terracing and earth moving. In years to come, your farm or ranch operation will benefit from the efficiency, utility, and economy provided by the GARFIELD SCRAPER.***

***Please take time to be sure that you understand the proper maintenance and safe operation of this machine. Read this operator's manual carefully and you will get better results and service with fewer problems from your GARFIELD SCRAPER.***

***GARFIELD, INC., provides warranty on each new machine sold. Be sure to fill out the warranty card and return it to GARFIELD, INC., within ten (10) days after delivery of your machine to be eligible for this warranty. If you did not get a warranty card with your machine, contact your Dealer to receive one. The completed warranty card must be on file with GARFIELD, INC., ENID, OK before warranty claims will be honored. GARFIELD, INC. will not provide warranty on any machine that has been altered or used for something other than its intended use.***

***GARFIELD, INC. reserves the right to make any changes, or add improvements to its products at any time without incurring any obligation to make such changes on previously manufactured equipment.***

## SAFETY

- 1. Do not lubricate, adjust, or repair when machine is in motion.***
- 2. Follow all laws when transporting on highways.***
- 3. Never allow personnel to ride on machine.***
- 4. All hydraulically elevated components must be blocked to prevent accidental lowering or just be lowered to the ground when adjustment or repairs are made.***
- 5. Keep all personnel a way from machine while it is being operated or being cycled.***
- 6. Drive slowly over rough ground, side hills, and around curves.***
- 7. OSHA requires that as a farm employer you meet certain requirements. Become familiar with and comply with those requirements.***
- 8. Be certain anyone who operates this machine understands all safety related items.***
- 9. Should hydraulic hoses and/or fittings be accidentally damaged, replace those components immediately for safe operation. Never open hydraulic components under pressure.***
- 10. Always put transport lock in while traveling down the road.***

## **SERVICE, MAINTENANCE, AND OPERATION** **Model 1150**

***The machine should be greased every four hours or daily. Depending on usage.***

***There are twenty-four (24) different grease zerks on the machine. One on each cylinder pin. One on each of the rear frame pivot pins. Four on the push gate. Four on the guide rollers. One on the hitch. One on the ball and receiver. Two on the clam shell.***

***The wheel bearings should be repacked yearly.***

***Tire pressure should be checked and kept at minimum 50lbs. each.***

***Lug nuts should be checked periodically.***

# Garfield

4

## OPERATION

### Model 1150

- 1. Hook up to the tractor, cycle all hydraulics, Be sure to remove transport locks by raising the scraper with your hydraulics before operating.***
- 2. There are two sets of hydraulic controls: The two center hoses control the raise and lower. The two outside hoses operate the clam and the pushgate. The clam will raise completely open, before the pushgate cylinders start pushing. You can level from 0 to 16 inches by adjusting the height of your scraper and then pushing out your load.***
- 3. Grease every 4 to 6 hours. There are 24 grease zerks on your 12-YD scraper. It is best to lower your scraper to ground level for greasing.***
- 4. Check air pressure in all tires. Should be a minimum of 50lbs. Lug bolts should be checked periodically.***



## WARRANTY

***Under the conditions described herein GARFIELD, INC. will within 12 months from the date of purchase on agricultural designed the operated machinery, and 90 days for hire commercial machinery, supply or at GARFIELD'S option, repair any part manufactred and/or workmanship, upon receipt of the damaged part.***

***GARFIELD components manufactured by companies other than GARFIELD are warranted soley by those companies. Those components include but are not limited to tires, rims belts, hoses, and hydraulics.***

***GARFIELD will not warrant any part which in GARFIELD'S opinion has failed due to modifications, abuse, misuse, improper maintenance, or due to normal wear.***

***GARFIELD will pay no further expenses, including but not limited to transportation, labor and loss of time income, or crops.***

***This warranty is made expressly in place of all other guarantees or warranties, expressed or implied.***

**FORWARD**

*This manual is written as a guide for owners and operators of the GARFIELD equipment, read it carefully and follow the suggestions which are made. Keep this manual in a convenient place for quick, easy reference and use it whenever questions come up.*

*Fill in the following information now for future reference and convenience. Always give this information to your Dealer when ordering new parts, or asking for help. Your GARFIELD dealer is your primary source for information, however, if at any time it is necessary for you to write directly to GARFIELD, INC. for additional information, give the model and serial number of your machine and as much descriptive information as possible. This will help us to do a better job of solving your problem and/or getting parts to you.*

MODEL NO. \_\_\_\_\_

SERIAL NO. \_\_\_\_\_

DATE OF PURCHASE \_\_\_\_\_

NAME AND ADDRESS \_\_\_\_\_

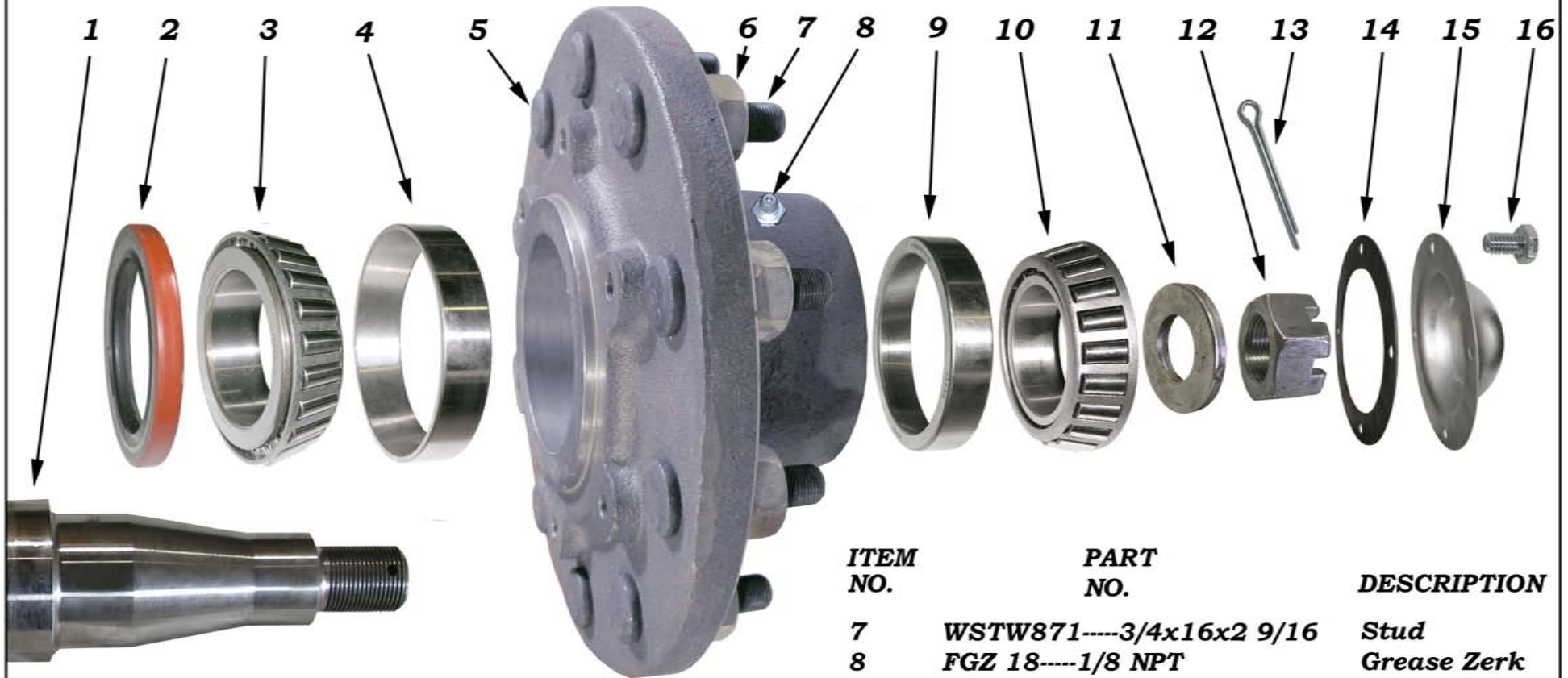
\_\_\_\_\_  
\_\_\_\_\_  
\_\_\_\_\_  
\_\_\_\_\_

*It is the policy of GARFIELD, INC. to make improvements on our product. GARFIELD, INC. reserves the right to make these improvements without incurring any obligation to those machines already in the field. Years of research and development combined with experience gained through close contact with operators has been drawn upon designing your products.*

**GARFIELD, INC.  
500 W. SOUTHGATE  
ENID, OK 73703  
580-233-1410  
800-382-4478**

# Garfield

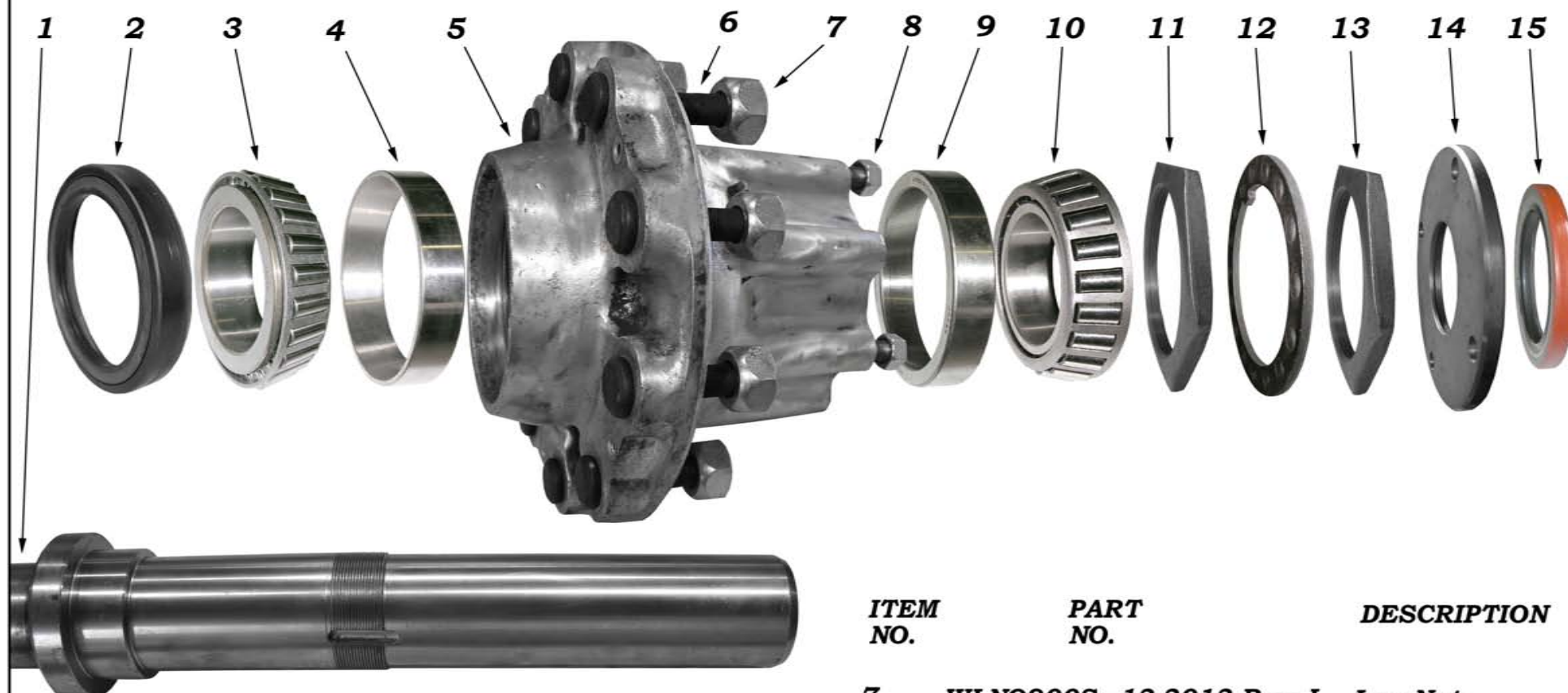
## Hub Assembly, 1150 Front



ITEM NO.	PART NO.	DESCRIPTION	ITEM NO.	PART NO.	DESCRIPTION
1	WSPW871----	Spindle	7	WSTW871----3/4x16x2 9/16	Stud
2	WSW871----CR#30087	Seal	8	FGZ 18----1/8 NPT	Grease Zerk
3	WIBW871----39485	Inner Bearing	9	WORW871----453A	Outer Race
4	WIRW871----39520	Inner Race	10	WOBW871----460	Outer Bearing
5	WHBW871----	Hub	11	WWW871----1.22 Dia.	Washer
6	WLNW871----	Lug Nut	12	WSNW871----1 7/8"	Spindle Nut
			13	WCPW871----1/4 x 2	Cotter Pin
			14	WGW871----	Gasket
			15	WDCW871----	Dust Cap
			16	WBW871----	Bolt
			17	WHBW871 H&S----	Hub Assembly

# Garfield

## Hub Assembly, 1150 Rear

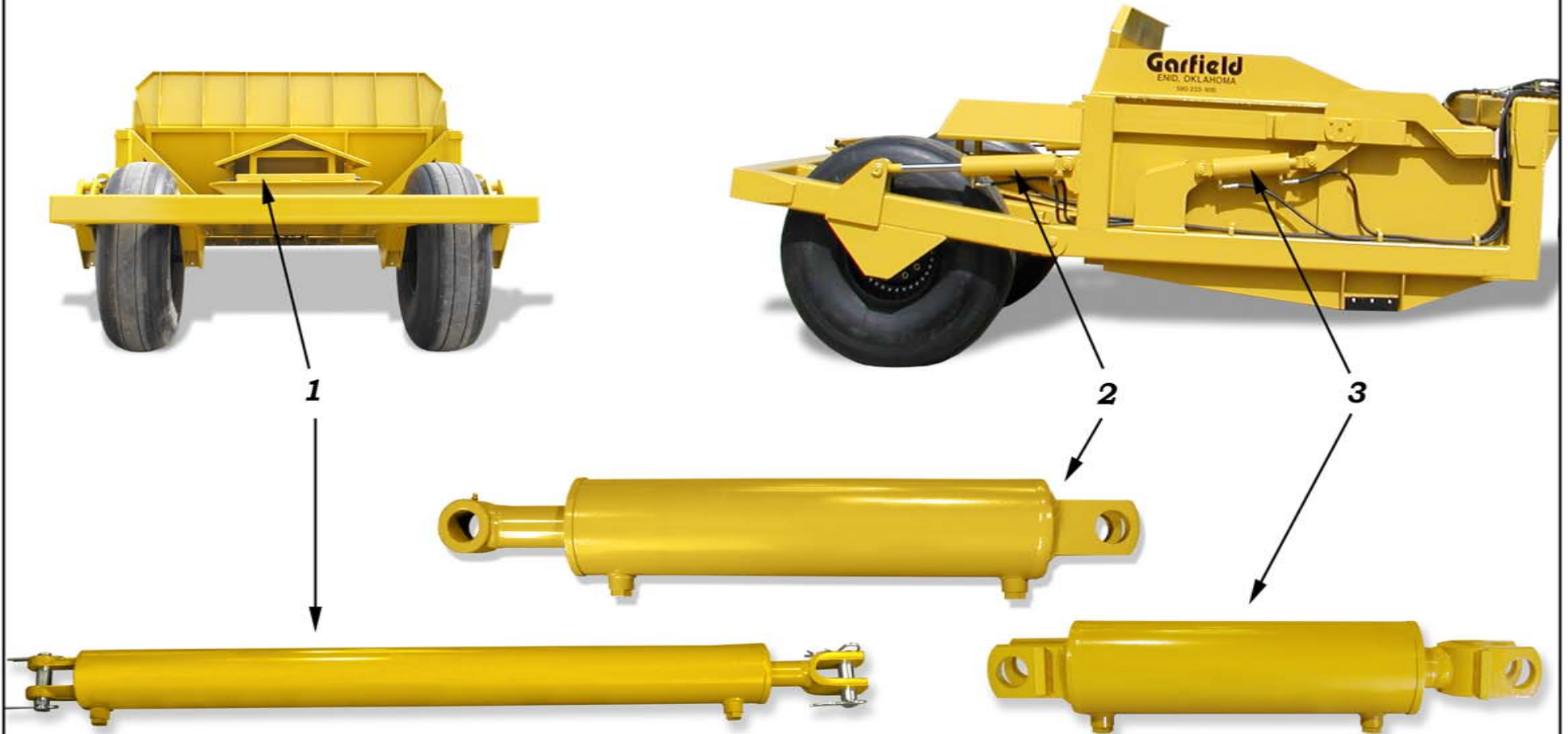


ITEM NO.	PART NO.	DESCRIPTION
1	WSPQ900S----	Spindle
2	WISQ900S-----NAT370003A	Inner Seal
3	WIBQ900S-----594A	Inner Bearing
4	WIRQ900S-----592A	Inner Race
5	WHBQ900S----	Hub, 10-Bolt
6	WSTQ900S-----13-1203 R or L	Hub Stud

ITEM NO.	PART NO.	DESCRIPTION
7	WLNQ900S---13-3013 R or L	Lug Nut
8	-----3/4 NF	Nut
9	WORQ900S-----572	Outer Race
10	WOBQ900S-----580	Outer Bearing
11	WSINQ900S-----06-411	Inner Nut
12	WWSQ900S-----06-413	Spindle Washer
13	WSONQ900S-----06-412	Outer Nut
14	WDCQ900S----	Dust Cap
15	WOSQ900S-----NAT416404	Outer Seal

# Garfield

*Cylinders, 1150*



**ITEM  
NO.**

**PART  
NO.**

**DESCRIPTION**

**1**

**HCY3x36x1-1/2**

**Cylinder, Rear Push Gate**

**2**

**HCY4x16x2**

**Cylinder, Raise and Lower**

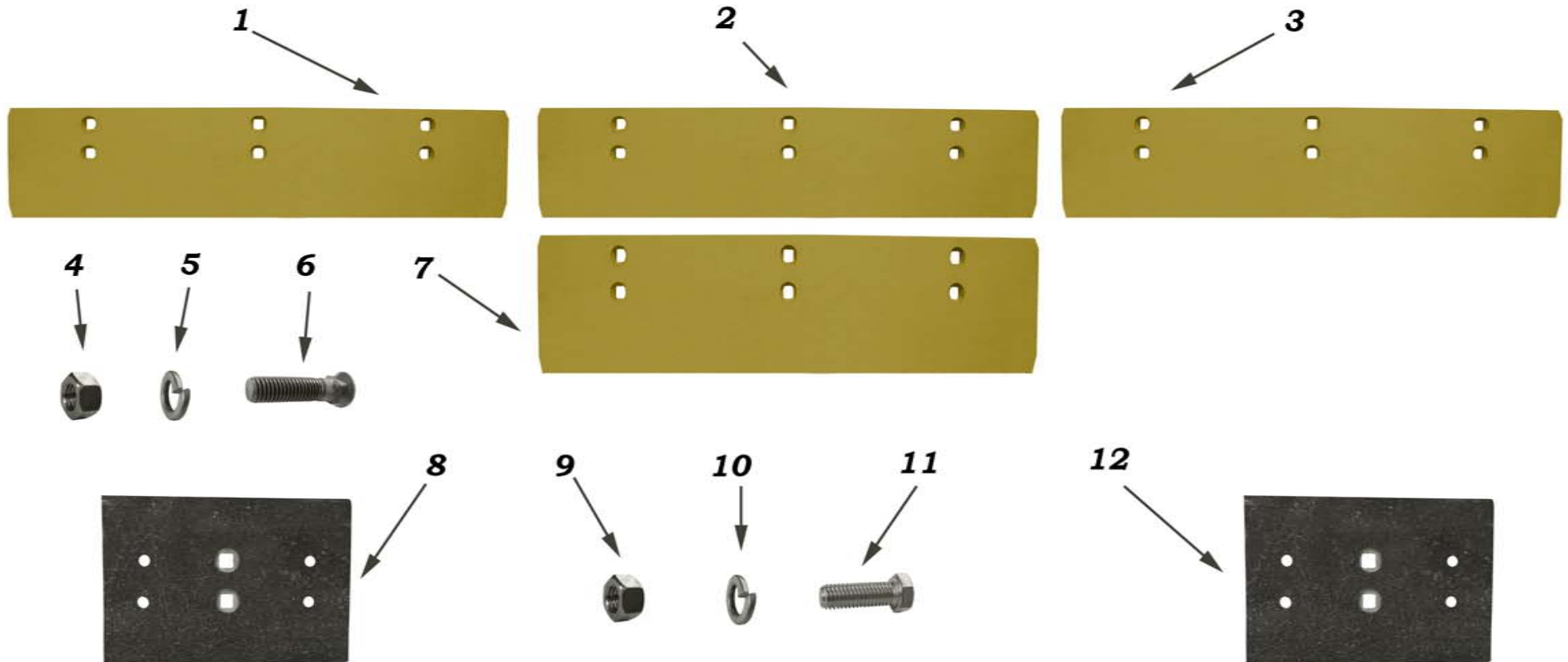
**3**

**HCY4x12x2**

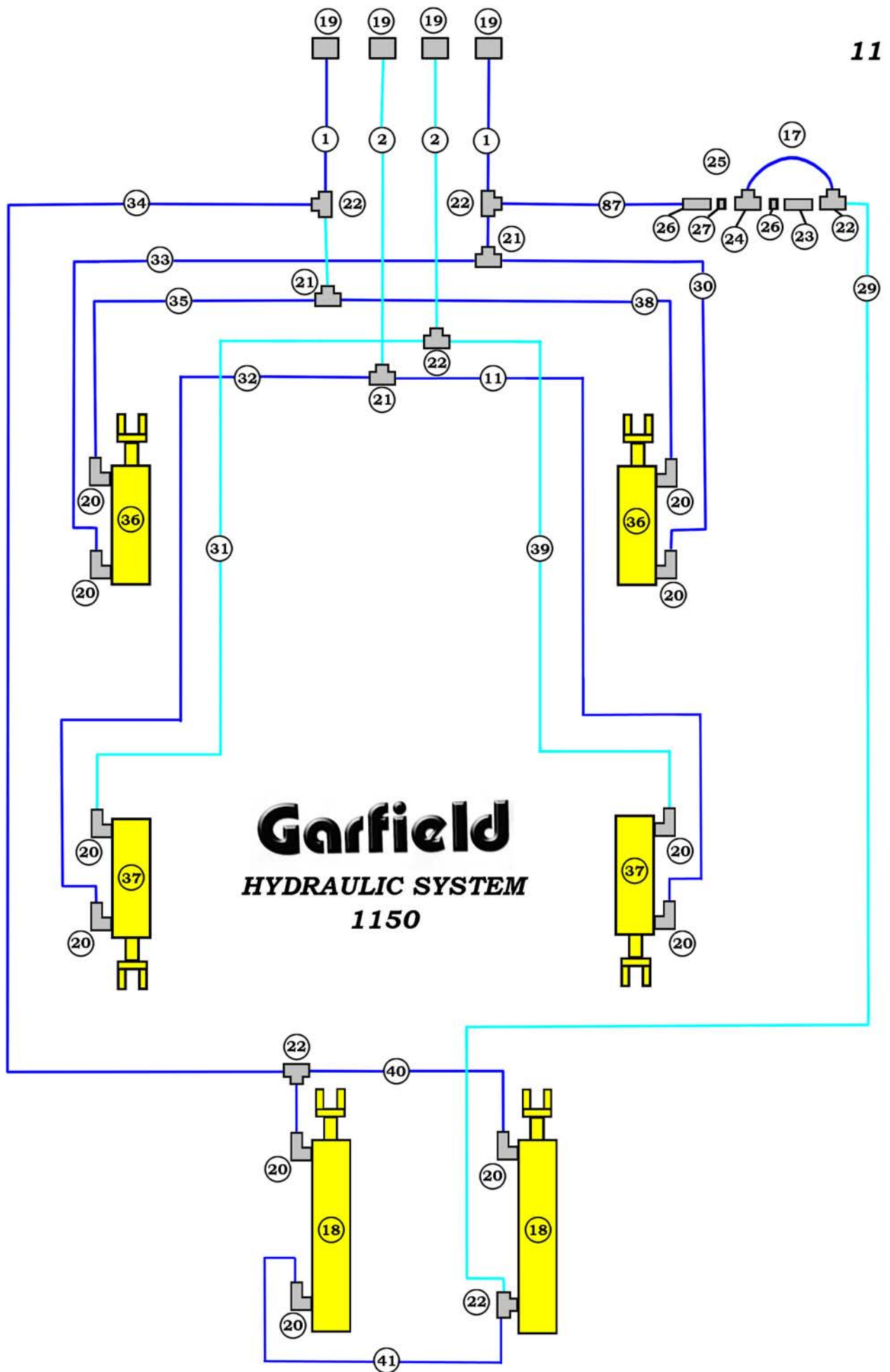
**Cylinder, Front Lift Gate**

# Garfield

Replacable Blades, 1150



ITEM NO.	PART NO.	DESCRIPTION	ITEM NO.	PART NO.	DESCRIPTION
1	GARB3x8	Blade 3/4x8x36	7	GARB3x10	Blade 3/4x10x36
2	GARB3x8	Blade 3/4x8x36	8	GASWBN	Side Wear Blade
3	GARB3x8	Blade 3/4x8x36	9	BNT12	Nut 1/2
4	BNT58	Nut 5/8	10	BLW12	Lock Washer 1/2
5	BLW58	Lock Washer 5/8	11	BHC12x134	Bolt 1/2x1-3/4
6	BPB58x212G8	Bolt 5/8x2-1/2	12	GASWBN	Side Wear Blade

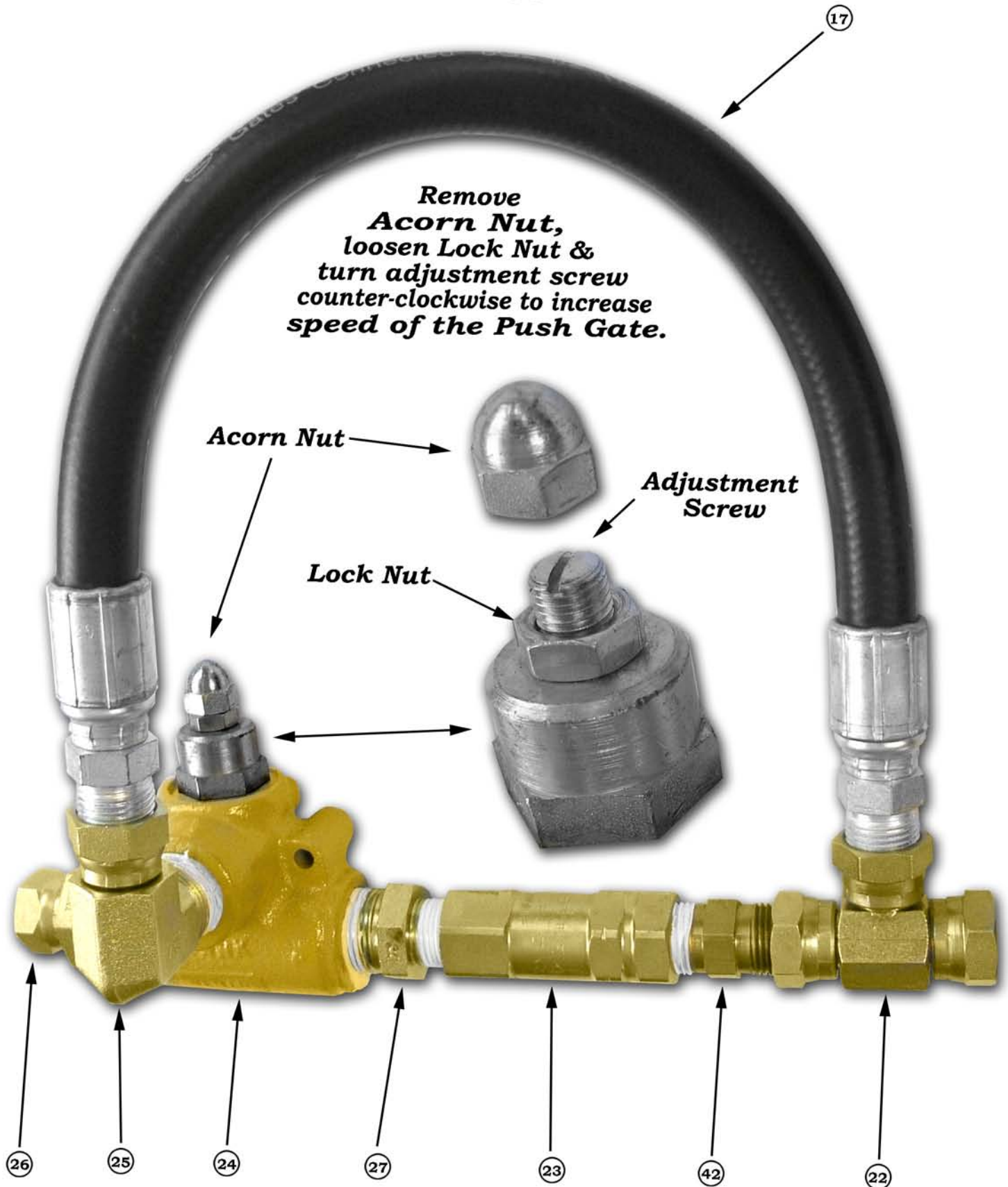


# Garfield

## HYDRAULIC PARTS

### 1150

12

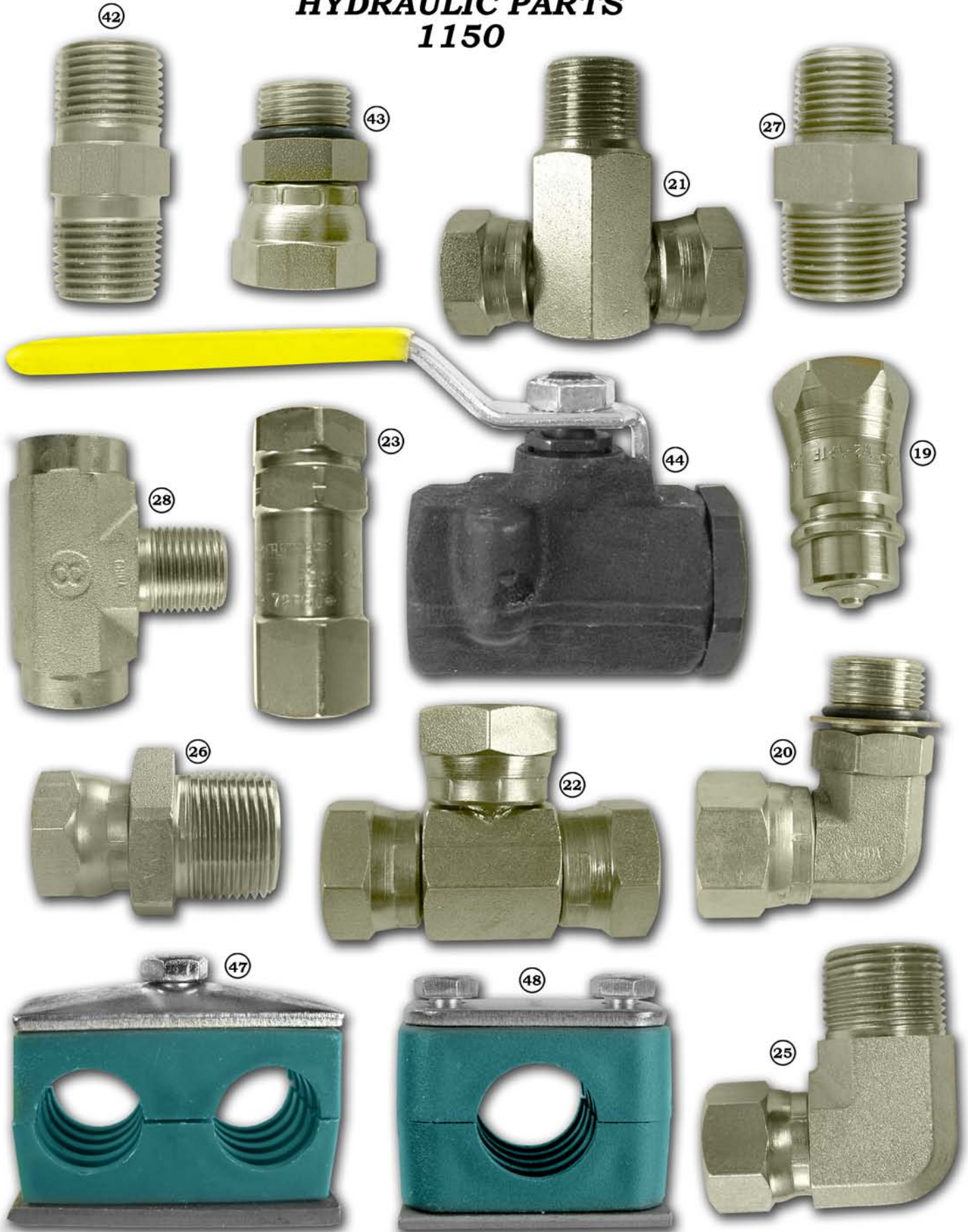


# Garfield

## HYDRAULIC PARTS

### 1150

13



# Garfield

## HYDRAULIC PARTS

### 1150

14

1.	HS12X132	Hose, 1/2 x 132
2.	HS12X156	Hose, 1/2 x 156
11.	HS12X210	Hose, 1/2 x 210
17.	HS12X20	Hose, 1/2 x 20
18.	HCY3X36X112	Cylinder, 3 x 36 x 1 1/2
19.	HEPP	Pioneer, 1/2 Female
20.	HMFS912	90 Degree, 1/2 M x 1/2 FM Swivel
21.	HTFM12	Tee, FM 1/2
22.	HTF12	Tee, FM 1/2
23.	HCV12	Check Valve
24.	HV34	Relief Valve
25.	HMFS934	90 Degree x 3/4MP x 1/2FM Swivel
26.	HMFS12	3/4M x 1/2FM Swivel
27.	HM1234	Adapter, 3/4MP x 1/2MP
28.	HTFM12	Adapter, 1/2MP x 1/2FP Tee
29.	HS12X216	Hose, 1/2 x 216
30.	HS12X155	Hose, 1/2 x 155
31.	HS12X200	Hose, 1/2 x 200
32.	HS12X212	Hose, 1/2 x 212
33.	HS12X160	Hose, 1/2 x 160
34.	HS12X234	Hose, 1/2 x 234
35.	HS12X142	Hose, 1/2 x 142
36.	HCY4X12X2	Cylinder, 4 x 12 x 2
37.	HCY4X16X2	Cylinder, 4 x 16 x 2
38.	HS12X150	Hose, 1/2 x 150
39.	HS12X201	Hose, 1/2 x 201
40.	HS12X52	Hose, 1/2 x 52
41.	HS12X98	Hose, 1/2 x 98
42.	HM12	Adapter, 1/2MP x 1/2MP
43.	HMBFS12	Adapter, 1/2MB x 1/2F Swivel
44.	HBV12	Ball Valve, 1/2 Carbon Steel
45.	HTCT34	Hyd. Tube Clamp, Twin 3/4ID for 3/8 hose
46.	HTCS34	Hyd. Tube Clamp, Single 3/4ID for 3/8 hose
47.	HTCT78	Hyd. Tube Clamp, Twin 7/8ID for 1/2 hose
48.	HTCS78	Hyd. Tube Clamp, Single 7/8ID for 1/2 hose
87.	HS12X30	Hose, 1/2 x 30