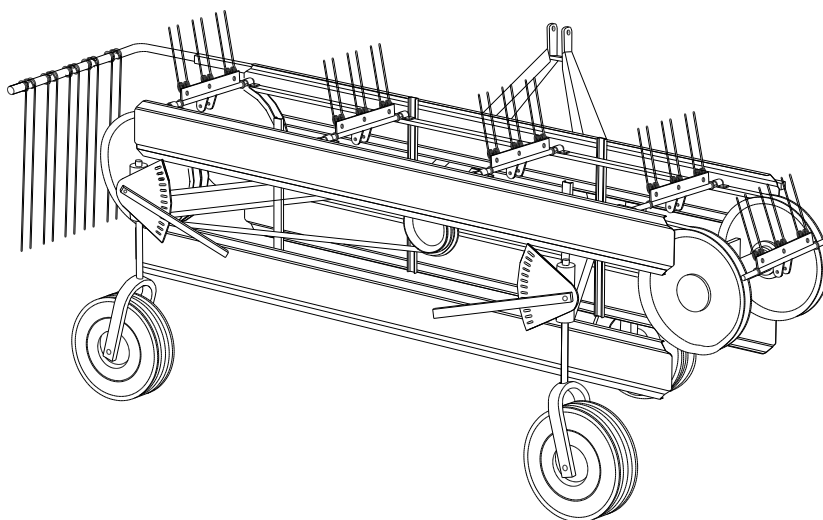




OPERATORS MANUAL AND PARTS BREAKDOWN



Belt Rake



INDEX

	Page
1 GUARANTEE	3
2 SAFETY RULES	3
3 DESCRIPTION OF THE BELT-TYPE WINDROWER AND SPECIAL LABELS	4
4 COUPLING TO THE TRACTOR	6
5 CARDAN COUPLING	6
6 BEGINNING WORK	7
7 ROAD TRANSPORT	8
8 PERIODIC MAINTENANCE	9
9 TRANSPORT ON LORRY	9
10 CASTING OFF THE MACHINE	10
11 SPARE PARTS	11

**WARNING!**

Before starting any operation read this operator's handbook.

To avoid hazards, all people who supervise, use, control and carry out maintenance and repairs on the machine must carefully read and observe these operating instructions.

It is essential that the directions given in this handbook are observed, as the manufacturer shall disclaim any liability whatsoever in case of the user's negligence or failure to observe the written instructions.

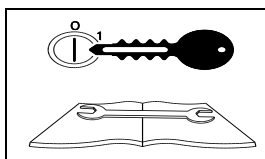
1 - GUARANTEE

The guarantee covers a
period of one year from the date of delivery.
On delivery, check that the machine has not been damaged in transit and
that all the accessories have been included.
Any claims must be sent in writing to Da Ros S.n.c.

2 - SAFETY RULES

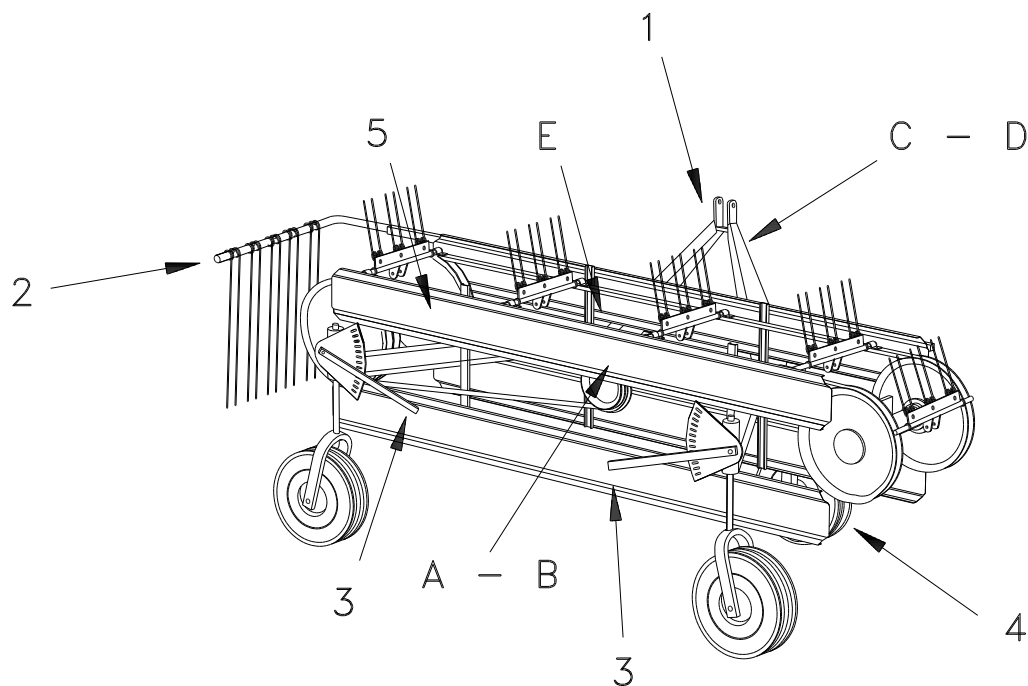
Only competent and adult people, who are aware of hazards, are allowed
to set the machine to work.

The machine must only be used for windrowing and tedding.



All operations must be performed with the tractor shut down and the machine set firmly on the ground.

3 - DESCRIPTION OF THE BELT-TYPE WINDROWER AND SPECIAL LABELS

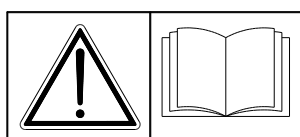


- 1 Three-point linkage
- 2 Hay stopper
- 3 Adjustment bar
- 4 Third wheel
- 5 Guards

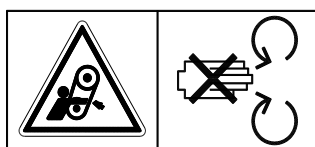
The belt-type windrower is manufactured in three

MODELS	WEIGHT	OVERALL-DIMENSIONS	WORKING-SPEED
D150	185	180	18

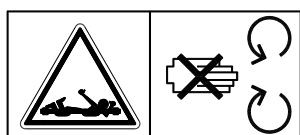
Each machine is provided with the following labels, which are an integral part of the machine. They can be ordered as spare parts in the event they become detached from the machine.



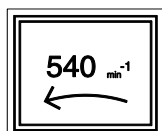
A Read the operator's handbook carefully



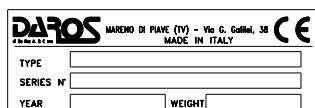
B Do not remove the chain transmission guard



C Caution, do not approach the cardan during operation

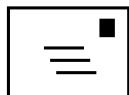


D Max. RPM's 540



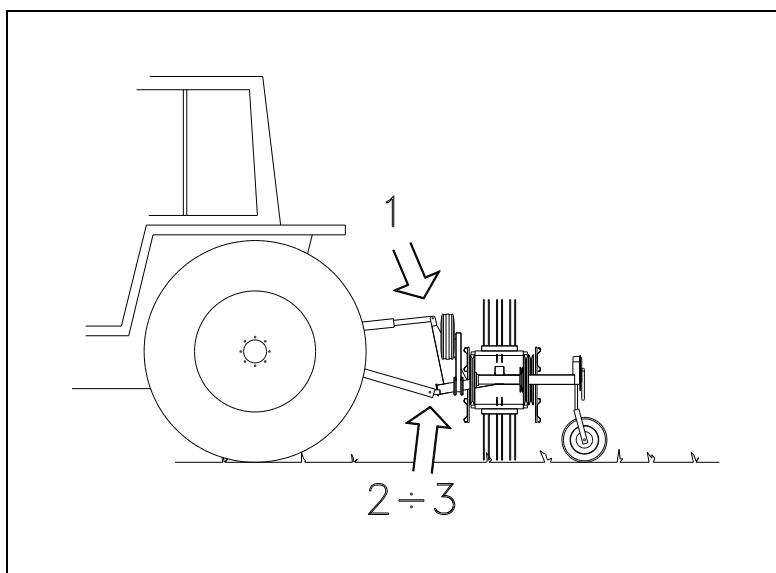
E Rating plate

(These details must always be given when ordering spare parts)



**4 - COUPLING TO
THE TRACTOR**

Carry out this operation on a flat surface.
Don't forget to shut the tractor down every time
you get off.



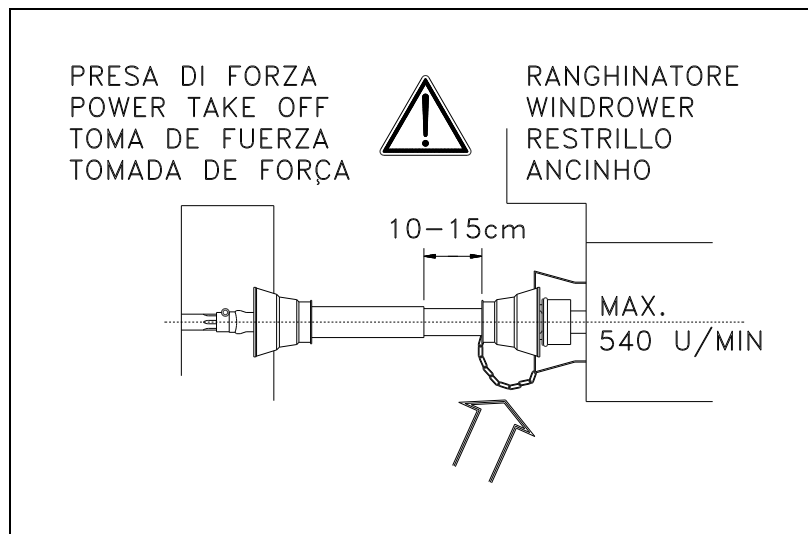
Coupling must be done as shown in the above
picture. Remember to lock the three points with
the special spring pins provided with safety
devices.

After coupling remember to raise the third
wheel upwards.

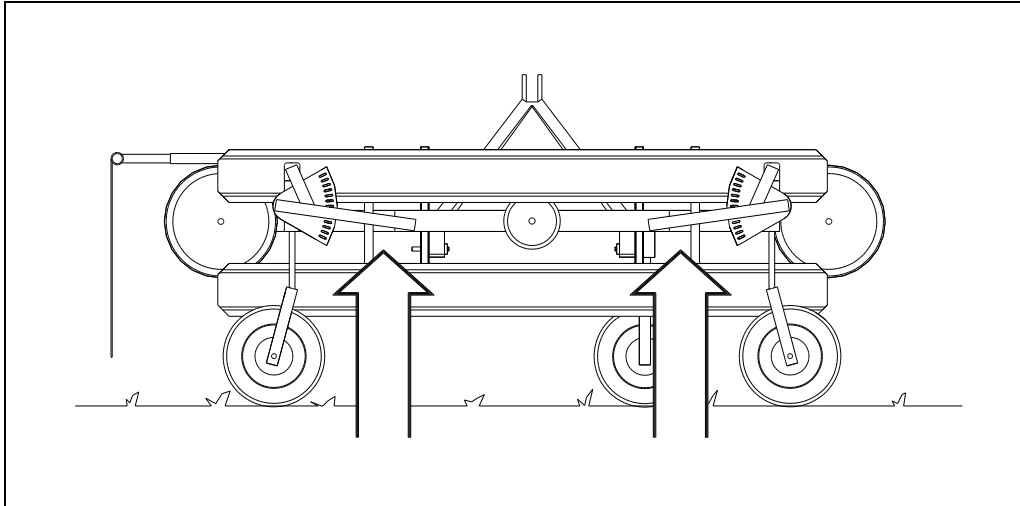
5 - CARDAN



Carry out all operations with protective gloves on
and the tractor shut down.



The engaged cardan must comply with EC standards and feature guards and a fixing chain.
Insert the cardan and make sure it is engaged properly.
Fix the safety chain to the protective cap of the machine.
Leave the cardan loose by at least 10 cm/4" so as not to cause any damage. (see drawing).



- With the two bars above the wheels, adjust the windrower's work surface in such a way that the teeth almost touch the ground.
- Pull out the hay stopper until it reaches the required width and then lock it in place with the catch.
- Proceed at a speed of around 18 km/h - 11 mph.
- The belt-type windrower can also work in reverse.

7 - ROAD TRANSPORT



When travelling on a road it is essential to strictly comply with the highway code in force in the country.

The manufacturer declines any liability if the user fails to comply with these rules.

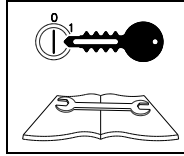
- Raise the machine joined to the tractor on three points upwards.
- Overall dimensions for transport width x height:

D150 185x140h

D180 215x140h

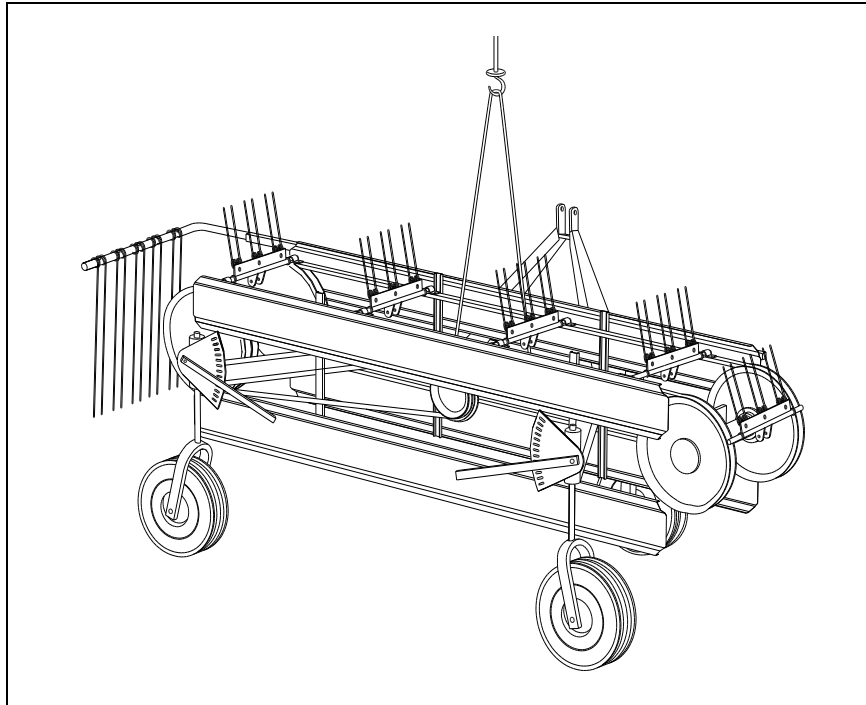
D210 260x1,40 cm /8.4

8 - PERIODIC MAINTENANCE



Carry out all operations with the tractor shut down and the agricultural machine set on the ground.

-
- Check every time the windrower is used that the belts have not slipped and the teeth supports are correctly perpendicular to the belts.
- Change the bushings fixed on the chain if they are worn out.
- Grease the struts of the wheels.



To load the belt-type windrower with a crane, insert a belt straddling the power take off and the frame, fix the two ends of the belt to the crane hook.

10-CASTING OFF THE MACHINE

When the machine is no longer used, it must be entrusted to companies specialised in iron recovery and in the disposal of all nylon components and belts.

SPARE PARTS BELT RAKE

D150

TABLE 1.5 2013

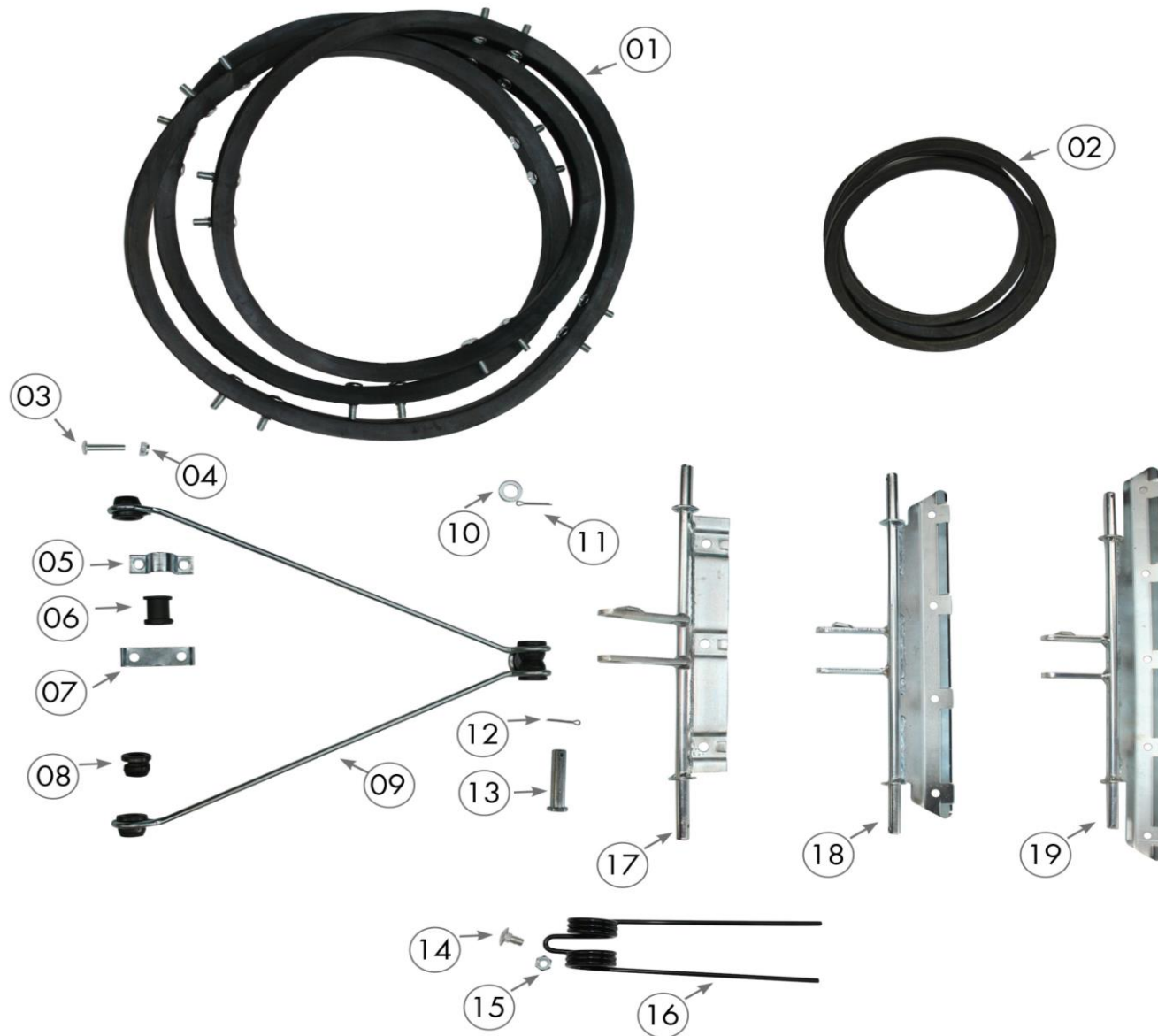


TABLE 1.5		
2013		
POS.	CODE	DESCRIPTION
01	9500014	BELT WITH SCREW D120
	9500011	BELT WITH SCREW D148
	9500012	BELT WITH SCREW D180
	9500013	BELT WITH SCREW D210
02	9500000	BELT C70-D120
	9500016	BELT C83-D150
	9500017	BELT C99-D180
	9500018	BELT C114-D210
03	9130807	SCREW TT TBL M8X35
04	9110008	NUT SMA
05	7500220	BRIDGE
06	9500110	NYLON SUPPORT
07	7500210	PLAT
08	9500100	NYLON BUSH
09	6900060	DOUBLE TENSION ROD
	6900065	TENSION ROD WHIT BUSH
10	9150016	WASHER 24X14X1,5
11	9106032	PIN D.3,2X25
12	9106032	PIN D.3,2X25
13	9140001	PIN D.14
14	9131004	SCREW TTQ 10MAX20
15	9100010	NUT 10MA ZN
16	6900070	SCREW DM 6 BLACK
	7500235	4 TEETH SUPPORT
18	7500235	4 TEETH SUPPORT
19	7500237	5 TEETH SUPPORT

TABLE 1.6 2013

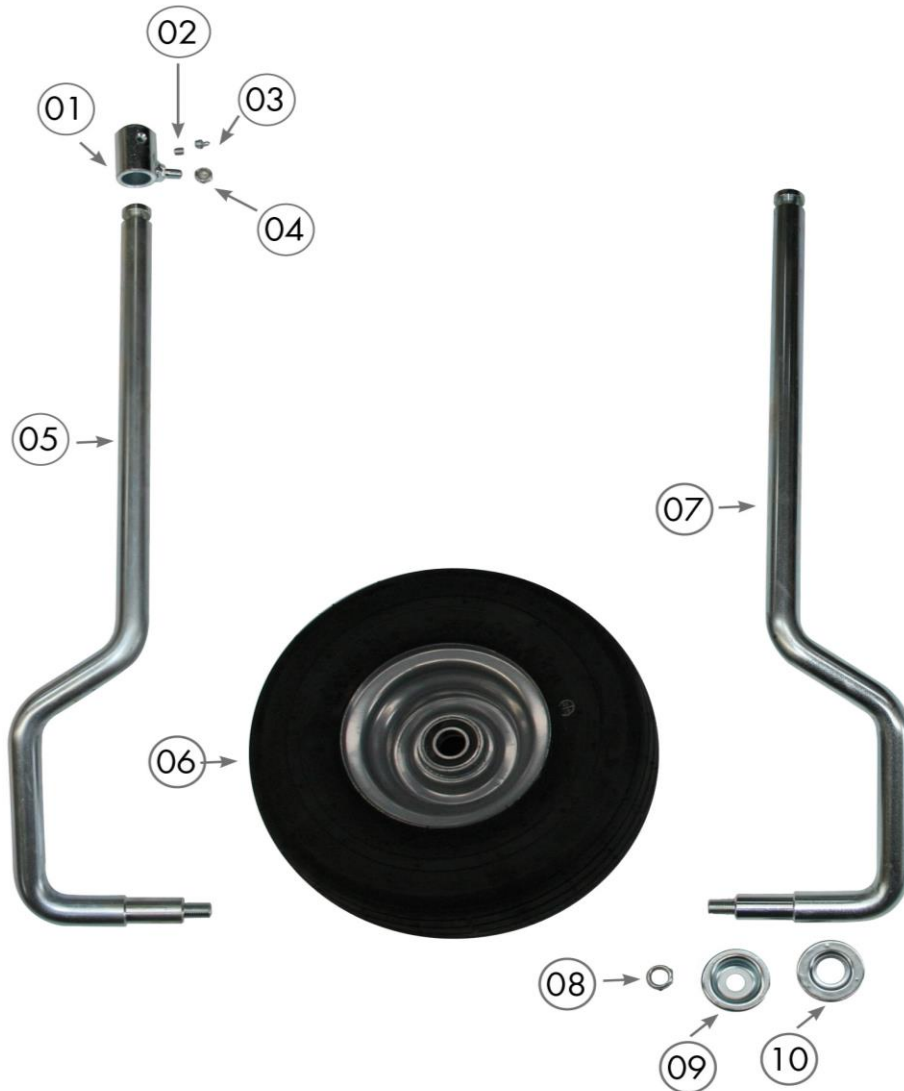


TABLE 1.6

2013

POS	CODE	DESCRIPTION
01	7500075	SPECIAL PLUG
02	9106010	EXAGON SET SCREW
03	9105003	GREASE
04	9110012	NUT 12MA
05	7500018	SUPPORT DM.30 L FOUR WHEEL15/600/6
06	8910006	WHEEL15/600/6 COMPLETE
07	7500015	SUPPORT DM.30 R. FOUR WHEEL15/600/6
08	9110012	NUT 12MA
09	8910107	EXTERNAL WHEEL PROTECTION
10	8910106	INTERNAL WHEEL PROTECTION
11	6900112	PIN DM. 10X56□
12	7500141	WHEEL SUPPORT NEW 40X40X3X825
13	8910208	WHEEL 300X60 PVC F25 MM
14	9110016	NUT 16MA
15	9150042	WASHER 17X30X3

TABLE 1.7 2013

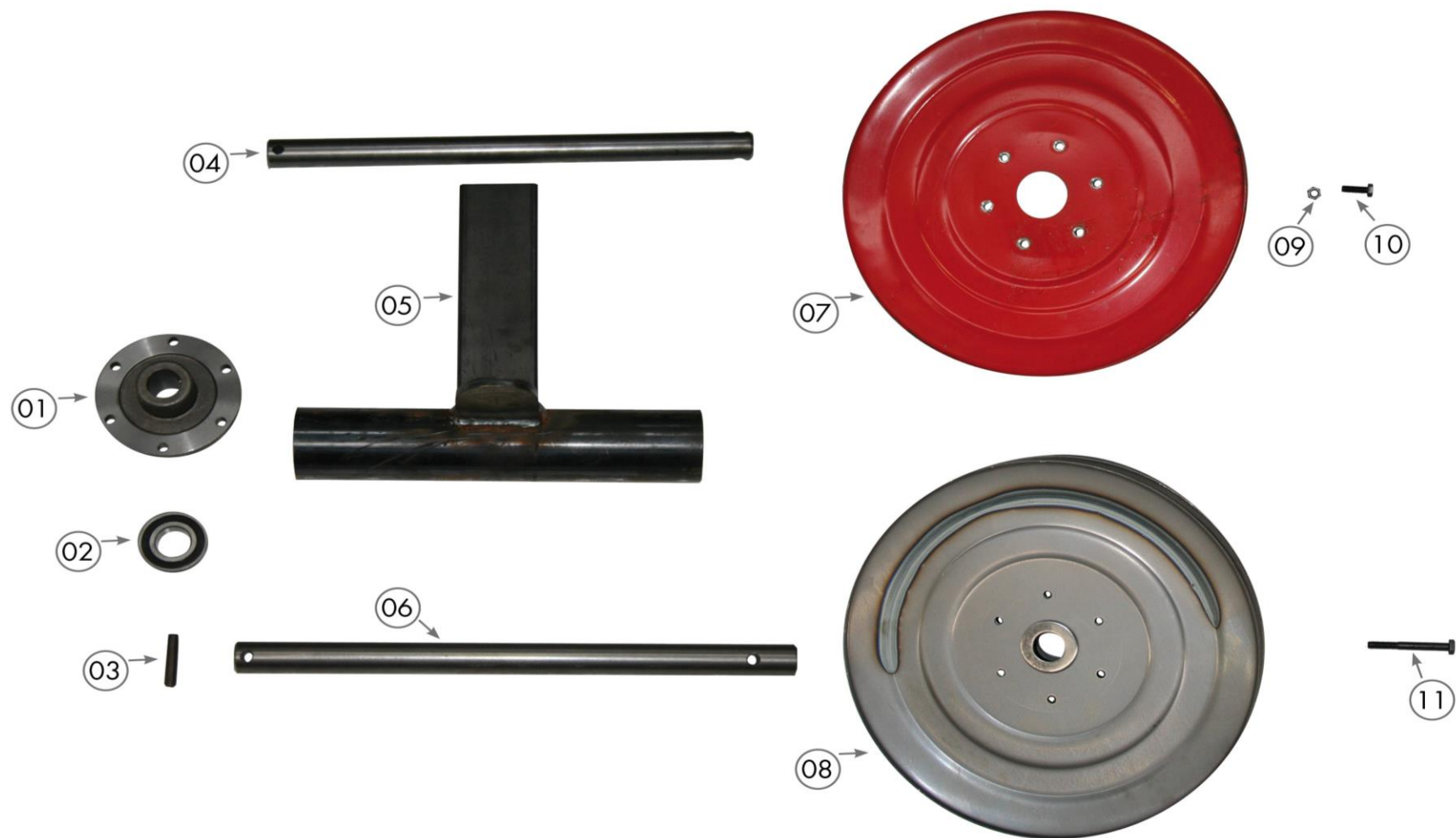


TABLE 1.7		
2013		
POS.	CODE	DESCRIPTION
01	7500190	FLANGE
02	9016206	BEARING 6206ZZ
03	9141010	PIN SPIROL 10X50
04	7500185	PULLEY'SHAFT
05	7500170	PULLEY' SUPPORT
06	7500180	PULLEY'SHAFT
07	7500110	PULLEY MM. 400
08	7500120	PULLEY 2G MM.400
09	9100008	NUT 8MA ZN
10	9110805	SCREW TF M8X25
11	9100814	SCREW PF GR M8X70

TABLE 1.8 2013

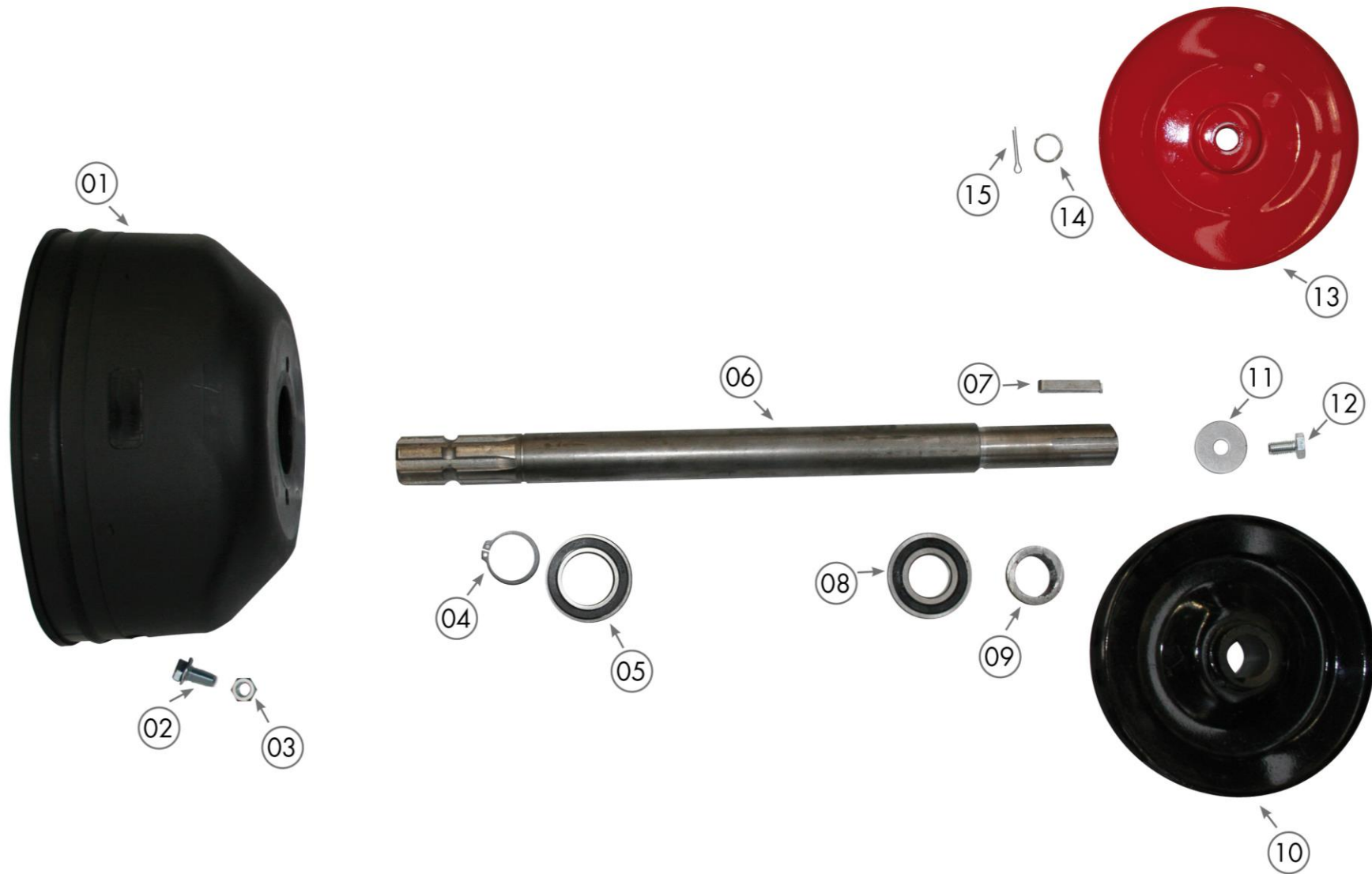


TABLE 1.8		
2013		
POS.	CODE	DESCRIPTION
01	9500207	PROTECTION SHAFT
02	9130806	SCREW TE X10X20 WITH WASHER
03	9100010	NUT 10MA ZN
04	9130011	SEEGER
05	9016007	BEARING
06	7500131	SHAFT
07	9160021	KEY 8X8X35
08	9016206	BEARING
09	7500081	SPACER
10	7500101	PULLEY
11	9150012	WASHER
12	9101006	SCREW
13	7500090	PULLEY
14	7500080	SPACER
15	9106031	PIN D.3X2.5

TABLE 1.9 2013

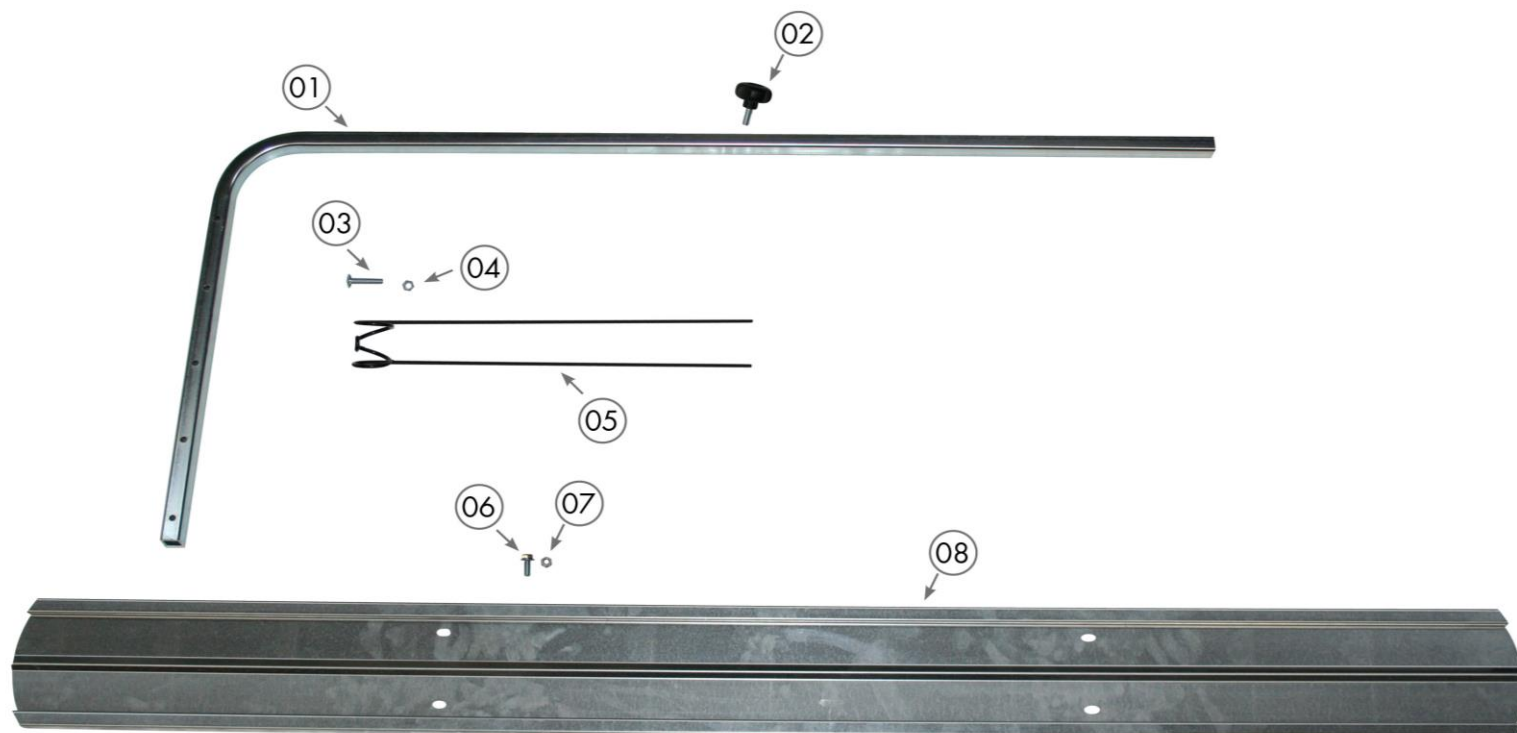


TABLE 1.9		
2013		
POS	CODICE ARTICOLO	DESCRIPTION
01	7500200	HAY STOPPER
02	9140002	HANDLE SCREW M10
03	9130808	SCREW TBL 8MAX40
04	9110008	NUT 8MA
05	6900030	HAY STOPPER SPRING
06	9100805	SCREW M8X20 WITH WASHER
07	9110008	NUT 8MA
08	7500025	PROTECTION D120
	7500020	PROTECTION D150
	7500030	PROTECTION D180
	7500040	PROTECTION D210

TABLE 1.10 2013

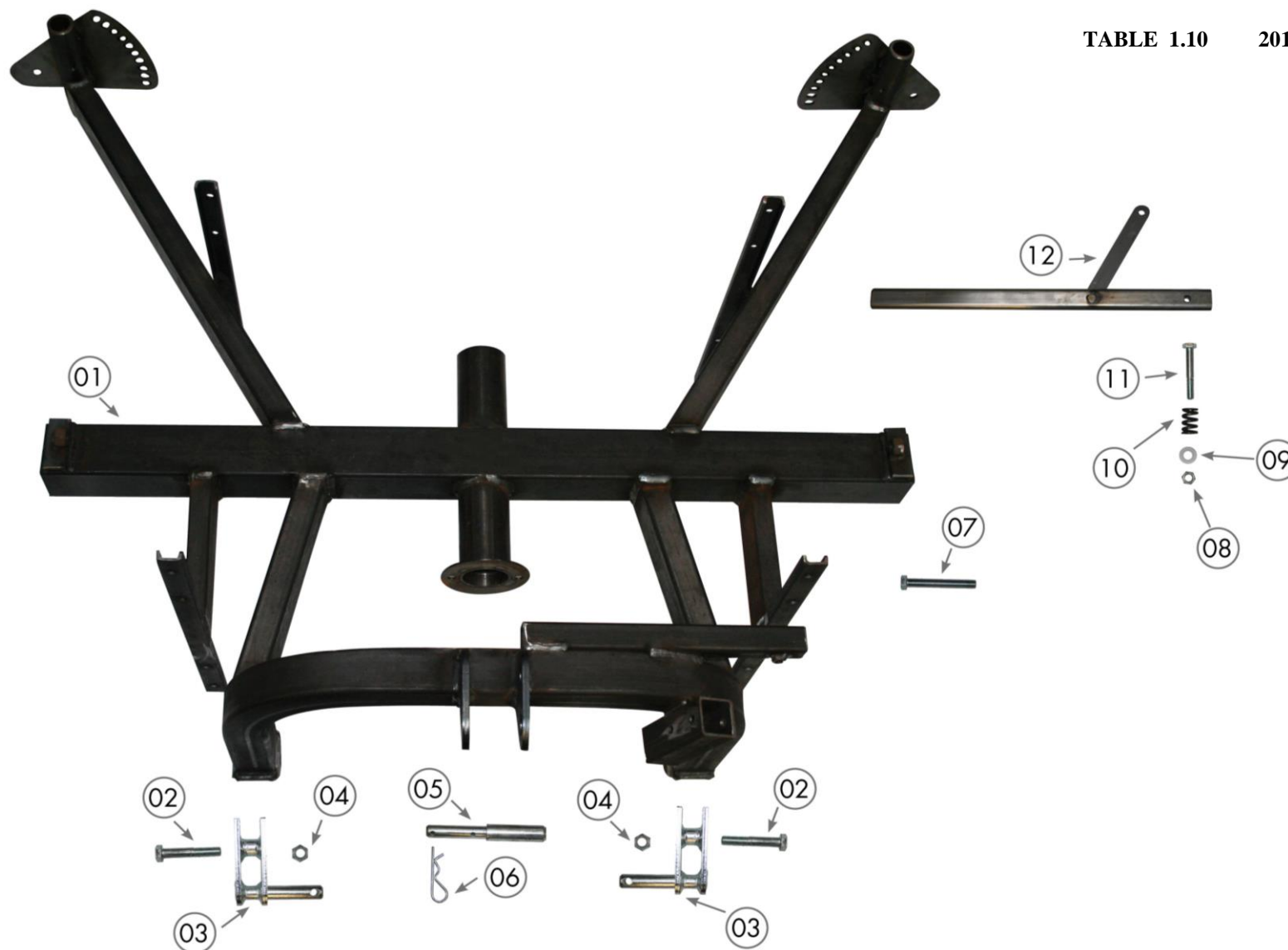


TABLE 1.10

2013

POS.	CODE	DESCRIPTION
01	7500255	FRAME D120
	7500251	FRAME D150
	7500260	FRAME D180
	7500270	FRAME D210
02	9101617	SCREW M16X90 PF
03	7500160	BRACHET
04	9110016	NUT 16MA
05	6500375	UNIVERSAL PIVOT
06	6900123	SPLIT PIN
07	9111620	SCREW M16X120
08	9110012	NUT 12MA
09	9150020	WASHER 14X29X1.5
10	6900070	SPRING
11	9101216	SCREW M12X80 PF ZN
12	7500050	ARMS