

OPERATOR'S MANUAL

Grader Blade



Put DIRT in its place.

MODEL

GGB1200RS



Model GGB 1200RS

WELCOME: You are now the owner of one of the most versatile machines for landscaping, terracing and earth moving. In years to come, your farm or ranch operation will benefit from the efficiency, utility, and economy provided by the GARFIELD Grader Blade

Please take time to be sure that you understand the proper maintenance and safe operation of this machine. Read this operator's manual carefully and you will get better results and service with fewer problems from your GARFIELD Grader Blade

GARFIELD, INC., provides warranty on each new machine sold. Be sure to fill out the warranty card and return it to GARFIELD, INC., within ten (10) days after delivery of your machine to be eligible for this warranty. If you did not get a warranty card with your machine, contact your Dealer to receive one. The completed warranty card must be on file with GARFIELD, INC., ENID, OK before warranty claims will be honored. GARFIELD, INC. will not provide warranty on any machine that has been altered or used for something other than its intended use.

GARFIELD, INC. reserves the right to make any changes, or add improvements to its products at any time without incurring any obligation to make such changes on previously manufactured equipment.

SAFETY

- 1. Do not lubricate, adjust, or repair when machine is in motion.***
- 2. Follow all laws when transporting on highways.***
- 3. Never allow personnel to ride on machine.***
- 4. All hydraulically elevated components must be blocked to prevent accidental lowering or just be lowered to the ground when adjustment or repairs are made.***
- 5. Keep all personnel a way from machine while it is being operated or being cycled.***
- 6. Drive slowly over rough ground, side hills, and around curves.***
- 7. OSHA requires that as a farm employer you meet certain requirements. Become familiar with and comply with those requirements.***
- 8. Be certain anyone who operates this machine understands all safety related items.***
- 9. Should hydraulic hoses and/or fittings be accidentally damaged, replace those components immediately for safe operation. Never open hydraulic components under pressure.***
- 10. Always put transport lock in while traveling down the road.***

SERVICE, MAINTENANCE, AND OPERATION

Model GGB1200RS

The machine should be greased every four hours or daily. Depending on usage.

***There are (16) different grease zerks on the machine.
4 on the swing cylinders, 2 on the tilt cylinder, 2 on the raise cylinder,
2 on the raise cylinder, 2 on the hinge pins, 2 on the blade swivel
bushings, 1 on the frame swivel bushing, and 1 each on the hubs.***

The wheel bearings should be repacked yearly.

Tire pressure should be checked and kept at minimum 50lbs. each.

Lug nuts should be checked periodically.

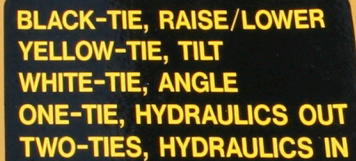
OPERATION Model GGB1200RS

Hook up to the tractor, cycle all hydraulics, Be sure to remove transport locks by raising the scraper with your hydraulics before operating.

The Garfield Grader Blade utilizes three hydraulic valves on the tractor, allowing it to function in three different directions. The Grader has the ability to raise to a clearance from bit to ground of 30 inches while lowering to a negative cut. It can tilt from side to side approximately 15 degrees to accomplish slope cuts and ditching. The third action is the swing of the blade approximately 45 degrees, left or right. All three of these functions can be done on the go, or while the grader is stopped.

Color coded tie straps and markers are attached at the tip end of the hoses to identify the tree pairs of hydraulic lines to the grader. Black tie is the raise and lower of the blade. White tie is the swing of the blade. Yellow is the tilt of the blade. The following decal is located on the tongue of the blade.

Hookup of the hydraulic hoses to the remote can be done in any way to suit individual needs. The following method is suggested: Raise/Lower of the blade to #1 valve. Swing of the blade to #2, and tilt to #3. Hook up so that push of the valve is lower and pull of the valve is to raise the blade.



**BLACK-TIE, RAISE/LOWER
YELLOW-TIE, TILT
WHITE-TIE, ANGLE
ONE-TIE, HYDRAULICS OUT
TWO-TIES, HYDRAULICS IN**

Warning! Before angling the blade, make sure the grader is taken out of transport position and be certain that the cylinder stops are removed before use!

Be patient for the first few hours of learning to operate the grader. Time and experience will produce expert results. Any type of blade machinery has the tendency to create a "washboard" effect if grading is done at too much speed. Slow down and do the job right. The second tendency is to side draft if the blade is cutting deep and enough power is applied. Practice centering the cut on the blade to balance the draft. Operating the grader at a higher speed may not get the job done quicker, and may provide less than quality results.

Garfield

WARRANTY

5

Under the conditions described herein GARFIELD, INC. will within 12 months from the date of purchase on agricultural designed the operated machinery, and 90 days for hire commercial machinery, supply or at GARFIELD'S option, repair any part manufactred and/or workmanship, upon receipt of the damaged part.

GARFIELD components manufactured by companies other than GARFIELD are warranted soley by those companies. Those components include but are not limited to tires, rims belts, hoses, and hydraulics.

GARFIELD will not warrant any part which in GARFIELD'S opinion has failed due to modifications, abuse, misuse, improper maintenance, or due to normal wear.

GARFIELD will pay no further expenses, including but not limited to transportation, labor and loss of time income, or crops.

This warranty is made expressly in place of all other guarantees or warranties, expressed or implied.

**FORWARD**

This manual is written as a guide for owners and operators of the GARFIELD equipment, read it carefully and follow the suggestions which are made. Keep this manual in a convenient place for quick, easy reference and use it whenever questions come up.

Fill in the following information now for future reference and convenience. Always give this information to your Dealer when ordering new parts, or asking for help. Your GARFIELD dealer is your primary source for information, however, if at any time it is necessary for you to write directly to GARFIELD, INC. for additional information, give the model and serial number of your machine and as much descriptive information as possible. This will help us to do a better job of solving your problem and/or getting parts to you.

MODEL NO. **GGB1200**_____

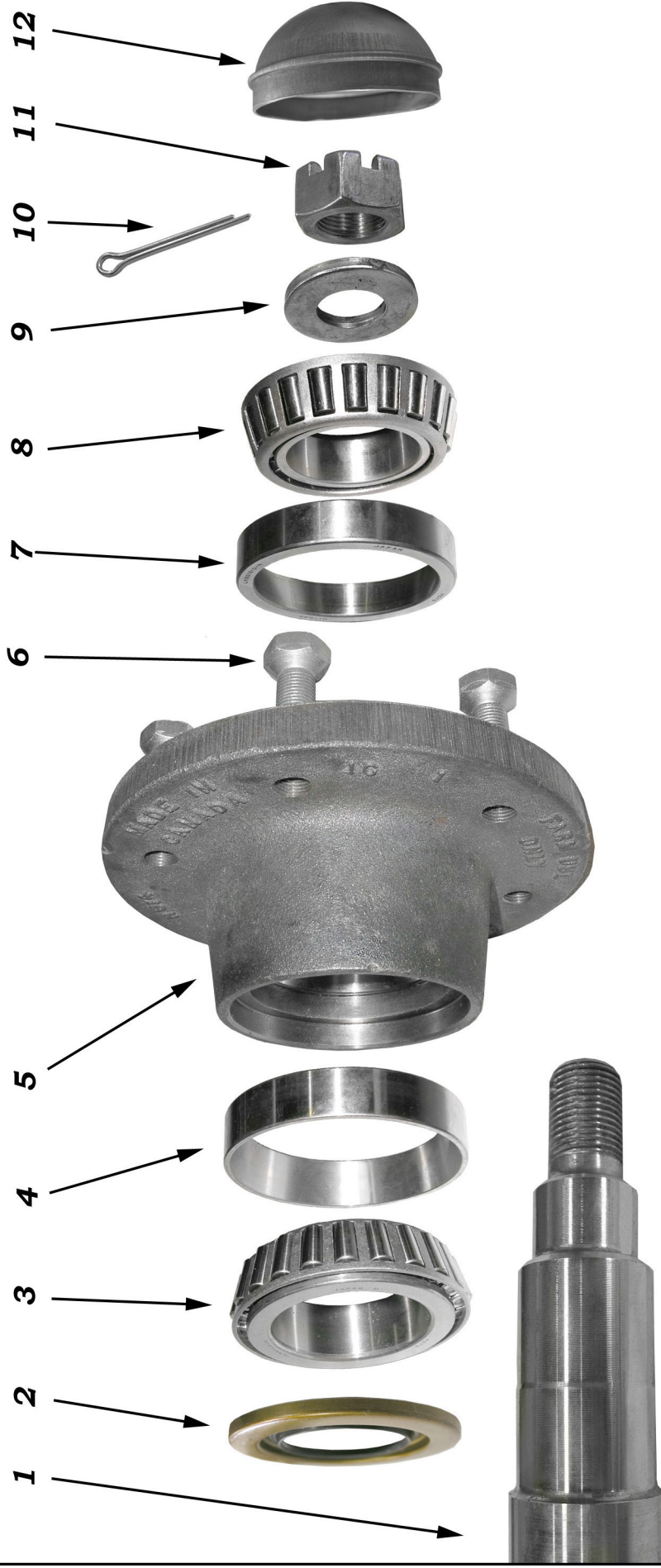
SERIAL NO. _____

DATE OF PURCHASE _____

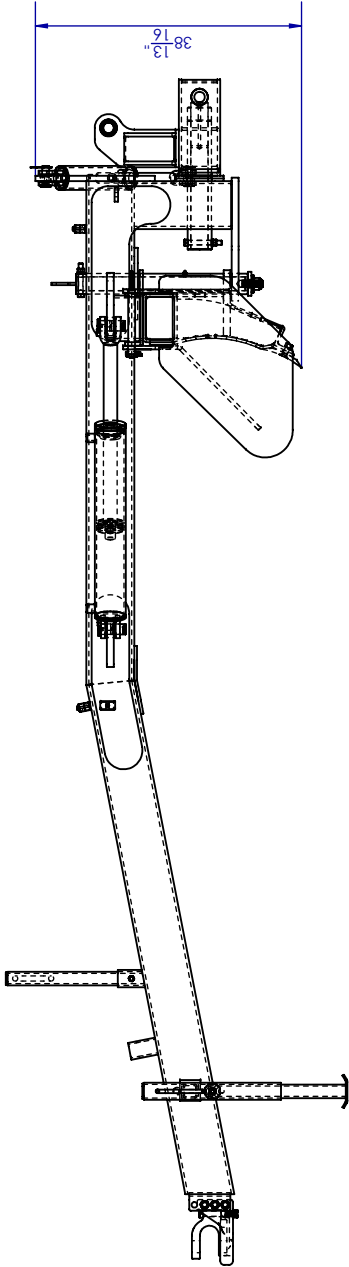
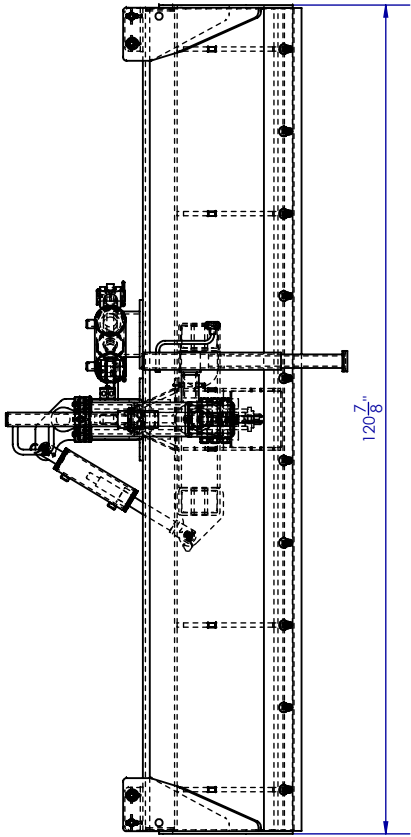
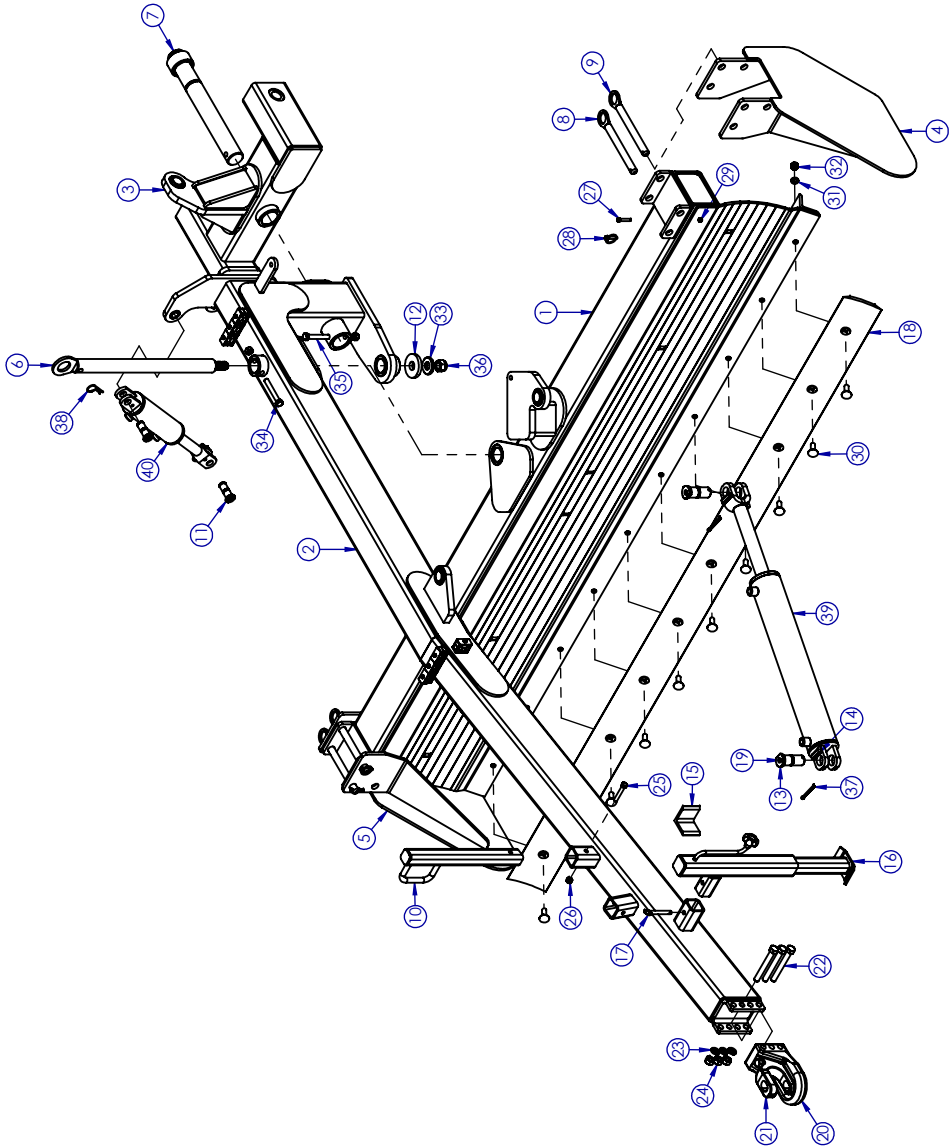
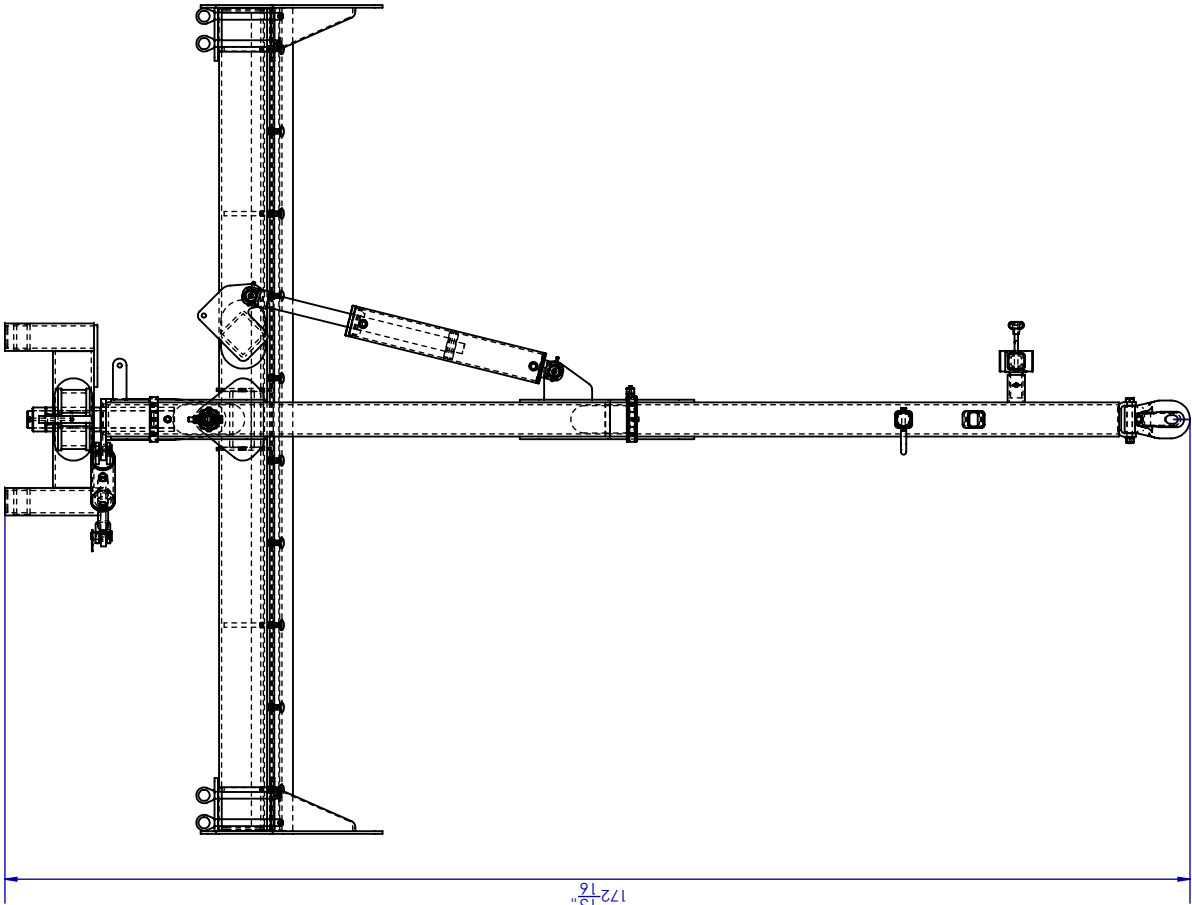
NAME AND ADDRESS _____

It is the policy of GARFIELD, INC. to make improvements on our product. GARFIELD, INC. reserves the right to make these improvements without incurring any obligation to those machines already in the field. Years of research and development combined with experience gained through close contact with operators has been drawn upon designing your products.

GARFIELD, INC.
500 W. SOUTHGATE
ENID, OK 73703
580-233-1410
800-382-4478



ITEM NO.	PART NO.	DESCRIPTION	ITEM NO.	PART NO.	DESCRIPTION
1	WSP61412-----S614-A91SKFC	Spindle	7	WOR614-----48510	Outer Race
2	WS614-----CR#SE16	Seal	8	WOB614-----LM48548	Outer Bearing
3	WIB614-----LM603049	Inner Bearing	9	WWS614-----WA17	Washer
4	WIR614-----603011	Inner Race	10	WCP614-----	Cotter Pin
5	WHB614-----	Hub, 6-Bolt	11	WSN614-----	Spindle Nut
6	WST614-----	Stud Bolt	12	WDC614-----	Dust Cap



NOTAS:

- 1.- El producto AB10010000E se compone de los ITEMS del 1 al 15.
- 2.- El componente AB12011000W es de color negro.
- 3.- Los demás componentes del producto AB10010000E deben pintarse con pintura EPOXICA ACRIL. AMARILLO CAT.

UNLESS OTHERWISE SPECIFIED		GARFIELD MATERIAL SPECIFICATION:	
DIMENSIONS IN INCHES		SEVERAL	
.X	±0.060	WEIGHT:	SURFACE: 36015.6276 in
.XX	±0.030	1979.4827 pounds	
.XXX	±0.015	TREATMENT:	FINISH:
FRACTIONAL	±1/16	SCALE: 1:28	SHEET: 1 FROM 1
ANGLES	±1°	DESIGNED BY: GARFIELD EQUIPMENT	

REVIEW	DATE	SYN	DESCRIPTION	REVIEWED BY	APPROVED BY
R01	06/01/2016	A	WAS ADDED	NICOLAS AZORIN	NICOLAS AZORIN
R00	24/07/2010	-	FIRST EMISSION	NICOLAS AZORIN	NICOLAS AZORIN

ITEM	PART #	DESCRIPTION	QTY.
40	4110-4045-01	3" X 8" X 1-1/2" STROKE HYD. CYL. (HCY3X8X112)	1
39	4110-4112-01	4" X 24" X 2" STROKE HYD CYL (HCY4X24X2)	4
38	4270-1004-01	#6 HITCH PIN CLIP FOR HYD. CYLINDER (HPC)	2
37	4260-1148-01	5/16" X 3" COTTER PIN (FCP516X3)	2
36	4220-8018-51	1" NYLOCK HEX NUT 8 NC (BNT1NL)	1
35	4210-5400-01	5/8" X 5" HEX CAP BOLT 11 NC G5 (BHC58X5)	1
34	4210-5396-01	5/8" X 4-1/2" HEX CAP BOLT 11 NC G5 (BHC58X412)	1
33	4240-1033-06	WASHER FOR 80-8 HUB (WW80-8)	1
32	4220-1012-01	5/8" NUT 11 NC (BNT58)	12
31	4250-1028-01	5/8" LOCK WASHER (BLW58)	12
30	4210-5376-11	5/8" X 2" PLOW BOLT 11 NC G5 (BPB58X2G5)	10
29	4220-1002-51	5/16" NYLOCK HEX NUT 18 NC (BNT516NL)	2
28	4270-2004-01	PIN LINCCH 5/16" STD (HPL516)	2
27	4210-5082-01	5/16 X 2-18 UNC G5 HEX. BOLT	2
26	4220-1008-01	1/2" NUT - 13 UNC (BNT12)	1
25	4210-5268-01	1/2" X 3" HEX CAP BOLT G5 (BHC12X3G5)	1
24	4220-1014-01	3/4" HEX NUT 10 NC (BNT34)	3
23	4250-1032-01	3/4" LOCK WASHER (BLW34)	3
22	4210-8484-01	3/4" X 6" HEX CAP BOLT 10 NC G8 (BHC34X6G8)	9
21	4470-3216-00	HITCH CLEVIS (PPI-208VR)	1
20	4470-3102-00	BASE HITCH CAT. 3 (PP23XL)	1
19	4180-1030-14	1/8" GREASE ZERK (FGZ18)	6
18	4370-1100-00	GARFIELD REPLACEMENT BLADE - 10 (GRB10)	1
17	4270-6102-04	DROP LEG PIN (JDLP)	1
16	4190-1077-00	15" TRAVEL JACK 8000# (JK158)	1
A 15	AB16010010C	ANGLE FOR JACK	1
14	CA12010012C	LOCK FOR CYLINDER	2
13	DS99020001C	HINGE PIN	2
12	AB12010003C	FLAT WASHER	1
11	AB12010002C	HINGE PIN	2
10	AB12011000W	HOSES SUPPORT	1
9	AB12010900W	10" PIN ASSEMBLY	2
8	AB12010800W	9-3/4" PIN ASSEMBLY	2
7	AB12010700W	SWIVEL SHAFT ASSEMBLY	1
6	AB12010600W	CENTRAL SHAFT ASSEMBLY	1
5	AB12010500W	RIGHT SIDE ASSEMBLY	1
4	AB12010400W	LEFT SIDE ASSEMBLY	1
3	AB12010300W	SWIVEL ASEMBLY	1
2	AB12010200W	NECK ASSEMBLY	1
1	AB10010100W	10" MOLDBOARD ASSY	1

THE INFORMATION CONTAINED IN THE DRAWING IS EXCLUSIVE PROPERTY OF GARFIELD EQUIPMENT. ISSUED IN STRICT CONFIDENCE AND SHALL NOT, WITHOUT THE PRIOR WRITTEN PERMISSION OF GARFIELD EQUIPMENT BE REPRODUCED OR TRANSMITTED IN ANY FORM OR BY ANY MEANS, ELECTRONIC, MECHANICAL, PHOTOCOPYING, RECORDING, OR BY ANY INFORMATION STORAGE AND RETRIEVAL SYSTEM, EXCEPT THE MANUF- ACTURE OF ARTICLES FOR GARFIELD EQUIPMENT.

DESCRIPTION: 1000 GRADER BLADE. MAIN FRAME

REVIEW:

R00

PART NUMBER:

AB10010000A

SIZE:

B



