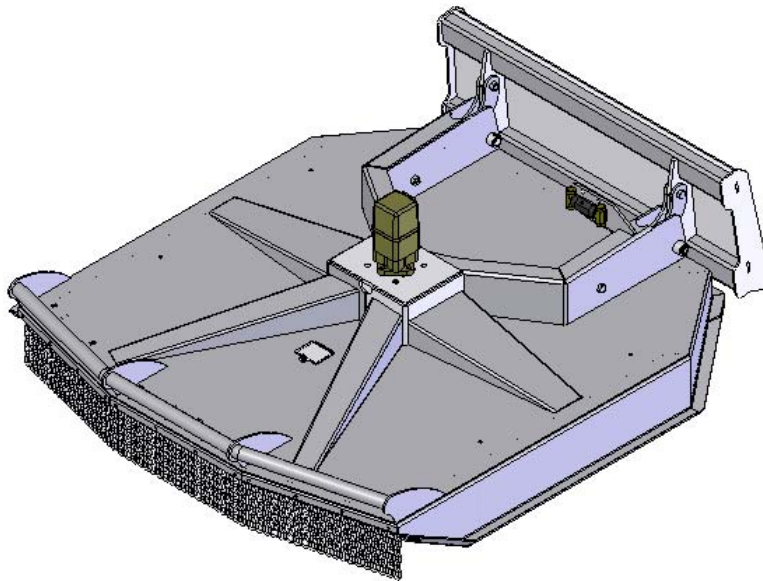


THRIFTY Cutter

Skid Steer Thrifty® Cutter



M K Martin Enterprise Inc
3950 Steffler Rd
Elmira On. Ca. N3B 2Z3

Tel 519-664-2752
Fax 519-664-3695
E-mail sales@mkmartin.ca

Introduction

Skid Steer Thrifty® Cutter

We want to thank you for acquiring our Thrifty® cutter. M K Martin Enterprise Inc. has been manufacturing cutters for many years and has now added a hydraulic powered cutter for a skidsteer loader. This cutter is designed specifically for skidsteer work. With regular service and maintenance it will provide you with many years of reliable service. The Thrifty® Cutter will cut down over grown brush that is not too large (the thickness of a finger), corn stalks, tall grass etc. With the floating link in the hitch plate the front of the cutter will float up and down over objects.

Please read and understand these instructions before operating this piece of equipment!

Please take a few minutes and fill out the warranty and registration form on the next page and return it for our records. To comply with privacy laws these records will not be shared or used outside of warranty purposes.

Warranty and Limitation Of Liability

All equipment is sold subject to mutual agreement that it is warranted by M K Martin Enterprise Inc. (hereafter called the company) to be free of any defects of material and workmanship. But the company shall not be liable for special, indirect or consequential, damages of any kind under this contract or otherwise. The company's liability shall be limited exclusively to replacing or repairing without charge, at its factory or elsewhere, at its discretion. Any material, or workmanship defects, which becomes apparent within one year from the date of purchase. The company will have no liability for damages of any kind. The buyer by the acceptance of the equipment will assume all liability for any damages, which may result from the use or misuse by his employees or others.

Warranty coverage is null and void unless the Warranty Registration form has been completely filled in and is on file at

M K Martin Inc
3950 Steffler Road
Elmira Ont. Ca.
N3B 2Z3

For your record

Purchase Date Y20__ M__

Model # _____

Serial # _____

Please cut at dotted line and return this registration form to the company via Mail, Fax (519-664-3695) or e-mail this information to-- sales@mkmartin.ca

M K Martin Inc
3950 Steffler Road
Elmira Ont. Ca.
N3B 2Z3

Buyers

Product name _____

Purchase Date Y20__ M__

Name _____

Model # _____

Address _____

Serial # _____

Postal Code _____

Safety

Take Note! This safety symbol is found throughout this manual to call your attention to instructions involving yourself and others working around the machine.

- **Failure to follow these instructions can result in injury or death!**



This symbol means

**--Attention!
--Become Alert!
--Your Safety is involved!**

Signal words are used in this book.

Caution: Indicates a potentially hazardous situation that may result injury.

Warning: Indicates a potentially hazardous situation that could result in serious injury or death.

Danger: Indicates a hazardous situation that needs to be avoided. It is you the operator that needs to be aware of these dangers.

If you have any questions not answered in this manual, please contact your dealer or M K Martin Enterprise Inc.

3950 Steffler Rd
Elmira On Ca
N3B 2Z3

Tel; 519-664-2752
Fax; 519-664-3695
e-mail; sales@mkmartin.ca



Safety – It's in your interest.



Safety Guidelines.

Safety of the operator is one of our main concerns, however it is up to the operator to practice caution.

To avoid personal injury, study the following precautions and insist that those that are working with you to follow them.

The Skid Steer Thrifty Cutter has a chain guard at the front of the machine, to lower the possibility of debris being ejected out of the machine.

The cutter has a cover plate in the deck to gain access to one side of the blade bolts, do not operate the cutter with this removed or missing.



This cutter has High Pressure hydraulic lines and a leak can be extremely hazardous!

Replace any decals that may be missing or not readable. Location of the decals are indicated elsewhere in this manual.

Do not use this machine while under the influence of drugs or alcohol.

Review the safety instructions with all users annually.

This equipment should not be operated by children: or those unfamiliar with the operation of the Skid Steer Thrifty® Cutter. **Do not allow persons to operate this machine until they have read this manual and/or were instructed by a qualified person.**

Do not paint over, remove or deface any safety signs or warning decals on the Thrifty® Cutter. **Observe all safety signs and practice the instructions on them.**

Do not use this machine to push or carry objects or people.



Please be careful with the extra length on the front of the loader, you need a larger space to turn.



Please stop the engine on the loader and set the cutter on a solid support! When servicing the blades do not work or walk under an unsupported cutter!

Skid Steer Thrifty® Cutter

This cutter was designed for a skid steer loader. The loader plate has a floating link to allow the cutter to float freely up and down at the front while in use. The hydraulics has a check-valve in the line that will act like an overrunning clutch when the cutter is stopped. This avoids the tremendous pressure surge when the valve is closed, allows the blade to be turned by hand during servicing and will not run the cutter in reverse rotation.

Operating the Thrifty® Cutter

With the cutter secured to the loader and you are at the site you want to cut.

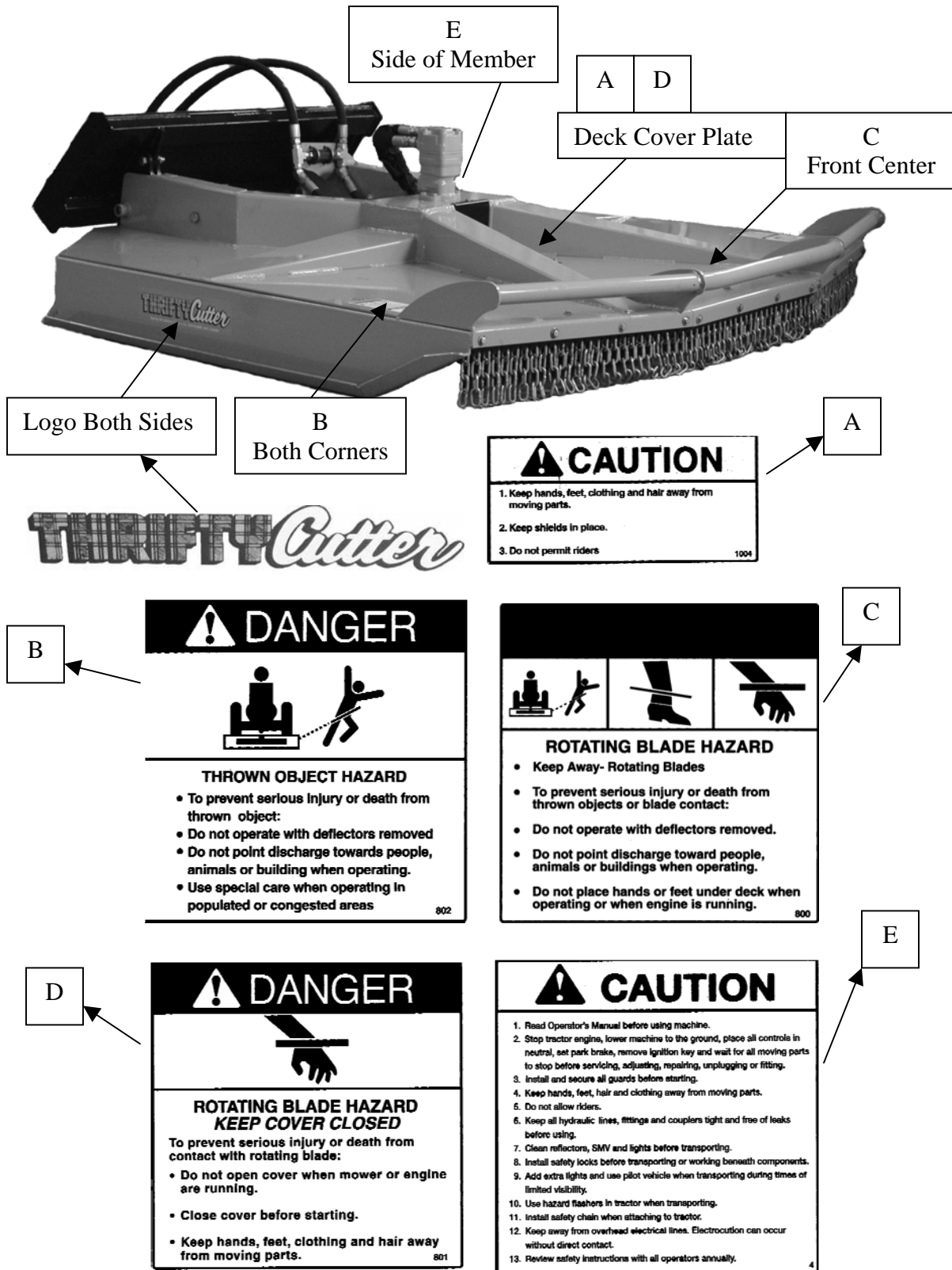


Ensure that NO bystanders or workers are in the vicinity that you want to cut.



**Do not run cutter in any other position then flat on the ground!
Be sure to stop the cutter whenever you raise it off the ground!**

Decal Location

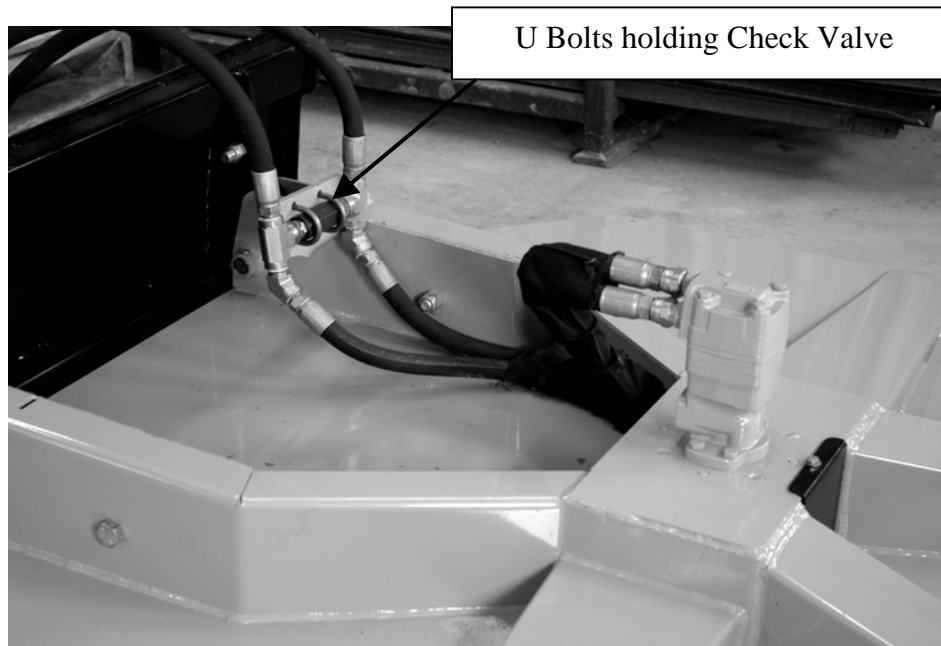


Skid Steer Thrifty® Cutter

Upon receiving the product please take a few moments and check for broken or damaged or missing parts that happened during shipping.

The Skid Steer Thrifty® Cutter is shipped with most or all the components in place. The exception; are the hydraulic lines.

Unpack the lines and route them as shown below. Clamp the check valve part to the frame to secure the lines.



Attaching the Thrifty® Cutter to your loader

1. Ensure that the hydraulic lines are not hanging in front of the loader plate
2. Hook loader adaptor into the top of the loader plate and tilt up until the front of the cutter is lifted.
3. Lock the attachment to the loader.
4. Attach the hydraulic lines to the loader.

You are now ready to do some cutting.

Operating the Thrifty® Cutter

This cutter is mounted in front of the loader and is pushed rather than dragged. The loader is also capable to put down pressure on the cutter, (*this is not desirable*). With the cutter tilted up slightly at the front, lower the cutter until the sides almost touch the ground.

- Tilt the cutter down until the front comes in contact with the ground.
- Tilt it a little further to allow the cutter to float over uneven terrain.
- Slowly start the cutter and bring it up to **Full** speed. (*It is the speed of the blades that do the cutting*).
- Lift the cutter up before turning



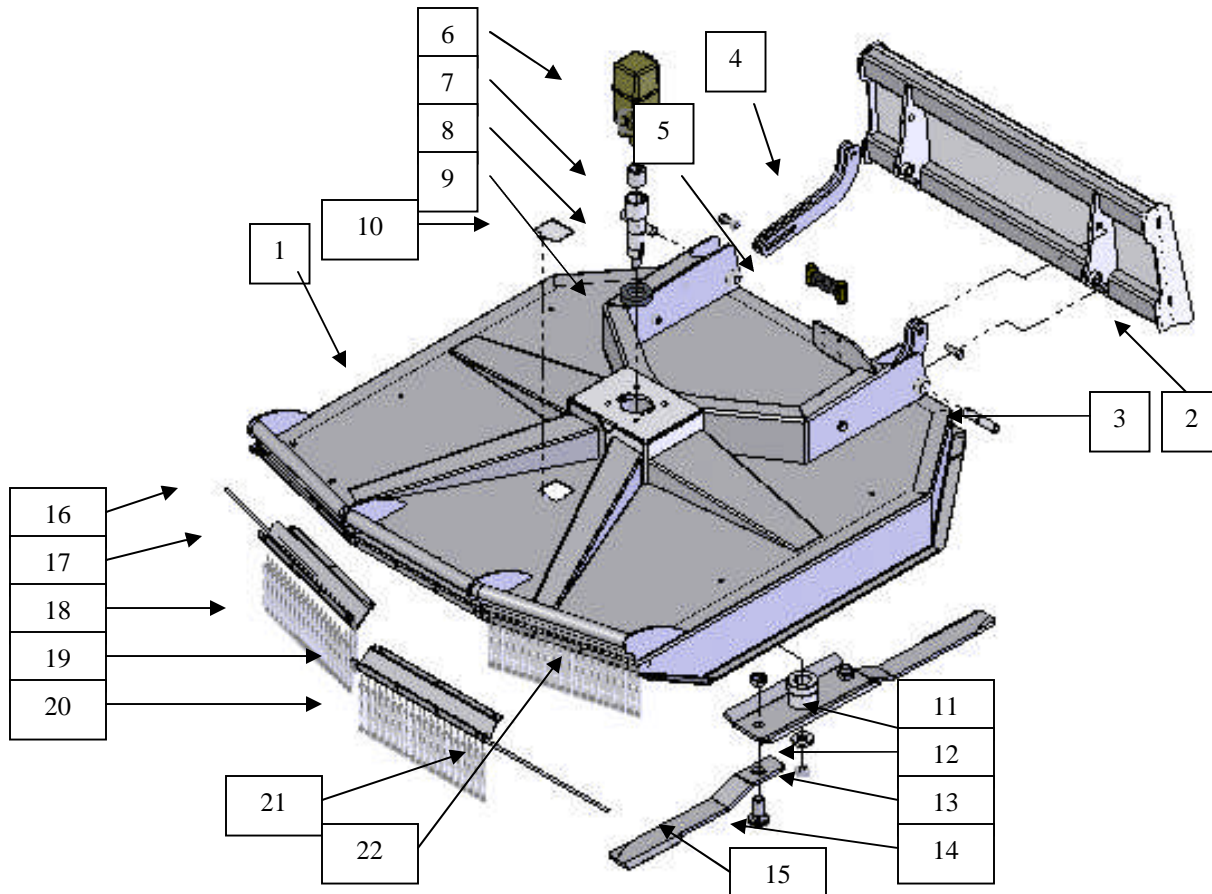
- Stop the cutter any time it is not in contact with the ground.
- Slow down if the cutter speed decreases.
- **After the job is completed** Stop the cutter blade.

When driving with the cutter attached to the loader. **Lift the cutter up for ground clearance only.**

The cutter extends out the front and will tend to swing in a larger arc when turning and may cause the loader to be unstable.

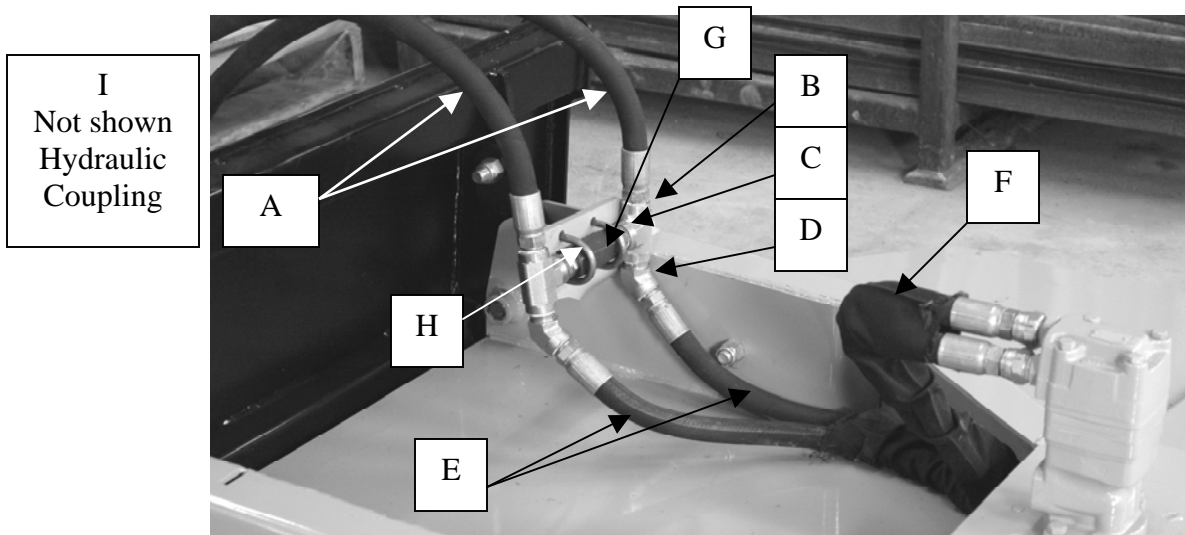


Skid Steer Thrifty® Cutter Parts



	Model		SSMTC60	SSMTC72
Item #	Description	Qty	Part #	Part #
1	Main Deck	1	512-SS601000	512-SS721000
2	Loader Adaptor Plate	1	512-SSLA100	512-SSLA100
3	Main Pivot Pin	3	512-SSLA101	512-SSLA101
4	Float Link	2	512-SSC100	512-SSC100
5	Check Valve Assy	1	512-SSC101	512-SSC101
6	Motor (16 GPM)	1	519-62310091	519-62310091
	Motor (20PM)	1	519-62310092	519-62310092
7	Motor Adaptor	1	512-SSC102	519-SSC102
8	Drive Spindle	1	512-SSC103	512-SSC103
9	Spindle Bearing	2	512-SSC104	512-SSC104
10	Deck Cover Plate	1	512-SS601001	512-SS601001
11	Cutter Bar	1	512-SS601002	512-SS721002
12	Cutter Bar Washer	1	512-SSC105	51-SSC105
13	Spindle Nut	1	512-SSC106	512-SSC106
14	Blade Bolt/Nut	2	512-602042	512-601042
15	Blade	2	512-602041	512-602041
16	Side Chain Retainer Rod	2	512-SS601003	512-SS721003
17	Right Chain Retainer	1	512-SS601004	512-SS721004
18	Side Chain Curtain	2	512-SS601005	512-SS721005
19	Center Chain Retainer	1	512-SS601006	512-SS721006
20	Center Chain Curtain	1	512-SS601007	512-SS721007
21	Center Chain Retainer Rod	1	512-SS601008	512-SS721008
22	Left Chain Retainer	1	512-SS60 1009	512-SS721009

Skid Steer Thrifty® Cutter Hydraulics



60-75 Cutter share the same hydraulic parts

Item #	Description	Part #
A	Loader Lines	512-SSC110
B	Tee	512-SSC111
C	Adaptor	512-SSC112
D	45° Elbow	512-SSC113
E	Motor Lines	512-SSC114
F	Hose Cover	512-SSC115
G	Check Valve	512-SSC116
H	U bolts	512-SSC117
I	Hydraulic Coupling (set)	512-SSC118

The hydraulic couplings are $\frac{3}{4}$ flat-face

Skid Steer Thirfty® Cutter

Maintenance

Check all nuts and bolts after the first hour of use.

Grease pivot pin on loader adaptor plate every few days of use.

When hooking up hydraulic lines check for wear marks and abraded spots. Replace if line are worn and/or cracked.



Inspect blades for wear every 25 hrs of use. Replace both blades and bolts if excessive wear is noticed.

Bolt Torque

As used on this equipment

Bolt torque table shown below gives torque values for the various bolts used.

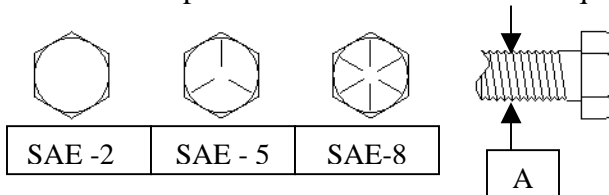
This chart is for non-lubricated threads.

Replace with the same strength bolt.

Torque Specifications. Torque values are identified by their head markings

Diameter	SAE 2		SAE 5		SAE 8	
"A"	Lb-ft	N.m	Lb-ft	N.m	Lb-ft	N.m
1/4	6	(8)	9	(12)	12	(17)
5/16	10	(13)	19	(25)	27	(36)
3/8	20	(27)	33	(45)	45	(63)
7/16	30	(41)	53	(72)	75	(100)
1/2	45	(61)	80	(110)	115	(155)
5/8	95	(128)	160	(215)	220	(305)
3/4	165	(225)	290	(390)	400	(540)
1	225	(345)	630	(850)	970	(1320)

Allen head cap screws are similar to SAE 8 quality.



These torques are for a reference only. Not all these sizes and grades are necessarily used in this machine. Bolts that are used as a pivot or hinge have to be used with a locknut, therefore only tighten enough to secure the bolt and still allowing the part to rotate freely.