

# H&S

FORAGE BOXES | RUNNING GEARS  
CHASSIS | HI-DUMP BOX

FAST | EFFICIENT | RELIABLE







5200  
SERIES  
Front Unload  
PTO driven

SWEPT-BACK DESIGN!

5200 series boxes feature a removable roof

NINE MODELS TO CHOOSE FROM  
IN 17' THROUGH 27' SIZES

5200 & 6200 series models are available  
in Apron or Twin Auger unload systems



FLAT BACK DESIGN  
The flat back design of the 5200 series with the fold down rear panel allows clean and easy adjustment to the main apron chains.

Transport lights are standard on all forage boxes.



SEPARATE CLUTCH  
A separate clutch allows you to start and clear the beaters before you start the main apron conveyors.  
Shown with shield open.

Optional roof (6219 & 6221) and PTO front unload

6200  
SERIES  
Front and  
Rear Unload



All 5200 & 6200 Series models have a 24" long, 22" wide cross conveyor extension with the ability to tilt DOWNWARD 22 degrees!

FEATURES

- A simple, trouble-free variable speed drive lets you match just the right unload speed to the crop type, load condition and blower capacity.
- The **deep stagger beater design** allows beaters to turn progressively faster from top to bottom. The slow-turning top beater doesn't pitch chunks forward but undercuts the heap and feeds tough material down to the bottom beaters. This delivers a smooth, even flow to the cross conveyor.



Shown with shield open.

- Forage box frames feature heavy 5" channel cross members and 2.5" x 2.5" side stakes.

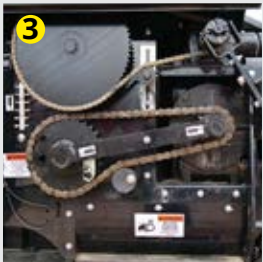
Optional 4th Beater



FASTER UNLOAD TIME AND THE SMOOTHEST  
UNLOADING SYSTEM ON THE MARKET

FEATURES

- PTO drive front unload  
(hydraulic drive is an option.)
- Uses three 18" 4-bar staggered spiral beaters – not augers.
- Spring-loaded tighteners on the beater drive chains.  
1 Shown with shield open.



MODEL - FLOOR/LOAD LENGTH	5200 SERIES - FRONT UNLOAD			6200 SERIES - FRONT & REAR UNLOAD		
	17'	19'	21'	19'	21'	23'
INSIDE WIDTH	7' 4 1/4" (88.25")			7' 4 1/4" (88.25")		
INSIDE HEIGHT	8' 3" (99")			7' 2" (86")		
OVERALL WIDTH	9' 4" (112")			9' 4" (112")		
OVERALL HEIGHT	10' (120")			10' 2" (122")		
OVERALL LENGTH	20' 8" (248")	22' 8" (272")	24' 8" (296")	24' 3" (291")	26' 3" (315")	28' 3" (339")
CUBIC FT. CAP. - NO ROOF/STRUCK	858.48	963.23	1,067.98	986.30	1,091.24	1,196.19
TUBULAR UPRIGHTS	2.5" x 2.5"			2.5" x 2.5"		
STRUCTURAL CHANNEL CROSS MEMBERS	5" - 6 GAUGE			5" - 6 GAUGE		
MAIN CHANNEL STRINGERS	10" - 7 GAUGE (42" SPACING)			8" - 7 GAUGE (34" SPACING)		
MAIN APRON SHAFT	2"			2"		
MAIN APRON CHAIN	667X			667X		
BOX SIDES AND REAR	ALUMINIZED			ALUMINIZED		
LEFT HAND DISCHARGE	STANDARD			STANDARD		

	5200 SERIES - FRONT UNLOAD	6200 SERIES - FRONT & REAR UNLOAD
FORAGE BOX FEATURES	<ul style="list-style-type: none"><li>SINGLE LEVER VARIABLE 12-SPEED UNLOAD</li><li>3 – 18" 4-BAR STAGGERED SPIRAL BEATERS</li><li>22" WIDE CROSS CONVEYOR W/#550 CHAIN/SLAT</li><li>24" SPRING ASSIST CROSS CONVEYOR EXTENSION</li><li>STANDARD LENGTH 540 RPM PTO</li><li>REMOVABLE ROOF</li><li>HIGHWAY LIGHTING &amp; POWER CORD</li><li>RUNNING GEAR HOLD-DOWN KIT</li></ul>	<ul style="list-style-type: none"><li>SINGLE LEVER VARIABLE 12-SPEED UNLOAD</li><li>3 – 18" 4-BAR STAGGERED SPIRAL BEATERS</li><li>22" WIDE CROSS CONVEYOR W/#550 CHAIN/SLAT</li><li>24" SPRING ASSIST CROSS CONVEYOR EXT.</li><li>HYDRAULIC DRIVE (1) REMOTE NEEDED–HOSES INCLUDED</li><li>LOCKING/UNLOCKING TAILGATE</li><li>HYDRAULIC GATE DELAY</li><li>NO ROOF</li><li>HIGHWAY LIGHTING &amp; POWER CORD</li></ul>
OPTIONAL FEATURES	<ul style="list-style-type: none"><li>540 RPM PTO/LONG IN LIEU OF STD. PTO (FOR USE W/TRACTOR QUICK HITCHES)</li><li>HYDRAULIC DRIVE IN LIEU OF STD. PTO (1) REMOTE NEEDED–HOSES INCLUDED</li><li>4TH BEATER KIT</li><li>ELECTRIC CAB CONTROL FOR FRONT UNLOAD SPEED ADJUSTMENT</li><li>2' EXTENSION HYDRAULIC CYLINDER KIT (1) REMOTE NEEDED - HOSES INCLUDED</li><li>NO ROOF</li></ul>	<ul style="list-style-type: none"><li>540 RPM PTO/STANDARD LENGTH IN LIEU OF HYDRAULIC DRIVE</li><li>540 RPM PTO/LONG IN LIEU OF HYD. DRIVE (FOR USE W/TRACTOR QUICK HITCHES)</li><li>4TH BEATER KIT</li><li>2' EXTENSION HYDRAULIC CYLINDER KIT (1) REMOTE NEEDED - HOSES INCLUDED</li><li>ROOF FOR 19' &amp; 21' MODELS</li><li>ELECTRIC CAB CONTROL FOR FRONT UNLOAD SPEED ADJUSTMENT</li><li>ROOF HOOD FOR ALL MODELS</li></ul>





7200 SERIES  
Front and Rear Unload



FORAGE BOX FRAMES FEATURE HEAVY 5" CHANNEL CROSS MEMBERS AND 2.5" X 2.5" SIDE STAKES.

MODEL - FLOOR/LOAD LENGTH	7200 SERIES - FRONT & REAR UNLOAD		
	23'	25'	27'
INSIDE WIDTH	7' 4 1/4" (88.25")		
INSIDE HEIGHT	7' 2" (86")		
OVERALL WIDTH	9' 4" (112")		
OVERALL HEIGHT	10' 2" (122")		
OVERALL LENGTH	26' 11" (323")	28' 11" (347")	30' 11" (371")
CUBIC FT. CAP. - NO ROOF/STRUCK	1,196.19	1,301.13	1,406.08
TUBULAR UPRIGHTS	2.5" x 2.5"		
STRUCTURAL CHANNEL CROSS MEMBERS	5" - 6 GAUGE		
MAIN CHANNEL STRINGERS	8" - 7 GAUGE (34" SPACING)		
MAIN APRON SHAFT	2"		
MAIN APRON CHAIN	667XH		
BOX SIDES AND REAR	BOLTED ALUMINIZED		
LEFT-HAND DISCHARGE	STANDARD		

A HEAVY-DUTY  
GEARBOX WITH  
LARGE BEARINGS  
AND HEAVY DRIVE  
CHAINS POWERS  
THE 7200 SERIES  
FORAGE BOXES



Quick Release Cross Conveyor  
Clean-Out Pan  
Shown with shield open.



CROSS CONVEYOR EXTENSION  
A 24" Hydraulic Fold Cross Conveyor Extension is standard equipment on all 7200 series models.



QUICKLY CHANGE FROM FRONT TO REAR UNLOAD  
Changing the drive system from front to rear unload is as simple as removing the drive pin from the front drive sprocket and placing it in the rear drive sprocket. Shown with shield open.



Spring Loaded Tighteners on Beaters.  
Shown with shield removed.



HYAULIC MANIFOLD  
A hydraulic manifold with quick couplers allows you to change from front unload to rear unload quickly. Shown with shield open.

**ELECTRIC-OVER-HYDRAULIC CONTROL SYSTEM**  
An Electric-Over-Hydraulic Control System on the 7200 series allows the operator to stay in the cab of the tractor for all unloading functions!



**ELECTRIC CONTROL BOX**  
The electric control box operates the valves of the Hydraulic System to function the Variable Speed High/Low Main Apron Unload System.

7200 SERIES - FRONT & REAR UNLOAD	
FORAGE BOX FEATURES	<ul style="list-style-type: none"><li>• ELECTRIC-OVER-HYDRAULIC CONTROL SYSTEM</li><li>• 3 - 18" 4-BAR STAGGERED SPIRAL BEATERS</li><li>• 22" WIDE CROSS CONVEYOR W/#550 CHAIN/SLAT</li><li>• 24" HYD. FOLD CROSS CONVEYOR EXTENSION</li><li>• AUTOMATIC LOCKING/UNLOCKING TAILGATE</li><li>• HYDRAULIC GATE DELAY</li><li>• NO ROOF</li><li>• HIGHWAY LIGHTING &amp; POWER CORD</li></ul>
OPTIONAL FEATURES	<ul style="list-style-type: none"><li>• 4TH BEATER KIT</li><li>• ROOF HOOD FOR ALL MODELS</li></ul>

Optional 4th Beater







AVAILABLE IN EITHER TRUCK MOUNT,  
CHASSIS MOUNT, OR RUNNING GEAR MOUNT

CUSTOMER  
FARM NAME:  
NO CHARGE



ALL MODELS ARE STANDARD WITH THE H&S PATENTED CENTER DRIVE SYSTEM

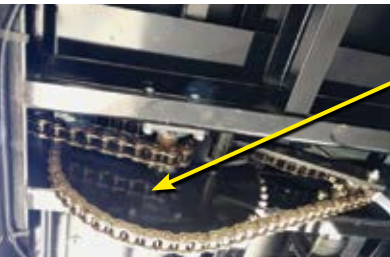
FEATURES

- 1. The NEW, LARGER bolted **Front Flip Down Panel** is available with an optional electric actuator for ease of field opening.
- 2. 5" side channels are welded to the stake pockets for added strength and are also used as a chain return slide.



- 3. Side stakes are 2 1/2" x 2 1/2" tubular steel with a 15 1/2" spacing between them.

All **Wide Body** Boxes have poly floors with formed steel channel supports that run lengthwise under the floor for added strength.



The patented hydraulic center mount drive on all **Wide Body** Boxes provides smooth, trouble-free operation.

Spring-loaded tighteners are on the main apron drive for less stress on the main aprons upon engagement.

8200 Series features new front end design with **BIGGER WINDOW**



ALUMINIZED SIDES  
WB8218A 18' WB8220A 20' WB8222A 22'



FIBERGLASS REINFORCED  
PLYWOOD SIDES  
WB8222 22' WB8226 26'  
WB8224 24' WB8230 30'

- Dual gate delay on all **Wide Body** models
- Bolted front flip down panel

DOOR CHOICES

The **Wide Body** box offers a choice of a top pivot rear door with dual cylinder hydraulic gate delay (1) or double barn doors for chassis or truck mounting (2).



New **dual cylinder hydraulic gate delay system** allows for a fully open rear door.



**Side Transport Lights & Hydraulic Hoses** are standard on Chassis Mount Boxes.

OPTIONS

- **Electric actuator for front flip down**
- **Electric drive flip tarp**



- **Front-to-rear electric roll tarp and forage hood**
- **Roof hood**
- **Digi-Star Scale System for chassis or truck mount**

MODEL	WB8218A	WB8220A	WB8222A/ WB8222	WB8224	WB8226	WB8230
INSIDE WIDTH	96"	96"	96"	96"	96"	96"
INSIDE HEIGHT	86"	86"	86"	86"	86"	86"
INSIDE LENGTH	18'	20'	22'	24'	26'	30'
OVERALL LENGTH	18' 9"	20' 9"	22' 9"	24' 9"	26' 9"	30' 9"
OVERALL WIDTH	102"	102"	102"	102"	102"	102"
STD. BOX OVERALL HEIGHT	101"	101"	101"	101"	101"	101"
STD. BOX CAPACITY STRUCK LEVEL	1015 CU. FT.	1130 CU. FT.	1244 CU. FT.	1359 CU. FT.	1473 CU. FT.	1702 CU. FT.
WEIGHT - STD. BOX	6710#	7235#	7624# / 7584#	7873#	8448#	9405#
BOX MATERIAL (FRP = FIBERGLASS REINFORCED PLYWOOD)	ALUMINUM	ALUMINUM	ALUM./FRP	FRP	FRP	FRP
MAIN APRON CHAIN	667X - STANDARD		667XH - STANDARD			
MAIN APRON DRIVE	HYDRAULIC DRIVE					
UPLOAD SPEED	UNLOAD TIME IS DEPENDENT ON TRACTOR RPM, HYDRAULIC PRESSURE, AND GPM					
REAR ENDGATE	GATE DELAY W/AUTOMATIC LOCK AND UNLOCK					



TRUCK OR CHASSIS MOUNT

CUSTOMER  
FARM NAME:  
NO CHARGE



16 Gauge Stainless  
Steel Sides



The idler apron shaft assembly  
features 6-tooth machined steel  
sprockets with bronze idler  
bushings.  
*Shown with shield open.*

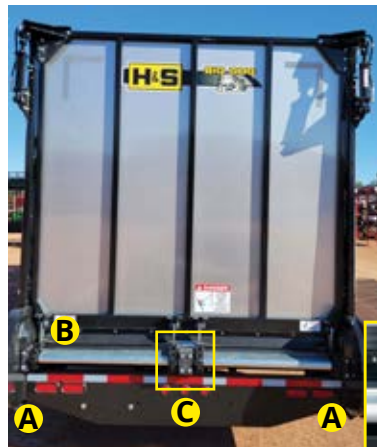


An optional gravity unload grain  
hopper is available on *Top Dog*/  
*Big Dog* forage boxes with a top  
hinged gate.

OPTIONS



The *Big Dog*  
features  
an electric  
actuator (A)  
and roof hood  
(B).



**HYDRAULIC DRIVE AND DOOR FEATURES**  
Large 1" steel hydraulic lines to the back of the box drive the **dual hydraulic motors** (A) evenly for more power and less shaft stress than a single motor system.

For pivot-style door locks (B), secure the rear door protecting your forage.



The drive shaft features  
MD nylon reversible-style  
bearings (C).

FEATURES

1. Apron tension adjustment is made by tightening the 4 spring-loaded tightener bolts on the front of the box. The spring-loaded tighteners maintain tension on the apron during start-up and operation.
2. Panels above the wheels act as a chain slide for the main apron and protect mud and debris from getting to the apron chain.
3. All *Big Dog* & *Top Dog* models have a NEW, LARGER bolted **Front Flip Down Panel** available with an optional electric actuator for ease of field opening.
4. The PL88C OPEN BARREL main apron pintle chain @ 29,900# per strand stays flexible. 2" x 1" x 3/16" formed apron channels are used for the apron cross bars. The floor is 1/2" thick virgin grade solid poly.



**OPTIONAL ELECTRIC ROLL TARP**  
The optional front-to-rear, or side-to-side electric roll tarp, is a nice feature to keep valuable forage from blowing out during transport.

MODEL - FLOOR/LOAD LENGTH	1126	1130
CAPACITY - STRUCK LEVEL	1477 CU. FT.	1752 CU. FT.
BOX WEIGHT	N/A	N/A
INSIDE LENGTH	26'	30'
INSIDE WIDTH	98"	98"
INSIDE HEIGHT	86"	86"
OVERALL LENGTH	27' 7"	31' 7"
OVERALL WIDTH	102"	102"
OVERALL HEIGHT INCLUDING TAILGATE	N/A	N/A
SIDE HEIGHT	N/A	N/A
DRIVE SYSTEM	DUAL HYDRAULIC MOTORS	
FINAL DRIVE SYSTEM	DUAL FINAL DRIVE W/SPRING LOADED TIGHTENERS	
MAIN APRON CHAIN & SLATS	PL88C OPEN BARREL PINTLE 2" X 1" X 3/16" FORMED APRON CHANNELS	
REAR DRIVE SHAFT	2 1/4" 1045 STEEL	
FRONT IDLER SHAFT	1 3/4" 1045 STEEL	
UPRIGHTS	2" X 2" X 3/16" TUBULAR STEEL SET ON 16" CENTERS	
UNLOAD TIME	DEPENDENT ON TRACTOR HYDRAULIC SYSTEM & GPM'S	
WALL MATERIAL	STAINLESS STEEL	
FLOOR MATERIAL	VIRGIN GRADE POLY	
GATE DELAY SYSTEM	STANDARD	
REAR DOOR LATCHING	AUTOMATIC	
FRONT WINDOW	17" X 28"	
LIGHTS	LED	
CUSTOMER FARM NAME	STANDARD	

OPTIONS

- BARN DOORS
- GRAIN KIT - TOP PIVOT DOOR ONLY
- VARIABLE SPEED FLOW CONTROL
- ELECTRIC FRONT TO BACK SCISSOR TARP
- ELECTRIC SIDE TO SIDE ROLL TARP
- ROOF HOOD





FEATURES

1. Apron tension adjustment is made by tightening the 4 spring-loaded tightener bolts on the front of the box. The spring-loaded tighteners maintain tension on the apron during start-up and operation.

2. New 25,000# spring axles w/heavy-duty spindles are standard. An air ride suspension system is optional.

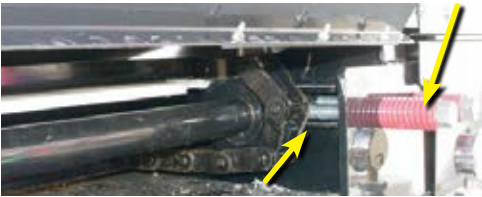
3. Panels above the front & rear wheels act as a chain slide for the main apron and protect mud and debris from getting to the apron chain.
4. All **Big Dog** & **Top Dog** models have a NEW, LARGER bolted **Front Flip Down Panel** available with an optional electric actuator for ease of field opening.

5. The PL88C OPEN BARREL main apron pintle chain @ 29,900# per strand stays flexible. 2" x 1" x 3/16" formed apron channels are used for the apron cross bars. The floor is 1/2" thick virgin grade solid poly.

CUSTOMER FARM NAME:  
NO CHARGE

16 Gauge Stainless Steel Sides

AXLES/SUSPENSIONS/TIRES/RIMS	
AXLES	NEW 25,000# AXLES WITH HEAVY-DUTY SPINDLES
SUSPENSION SYSTEM OPTIONS	SPRING OR AIR RIDE
TIRES/RIMS OPTIONS	<ul style="list-style-type: none"><li>• 11.00 X 22.5 TIRES ON PAINTED DUAL STEEL WHEELS</li><li>• 11.00 X 22.5 TIRES ON DUAL ALUMINUM WHEELS</li><li>• 425/65R 22.5 TIRES ON ALUMINUM SUPER SINGLE WHEELS</li><li>• 425/65R 22.5 TIRES ON STEEL SUPER SINGLE WHEELS</li><li>• 455/55R 22.5 TIRES ON ALUMINUM SUPER SINGLE WHEELS</li><li>• 455/55R 22.5 TIRES ON STEEL SUPER SINGLE WHEELS</li></ul>



**IDLER APRON SHAFT ASSEMBLY**  
The idler apron shaft assembly features 6-tooth machined steel sprockets with bronze idler bushings. Shown with shield open.

COMPLETELY DESIGNED & MANUFACTURED BY H&S!

MODEL - FLOOR/LOAD LENGTH	1136	1140
CAPACITY - STRUCK LEVEL	2050 CU. FT.	2286 CU. FT.
BOX WEIGHT	18, 240 LBS.	20, 270 LBS.
INSIDE LENGTH	36'	40'
INSIDE WIDTH	98"	98"
INSIDE HEIGHT	86"	86"
OVERALL LENGTH	37' 7"	41' 7"
OVERALL WIDTH	102"	102"
OVERALL HEIGHT INCLUDING TAILGATE	13' 4"	13' 4"
SIDE HEIGHT	146"	146"
DRIVE SYSTEM	DUAL HYDRAULIC MOTORS	
FINAL DRIVE SYSTEM	DUAL FINAL DRIVE W/SPRING LOADED TIGHTENERS	
MAIN APRON CHAIN & SLATS	PL88C OPEN BARREL PINTLE 2" X 1" X 3/16" FORMED APRON	
REAR DRIVE SHAFT	2 1/4" 1045 STEEL	
FRONT IDLER SHAFT	1 3/4" 1045 STEEL	
UPRIGHTS	2" X 2" X 3/16" TUBULAR STEEL SET ON 16" CENTERS	
UNLOAD TIME	DEPENDENT ON TRACTOR HYDRAULIC SYSTEM & GPM'S	
WALL MATERIAL	STAINLESS STEEL	
FLOOR MATERIAL	VIRGIN GRADE POLY	
GATE DELAY SYSTEM	STANDARD	
REAR DOOR LATCHING	AUTOMATIC	
FRONT WINDOW	17" X 28"	
LIGHTS	LED	
CUSTOMER FARM NAME	STANDARD	

MAIN FRAME



The main frame is made of high quality structural steel 10" I-beams for the rear and compressed down to 5.13" in the front with full-length front gussets.



OPTIONS



**GRAIN HOPPER**  
An optional gravity unload grain hopper is available on **Top Dog** /**Big Dog** forage boxes with a top hinged gate.



**ELECTRIC ROLL TARP**  
The optional front-to-rear, or side-to-side electric roll tarp, is a nice feature to keep valuable forage from blowing out during transport.



The **Top Dog** features an electric actuator (A) and roof hood (B).





CHASSIS FEATURE A HEAVY-DUTY GUSSETED BOX-STYLE FRAME FOR SUPERIOR STRENGTH



Choice of Clevis or Bullnose Hitch

3122: 32,000 LB. CAPACITY RATING

3100 SERIES: ACCOMODATES 18' TO 30' FORAGE BOXES



Choice of Clevis or Bullnose Hitch

3126: 48,000 LB. CAPACITY RATING

CHASSIS SCALE SYSTEM AND BRAKE OPTION AVAILABLE ON ALL MODELS



Standard with Bullnose Hitch

3130: 60,000 LB. CAPACITY RATING



DIGI-STAR™ SCALE SYSTEM  
The Digi-Star™ Scale System (shown in above picture) is optional on all 3100 & 4100 series models.

MODEL	3122	3126	3130
OVERALL LENGTH	25' 9"	30' 3"	34' 11 1/4"
HITCH	CHOICE OF CLEVIS OR BULLNOSE		BULLNOSE
TIRE/RIM CHOICES	<ul style="list-style-type: none"><li>• 19L X 16.1 10 PLY TIRES W/RIMS</li><li>• 425 X 22.5 USED TRUCK TIRES W/RIMS</li></ul>	<ul style="list-style-type: none"><li>• 425 X 22.5 USED TRUCK TIRES W/RIMS</li><li>• 480/55 X 22.5 TIRES W/RIMS</li><li>• 600/50 X 22.5 16 PLY FLOTATION TIRES W/RIMS</li></ul>	<ul style="list-style-type: none"><li>• 700/50 X 22.5 16 PLY TIRES W/RIMS</li></ul>
TREAD WIDTH	90"	90"	90"
SPINDLES	3"	3.5"	3.5"
CAPACITY	32,000#	48,000#	60,000#
SUSPENSION	NONE/WALKING BEAM	NONE/WALKING BEAM	NONE/WALKING BEAM
HUBS	8 BOLT – 8,000#	10 BOLT – 12,000#	10 BOLT – 15,000#
JACK	STANDARD	STANDARD	STANDARD
BRAKES	ELECTRIC ACTIVATED OVER HYD. BRAKE SYSTEM W/CAB CONTROL BOX	ELECTRIC ACTIVATED OVER HYD. BRAKE SYSTEM W/CAB CONTROL BOX	ELECTRIC ACTIVATED OVER HYD. BRAKE SYSTEM W/CAB CONTROL BOX
SCALE	OPTIONAL		





4126 SUSPENSION CHASSIS



13 ton per axle rating | 26-ton Spring Suspension System

4130 SUSPENSION CHASSIS



15 ton per axle rating | 32-ton Spring Suspension System



**DIGI-STAR™ SCALE SYSTEM**  
The Digi-Star™ Scale System (shown in above picture) is optional on all 3100 & 4100 series models.

SUPENSENSION SYSTEM



**All 4100 models are brake ready.**  
An **Optional Hydraulic Brake Cylinder Package** is needed for the operation of the brakes.



**BULLNOSE HITCH**  
A Bullnose Hitch is standard on the 4126 & 4130 Suspension Chassis

MODEL	4126	4130
OVERALL LENGTH	32' 6 1/4"	37' 3/8"
HITCH	BULLNOSE	
TIRE/RIM CHOICES	<ul style="list-style-type: none"><li>• 600/50 X 22.5 FLOTATION TIRES W/RIMS</li><li>• 700/50 X 22.5 FLOTATION TIRES W/RIMS</li><li>• 700/50 X 22.5 FLOTATION TIRES W/RIMS</li></ul>	<ul style="list-style-type: none"><li>• 700/50 X 22.5 FLOTATION TIRES W/RIMS</li><li>• 710/45 X 22.5 RADIAL FLOTATION TIRES W/RIMS</li></ul>
TREAD WIDTH	94.5"	95"
CAPACITY	52,000#	60,000#
AXLE RATING	13 TON PER AXLE	15 TON PER AXLE
SUSPENSION	26-TON SPRING	32-TON SPRING
HUBS	10 BOLT	
JACK	STANDARD	
BRAKES	HYDRAULIC	
SCALE	OPTIONAL	





**Full Contact Turn Stops** distribute the pressure exerted in tight dragging turns along the bolster face. This reduces the possibility of bunk damage or collapse.

SINGLE AXLE MODELS	1410	1412	1414	1420
CAPACITY* (30 KPH / 20 MPH)	20,000 LBS.	24,000 LBS.	28,000 LBS.	40,000 LBS.
CAPACITY* (50 KPH / 30 MPH)	18,000 LBS.	18,000 LBS.	24,000 LBS.	36,000 LBS.
SPINDLES	2" DIA. C1045 HOT ROLLED	2 ¼" DIA. C1045 COLD ROLLED	2 ¾" DIA. C1045 COLD ROLLED	3" DIA. 1144 STRESS PROOF
HUBS	6 BOLT	8 BOLT	8 STUD	8 STUD
BEARINGS - BORE SIZE (INNER/OUTER)	TAPER ROLLER 1.80 / 1.38		TAPER ROLLER 2.165 / 1.625	
FRONT AXLE	6 X 3 X .250 WALL	7 X 3 X .250 WALL	8 X 3.5 X .250 WALL	10 X 4 X .250 WALL
REAR AXLE	6 X 3 X .250 WALL	7 X 3 X .250 WALL	8 X 3.5 X .250 WALL	10 X 4 X .188 WALL
TONGUE BRACKET MOUNTING	1 ½" BOLT BEARING MTD.			
TONGUE BOLT	1 ⅝" DIAMETER			
TONGUE LATCH	RETRACTABLE AUTOMATIC RELOCK - STANDARD ON ALL MODELS			
REACH POLES	3" O.D. X .188 WALL - ROUND TUBE			6 X 4 X .188 TUBES
WHEEL BASE	ADJUSTABLE			
BOLSTER STAKES	ADJUSTABLE 38.5" - 40.5" - 42.5"		42.5" FIXED	
STEERING	AUTOMOTIVE TYPE			
TIE ROD ENDS	GREASABLE AUTOMOTIVE-STYLE BALL JOINTS			
HEIGHT FROM GROUND TO TOP OF BUNK	24" ON 11L X 15 TIRES	26" ON 12.5 X 16 TIRES 30" ON 11 X 22.5 TIRES	30" ON 11 X 22.5 TIRES	34" ON 44S/65 X 22.5 TIRES
APPROX. WEIGHT**	740 LBS.	845 LBS.	1,015 LBS.	1,495 LBS.
2-WHEEL HYD. DRUM SURGE BRAKES	N/A	N/A	N/A	N/A
4-WHEEL HYD. DRUM SURGE BRAKES	N/A	N/A	N/A	N/A
2-WHEEL HYD. DISC BRAKES	N/A	N/A	N/A	OPTIONAL
4-WHEEL HYD. DISC BRAKES	N/A	N/A	N/A	N/A
SAFETY CHAIN	⅜" GR. 70		½" GR. 70	
SPRING ASSIST TONGUE	SINGLE SPRING STANDARD			DOUBLE SPRING STANDARD

\*THE RATED CAPACITIES PROVIDED ARE FOR THE CHASSIS ONLY. TIRE SIZE DETERMINES GVWR.  
\*\*NOTED WEIGHTS ARE APPROXIMATE MINUS RIMS AND TIRES.



**1420 & 1622 Running Gears** have 4-bolt brake flanges as standard equipment so that optional hydraulic disc brakes may be installed.

TANDEM AXLE MODELS	1612	1614	1618	1622
CAPACITY* (30 KPH / 20 MPH)	24,000 LBS.	28,000 LBS.	36,000 LBS.	44,000 LBS.
CAPACITY* (50 KPH / 30 MPH)	24,000 LBS.	27,000 LBS.	36,000 LBS.	44,000 LBS.
SPINDLES	FRONT: 2 ¾" DIA. C1045 COLD ROLLED REAR: 2 ¼" DIA. C1045 COLD ROLLED	2 ¼" DIA. C1045 COLD ROLLED	3" DIA. C1045 COLD ROLLED	3" DIA. 1144 STRESS PROOF
HUBS	6 BOLT	8 BOLT	8 STUD	8 STUD
BEARINGS - BORE SIZE (INNER/OUTER)	TAPER ROLLER 1.80 / 1.38		TAPER ROLLER 2.165 / 1.625	
FRONT AXLE	6 X 3 X .250 WALL	7 X 3 X .250 WALL	8 X 3.5X .250 WALL	10 X 4 X .250 WALL
REAR AXLE	6 X 3 X .250 WALL	7 X 3 X .313 WALL	8 X 4X .250 WALL	10 X 4 X .375 WALL
TONGUE BRACKET MOUNTING	1 ½" BOLT BEARING MTD.			
TONGUE BOLT	1 ⅝" DIAMETER			
TONGUE LATCH	RETRACTABLE AUTOMATIC RELOCK - STANDARD ON ALL MODELS			
REACH POLES	3" O.D. X .188 WALL - ROUND TUBE			6 X 4 X .188 TUBES
WHEEL BASE	ADJUSTABLE			
BOLSTER STAKES	ADJUSTABLE 38.5" - 40.5" - 42.5"	42.5" FIXED		
STEERING	AUTOMOTIVE TYPE			
TIE ROD ENDS	GREASABLE AUTOMOTIVE-STYLE BALL JOINTS			
HEIGHT FROM GROUND TO TOP OF BUNK	23" ON 11L X 15 TIRES	26" ON 12.5 X 16 TIRES	30" ON 11 X 22.5 TIRES	32" ON 44S/65 X 22.5 TIRES
APPROX. WEIGHT**	985 LBS.	1,155 LBS.	1,495 LBS.	2,405 LBS.
2-WHEEL HYD. DRUM SURGE BRAKES	N/A	N/A	N/A	N/A
4-WHEEL HYD. DRUM SURGE BRAKES	N/A	N/A	N/A	N/A
2-WHEEL HYD. DISC BRAKES	N/A	N/A	N/A	OPTIONAL
4-WHEEL HYD. DISC BRAKES	N/A	N/A	N/A	OPTIONAL
SAFETY CHAIN	⅜" GR. 70	½" GR. 70		
SPRING BALANCER KIT	SINGLE SPRING STANDARD		DOUBLE SPRING STANDARD	

\*THE RATED CAPACITIES PROVIDED ARE FOR THE CHASSIS ONLY. TIRE SIZE DETERMINES GVWR.  
\*\*NOTED WEIGHTS ARE APPROXIMATE MINUS RIMS AND TIRES.

FEATURES

- Spring Assist Pole
- Adjustable Wheel Base
- Greasable Automotive Style Ball Joints
- Retractable Automatic Relock Tongue Latch
- Tapered Roller Bearings in Main Pivot Points
- Safety Chain





UNDER 2-MINUTE DUMPING CYCLE

LIFT AND DUMP  
APPROXIMATELY  
30,000 LBS.  
OF PRODUCT



HDB9215

CUBIC FT. CAPACITY STRUCK LEVEL W/O EXT.	863
CUBIC FT. CAPACITY STRUCK LEVEL W/EXT.	1,129
INSIDE LENGTH OF BOX	180" (15')
INSIDE WIDTH OF BOX – BOTTOM/TOP	65"/136" (5' 5"/11' 4")
DEPTH OF BOX	89" (7' 5")
OVERALL LENGTH MIN./MAX W/POLE ADJUSTMENT	304"/328" (25' 4"/27' 4")
OVERALL WIDTH	158" (13' 2")
SHIPPING WIDTH (TOP SLIDE TO HUB CAP)	143" (11' 11")
LOADING HEIGHT	130" (10' 10")
SHIPPING HEIGHT	117" (9' 9")
FRONT LIFT CYLINDER (SIZE/LENGTH)	5.5" X 72"
REAR LIFT CYLINDER (SIZE/LENGTH)	4.75" X 72"
DUMP CYLINDERS (SIZE/LENGTH)	5" X 71.25"
MAXIMUM DUMP LIP CLEARANCE	31" (2' 7")
MINIMUM DUMP HEIGHT	116" (9' 8")
MAXIMUM DUMP HEIGHT	184" (15' 4")
MAXIMUM GROUND CLEARANCE	15" (1' 3")
TREAD WIDTH	121" (10' 1")
SPINDLE SIZE	4.5"
TIRES	30.5 X 32 R1 16 PLY RADIAL TIRES
JACK	12,000 LBS.
SHIPPING WEIGHT W/TIRES	15,243 LBS.



FEATURES

1. (1) 27" x 16" Sight Windows and (2) Tub Access Panels
2. Standard Highway Lighting
3. Adjustable Height Single Clevis Swivel Hitch
4. Telescoping/Adjustable Length Pole
5. Heavy-Duty 4 1/2" Spindles with Oil Bath Hubs
6. Rear Tow Bar
7. 12,000 lb. Jack

BOX-STYLE FRAME

The **HI-DUMP Box** features a combination 10 and 12-gauge steel tub construction, plus a heavy gusseted and reinforced box-style frame.

VARIABLE DUMPING HEIGHT

Variable dumping height gives you more versatility at harvest time. Right-hand dump has a 47-degree dumping angle.

HYDRAULIC SYSTEM

The master/slave hydraulic system automatically rephases at the end of each cylinder stroke and has the flexibility to top off a truckload with a partial dump – not restricted to a full dump cycle.



OPTIONS

- **18" Dumping Lip Extension (A)**
- **Dual Weight Box Package (B)**
- **Suitcase Weight Bracket**
- **(10) Suitcase Weights**
- **Safety Chain**





***STRONG HERITAGE***

***STRONG PEOPLE***

***STRONGER FUTURE!***

For over 50 years, H&S Manufacturing has made life better. Our team is committed to building long-lasting relationships and high-performance machinery. As we continue to grow and move forward, we want you to farm smarter with our most reliable and innovative farming equipment.



WARRANTY: See operator's manual for warranty details and limitations. H&S reserves the right to change its products or the description at any time without notice or obligation.

1/22 3M

**H&S MANUFACTURING**

[www.hsmfgco.com](http://www.hsmfgco.com)



**H&S MAIN OFFICE • 2608 S. HUME AVE.  
MARSHFIELD, WI 54449 • (715) 387-3414**

**H&S WAREHOUSE • 10145 LAKESHORE ROAD  
P.O. BOX 1260 • RIPLEY, NY 14775 • (716) 736-7595**

