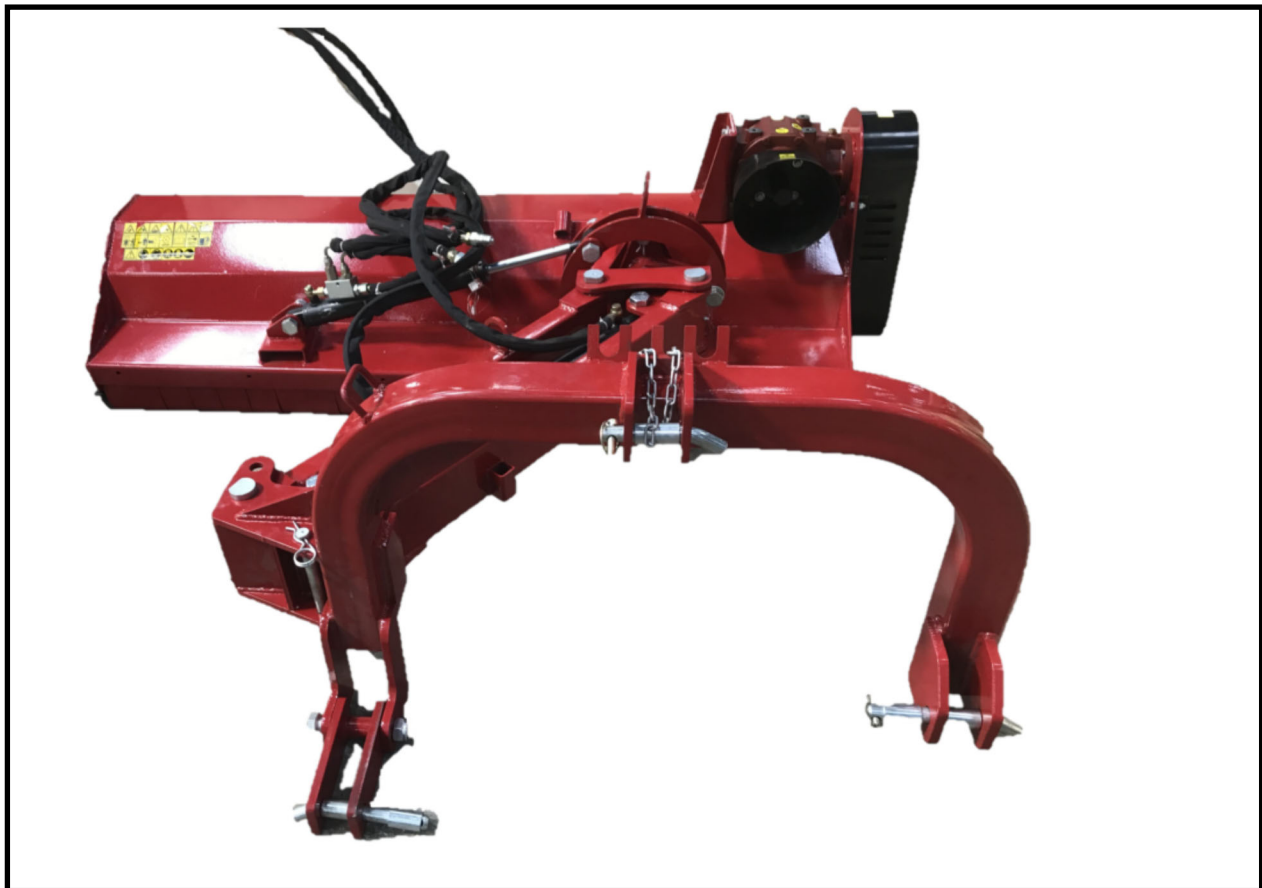




Slope Flail Mowers
BCRL & BCRM
Operation and Parts Manual



TO THE CUSTOMER

This manual contains valuable information about your new mower. It has been carefully prepared to give you helpful suggestions for operating, adjusting and servicing.

Keep this manual in a convenient place for quick and easy reference. Study it carefully, only by proper care and operation can you expect to receive the service and long life designed and built into this mower.

It is the owner's and/or operator's responsibility to...

- Read and understand the information contained in this manual.
- Operate, lubricate, assemble and maintain the equipment in accordance with all instructions and safety procedures in this manual.
- Inspect the equipment and replace or repair any parts that are damaged or worn which could cause damage, wear to other parts, or cause a safety hazard.

TABLE OF CONTENTS

DESCRIPTION	PAGE NUMBER
SAFETY INSTRUCTIONS	4
SAFETY TRAINING	5
STARTING AND STOPPING SAFETY	5
OPERATION SAFETY	6
TRANSPORT SAFETY	6
SERVICE AND MAINTENANCE SAFETY	7
STORAGE SAFETY	7
SAFETY SIGNS	8
ASSEMBLY	9
ATTACHING TO THE TRACTOR	10
OPERATION	11
MAINTENANCE	13
PARTS BREAKDOWN	15-35
WARRANTY	37

SAFETY INSTRUCTIONS

Good safety practices not only protect you, but also the people around you. Make these practices a working part of your safety program. Be certain that everyone operating this equipment is familiar with the recommended operating and maintenance procedures and follows all the safety precautions. Most accidents can be prevented. Do not risk injury or death by ignoring good safety practices.

The alert symbol is used throughout this manual. It indicates attention is required and identifies hazards. Follow the recommended precautions.

The safety alert symbol means...

ATTENTION! BECOME ALERT! YOUR SAFETY IS INVOLVED!

CAUTION

The caution symbol indicates a potentially hazardous situation that, if not avoided, may result in minor or moderate injury. It may also be used to alert against unsafe practices.

WARNING

The Warning Symbol indicates a potentially hazardous situation that, if not avoided, could result in death or serious injury, and includes hazards that are exposed when guards are removed. It may also be used to alert against unsafe practices.

DANGER

The Danger Symbol indicates an imminently hazardous situation that, if not avoided will result in death or serious injury. This signal word is to be limited to the most extreme situations, typically for machine components that, for functional purposes, cannot be guarded.

TRAINING SAFETY

Safety is a primary concern in the design and manufacture of our products. Unfortunately, our efforts to provide safe equipment can be wiped out by a single careless act of an operator.

In addition to the design and configuration of equipment, hazard control and accident prevention are dependent upon the awareness, concern, prudence and proper training of personnel involved in the operation, transport, maintenance and storage of equipment.

It is the operator's responsibility to read and understand ALL Safety and Operating instructions in the manual and to follow them. Accidents CAN be avoided.

Working with unfamiliar equipment can lead to careless injuries. Read this manual and the manual for your tractor before assembling or operating your mower, to acquaint yourself with the machines. It is the finish mower owner's responsibility if this machine is used by any person other than yourself, to make certain that the operator, prior to operating:

- Reads and understands the operator's manuals.
- Is instructed in safe and proper use.

Know the controls and how to stop tractor, engine, and mower quickly in an emergency. Read this manual and the one provided with your tractor.

Train all new personnel and review instructions frequently with existing workers. A person who has not read and understood all operating and safety instructions is not qualified to operate the machine. An untrained operator exposes himself and bystanders to possible serious injury or death.

Do not allow children to operate this machine.

STARTING AND STOPPING SAFETY

Mower operating power is supplied from tractor PTO. Refer to your tractor manual for PTO engagement and disengagement instructions. Always operate the tractor PTO in the 540 rpm speed selection. **DO NOT OVER SPEED!** Know how to stop tractor and mower quickly in case of an emergency.

When engaging PTO, the engine RPM should always be low. Once engaged and ready to start cutting, raise PTO speed to approx. 540 RPM and maintain throughout cutting operation.

Always stop the tractor, set brake, shut off the tractor engine, remove the ignition key, lower implement to the ground and allow cutter blades to come to a complete stop before dismounting tractor. **Never leave equipment unattended with tractor running or with implement in raised position.**

OPERATION SAFETY

The use of this equipment is subject to certain hazards which cannot be protected against by mechanical means or product design. All operators of this equipment must read and understand this entire manual, paying particular attention to safety and operating instructions, prior to using. If there is something in this manual you do not understand, ask your supervisor, or your dealer, to explain it to you.

Most accidents occur because of neglect or carelessness. Keep all helpers and bystanders at least several hundred feet from an operating finish mower. Only properly trained people should operate this machine.

When this machine is operated in populated areas or in other areas where thrown objects could injure persons or property, standard equipment safety chain shielding (which is designed to reduce the possibility of thrown objects) must be installed. **Operation must be stopped when anyone comes within 100 yards(300feet).**

The majority of accidents involve entanglement on the driveline, injury of bystanders by objects thrown by the rotating blades, and operators being knocked off the tractor by low hanging limbs and then being run over by the mower. Accidents are most likely to occur with machines that are loaned or rented to someone who has not read the owner's manual and is not familiar with a finish mower.

Check the tractor master shield over the PTO shaft. Make sure it is in good condition and fastened securely to the tractor. Purchase a new shield if old shield is damaged or missing.

TRANSPORT SAFETY

Review Transport Safety instructions in tractor manual before moving.

Check with local authorities regarding transport on public roads. Obey all applicable laws and regulations.

Make sure the SMV (Slow Moving Vehicle) emblem and all the lights and reflectors that are required by the local highway and transport authorities are in place, are clean, and can be seen clearly by all overtaking and oncoming traffic.

Never have the equipment in operation during transport.

Always travel at a safe speed.

Inflate transport tires to recommended pressure.

Do not drink and drive!

SERVICE AND MAINTENANCE SAFETY

Stop engine, set brake, remove ignition key, and wait for all moving parts to stop before servicing, adjusting, repairing, or unplugging.

Support the equipment with blocks or safety stands before working beneath it.

Follow good shop practices including:

- Keep service area clean and dry
- Be sure electrical outlets and tools are properly grounded
- Use adequate light for the job

Use only tools, jacks, and hoists of sufficient capacity for the job. Replace and secure all shields removed during servicing before operating. Use heavy leather gloves to handle sharp objects.

Failure to follow proper procedures when mounting a tire on a wheel or rim can produce an explosion, which may result in serious injury or death.

Do not allow grease or oil to build up on any deck or platform.

Where replacement parts are necessary for periodic maintenance and servicing, genuine factory replacement parts must be used to restore your equipment to original specifications.

The manufacturer will not claim responsibility for use of unapproved parts and/or accessories and other damages as a result of their use.

If equipment has been altered in any way from original design, the manufacturer does not accept any liability for injury or warranty.

A fire extinguisher and first aid kit should be kept readily accessible while performing maintenance on this equipment.

STORAGE SAFETY

Following operation, or when unhooking, stop the tractor, set the brakes, disengage the PTO, shut off the engine and remove the ignition keys.

Store the unit in an area away from human activity.

Do not permit children to play on or around the stored machine.

Make sure all parked machines are on a hard, level surface and engage all safety devices. Support the frame on stands and blocks to provide a secure base.

SAFETY SIGNS

Keep safety signs clean and legible at all times.

Do not paint over, remove or deface any safety signs or warning signs on your equipment.

Observe all safety signs and practice the instruction on them.

Replace safety signs that are missing or have become illegible.

Replaced parts that displayed a safety sign should also display the current sign.

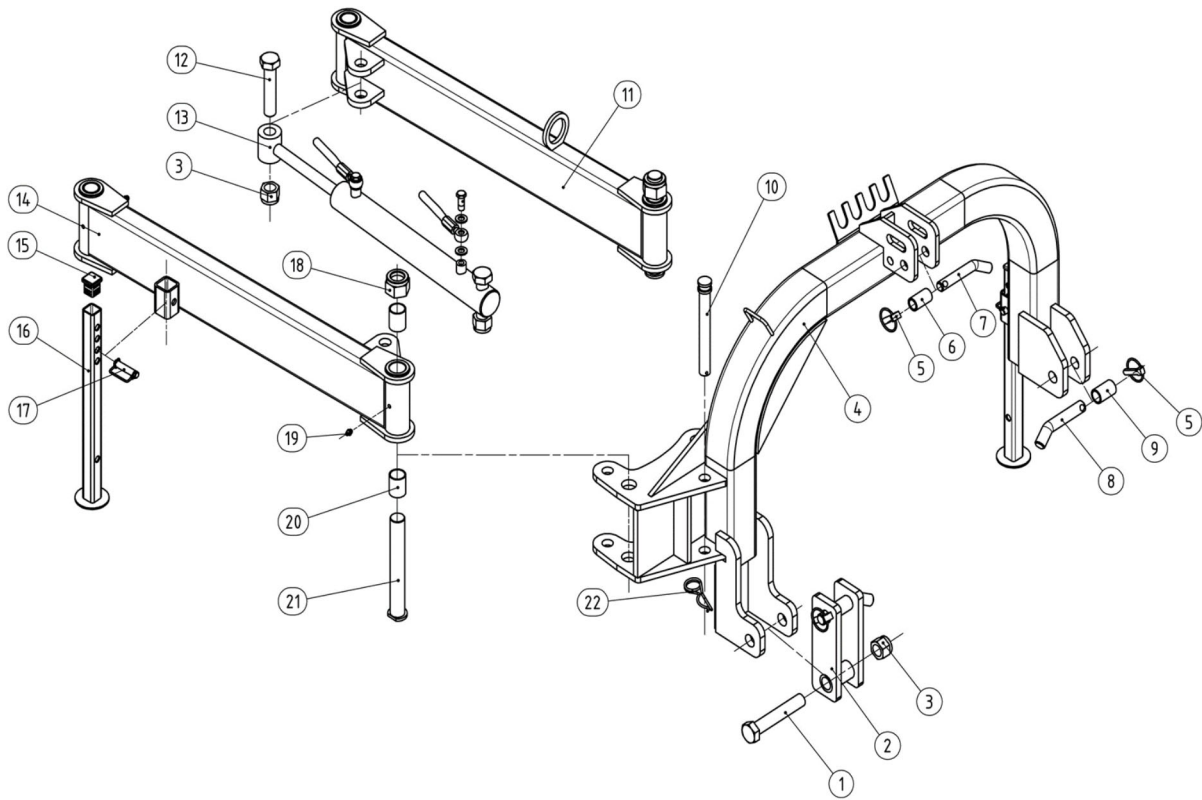
Safety signs are available from your place of purchase.

The safety signs used on the mower and their location are shown on the following sheet along with the part number for the safety signs.



ASSEMBLY

- Carefully remove all parts from crate
- Assemble the Pivot arm on the Mower frame
- Assemble the Pivot arms to the A Frame
- Assemble Hydraulic Hoses and Cylinder



ATTACHMENT TO THE TRACTOR

Carefully read this instruction manual and the manuals of the tractor to ensure all safety precautions are taken . All mowers are built to be attached to any tractor equipped with a three-point lift of the correct category and with suitable ball ends.

Before attaching the equipment to the tractor, make sure that the ground is smooth and flat and that nobody is standing between the tractor and the mower; slowly move the tractor towards the mower by aligning the tractor lifter arms with the two mower coupling side pins; turn the engine off and pull the brake.

Connect the tractor top link to the third upper point by removing the pin located between the two plates, inserting the top link and securing it by means of the pin.

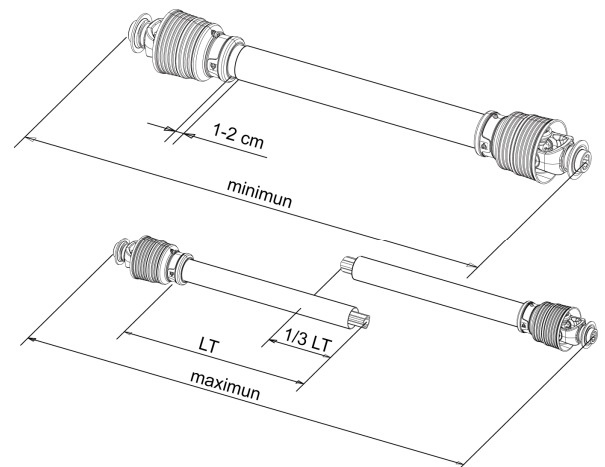
Adjust the top link so that the upper part of the frame is parallel to the ground.
Block all the linking parts by means of the sway chains or arms.

- Connect Hydraulic Quick Connect Couplings to Tractor
- Remove Locking Pivot Pin
- Remove Locking Angling Pin
- Adjust Hydraulic flow Control

Before installing the PTO shaft make sure that the RPM rating and the direction of rotation match those of the tractor. Carefully read the PTO shaft and tractor instructions.
Furthermore, accurately read the instructions of the manufacturer of the PTO shaft and of the tractor.
Before starting any activity, make sure that the guards are installed on the power take off of the tractor and PTO shaft. Make sure that they cover the PTO shaft throughout its length.

Shortening a PTO Driveline

1. With the implement attached to the tractor's three point hitch, and the PTO driveline not installed, separate the PTO driveline. Attach the implement end to the implement and the other end to the tractor PTO input shaft.
2. Raise the implement by using the tractor's hydraulic 3-point hitch to it's maximum lift height.
3. Hold the half shafts next to each other and mark them so each end is approximately 1/2" from hitting the end of the telescopic profiles.
4. Shorten the inner and out guard tubes equally.
5. Shorten the inner and outer profiles by the same length as the guard tubes. Using a rattail file, round off all sharp edges and burrs. Grease the telescopic profile generously before reassembling.



CAUTION

When fully extended, the plastic pipes must overlap by at least 1/3 of the length of the pipes (LT). When retracted, the min. acceptable clearance is 1-2 cm.

OPERATION

Before beginning:

- Check Oil level in Center Gearbox
- Check Oil Level in Drive Tube
- Check Belt Tension
- Rotor Bearings on both side
- Check PTO length (See PTO Section)



**Pivot Pin Locking
Position**



**Pivot Pin Locking
Position**



**Pivot Pin Locking
Position**



**Pivot Pin Locking
Position**

CUTTING HEIGHT ADJUSTMENT

The cutting height of the equipment depends on the position of the rear Roller..
Both side are set at the same height..

To adjust the cutting height on the mowers loosen pivot bolt (do not remove) and reposition the bolts holding the Roller to the desired height.



Adjusting Belt Tension

In the mowers it is necessary to adjust the belt tension as they stretch; the correct belts tensioning ensures that the machine works correctly.

To adjust the belts tension:

- Remove Belt shielding
- Loosen (do not remove hardware holding Gearbox support in place)
- Tighten belt by turning nut on Belt Adjustment plate)
- Retighten Gearbox support hardware



TORQUE SPECIFICATION

For correct hardware tightening on the mower, we suggest the use of suitable torque wrench and the applicable torque as listed in the table below:

M-THREADED SCREW/BOLTS				
Bolt grade				
Thread	8.8		10.9	
	Nm	Lb-ft	Nm	Lb-ft
M6	11	8.5	17	12
M8	28	20	40	30
M10	55	40	80	60
M12	95	70	140	105
M14	150	110	225	165
M16	240	175	305	225
M18	330	250	475	350

MAINTENANCE

Maintenance is crucial for the working life and efficiency of any agricultural equipment. If the equipment is properly maintained and operated, a long working life and operator safety are assured.

The maintenance intervals indicated in this booklet are provided as a mere reference and are related to normal working conditions; changes may occur depending on the type of activities, environmental dust, seasonal factors, etc.

Before beginning

Check Oil level in Center Gearbox and Drive Tube.. Grease Rotor Bearings

After 8 Hours

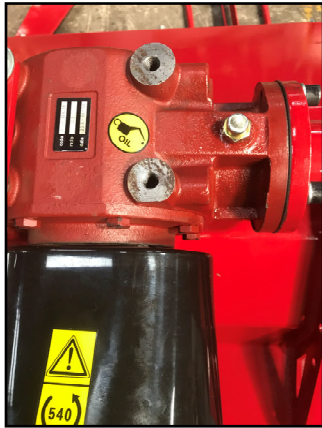
Check Oil Level in Center Gearbox

Check Hardware for tightness

After 30 hours

Check Hardware for tightness

Check Belt tension and wear



Left: Center Gearbox

Right: Drive Tube



Left: Left Rotor Bearing

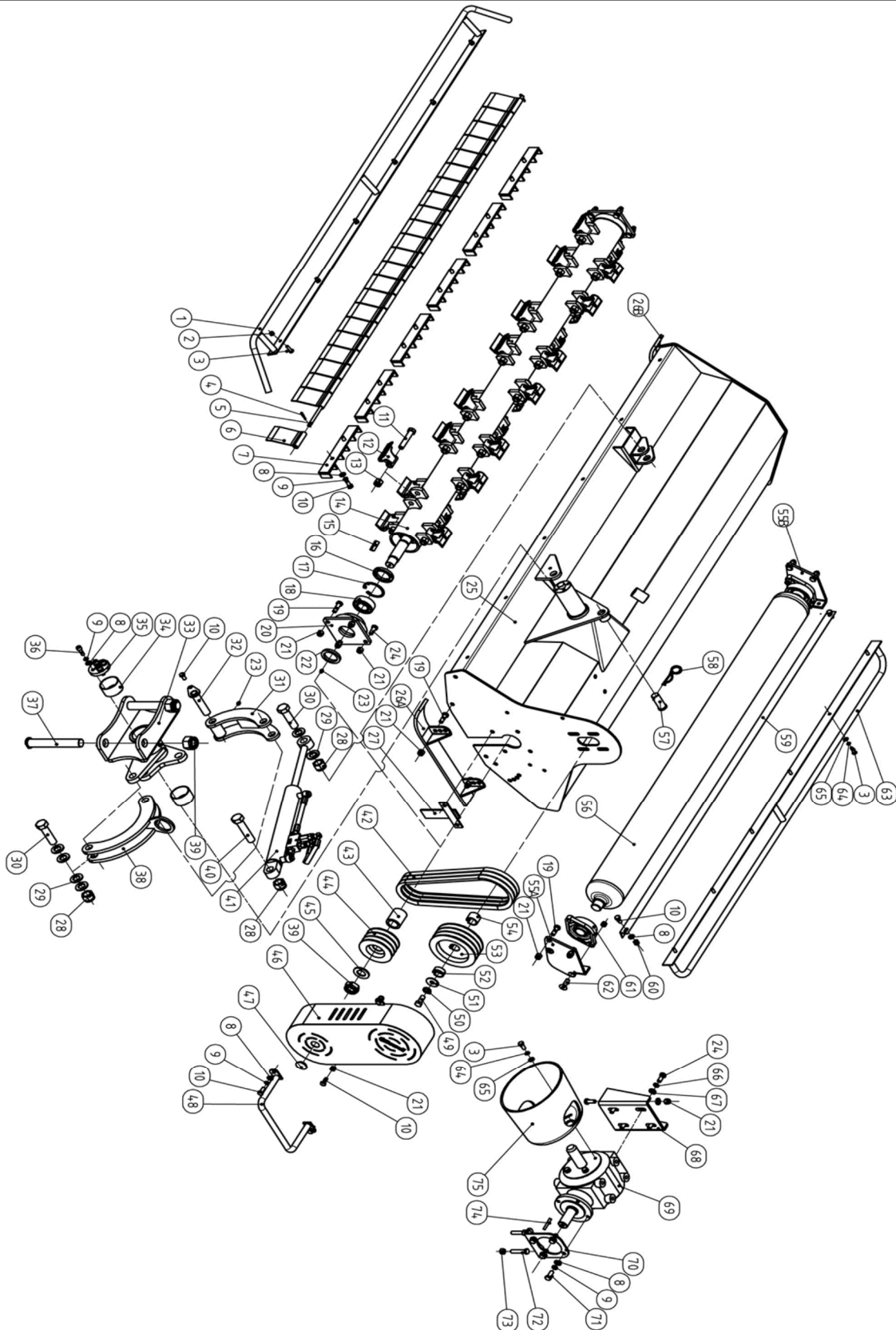
Right: Right Rotor Bearing

Parts Breakdown

BCRL

BCRM

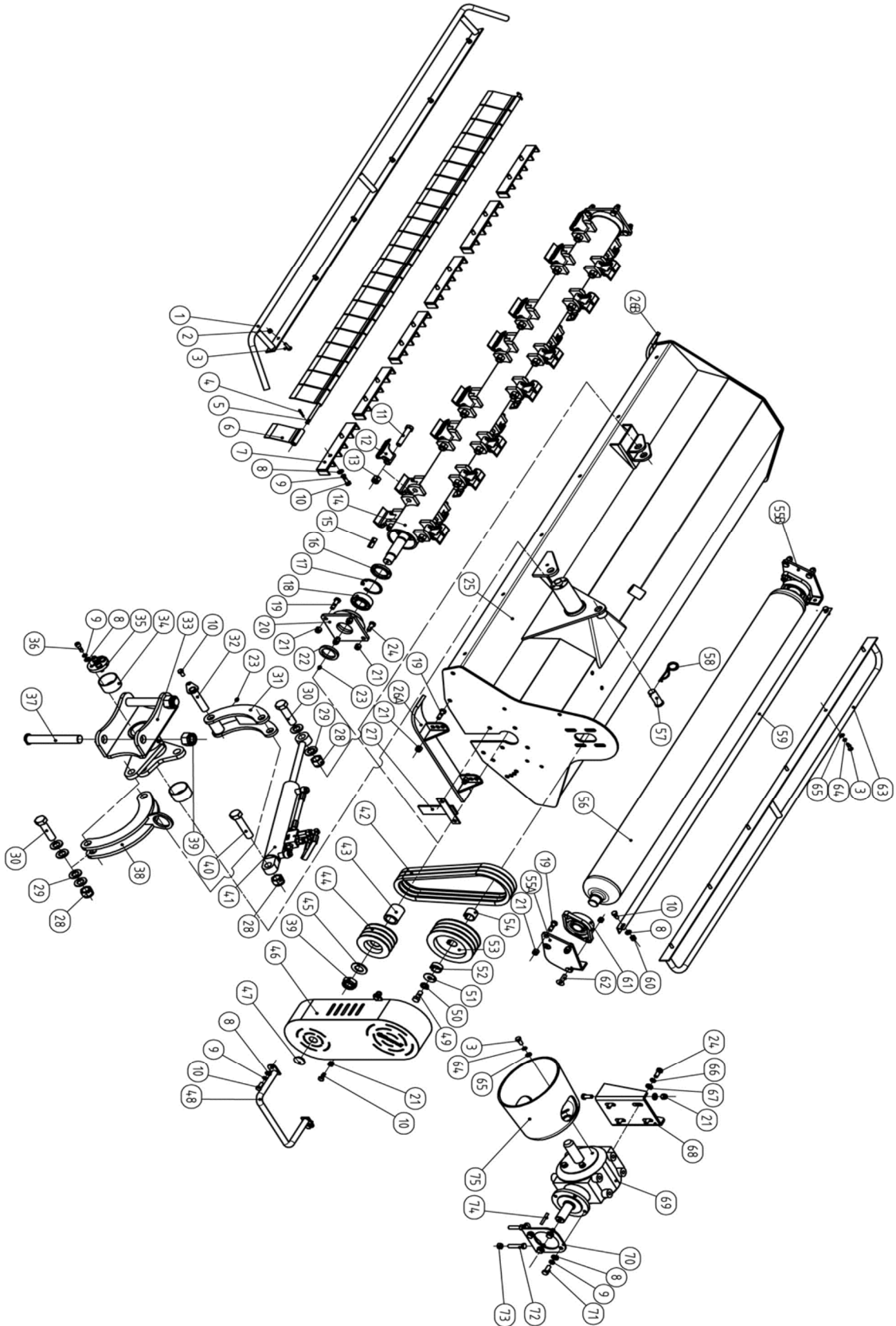
Flail Mower BCRM



Flail Mower BCRM

No			Description	QTY
1	26.026.033	EFGC-ME-023	front safety bar for EFGC135	1
	26.026.024		front safety bar for EFGC155	
	26.026.029		front safety bar for EFGC175	
2	03.14.002	GB/T 889.1-2000	locking nut	6
3	03.18.01.032	GB/T 5783-2000	full thread hexagon head bolt M8x25	6
4	03.36.018		cotter pin 4x25	2
5	21.077.010	EF175-106	protection plate shaft for EFGC135	1
	21.077.008		protection plate shaft for EFGC155	
	21.077.009		protection plate shaft for EFGC175	
6	54.18.037.007	EF175-132, EF175-133	Protection plate 72mm width,2mm thick- ness	N
	54.18.037.009		Protection plate with gap 72mm width,2mm thickness	N
	54.18.037.010		Protection plate 51mm width,2mm thick- ness	N
	54.18.037.011		Protection plate 43mm width,2mm thick- ness	N
7	26.065.011	EFGC-ME-020	counter knife	6
8	03.04.003	GB/T 97.2-1985	flat washer Φ10	24
9	03.09.01.003	GB/T 93-1987	spring washer Φ10	22
10	03.18.01.003	GB/T 5783-2000	full thread hexagon head bolt M10x25	19
11	03.18.01.192	GB/T 5782-2000	hexagon head bolt M16x85	28
12	24.99.001		800gr forging gavalized hammer	28
13	03.14.006		locking nut M16	28
14	26.005.147	EFGC-ME-012	EFGC135 rotor shaft	1
	26.005.143		EFGC155 rotor shaft	
	26.005.145		EFGC175 rotor shaft	
15	03.13.015		key 10x8x30	1
16	03.02.019		oil seal 50x72x8	2
17	03.30.012		circlip for hole Φ72	2
18	03.26.161		spherical ball bearing 2207	2
19	03.18.01.014	GB/T 5783-2000	full thread hexagon head bolt M12x40	14
20	26.043.004	EFGC-ME-014	rotor bearing seat	2
21	03.14.004		locking nut M12	24
22	03.02.045		oil seal 50x68x8	1
23	03.25.009		grease nipple M8x1	4
24	03.18.01.012	GB/T 5783-2000	full thread hexagon head bolt M12x30	8
25	26.002.200	BCRM-011	BCRM135 mower body	1
	26.002.206		BCRM155 mower body	
	26.002.189		BCRM175 mower body	

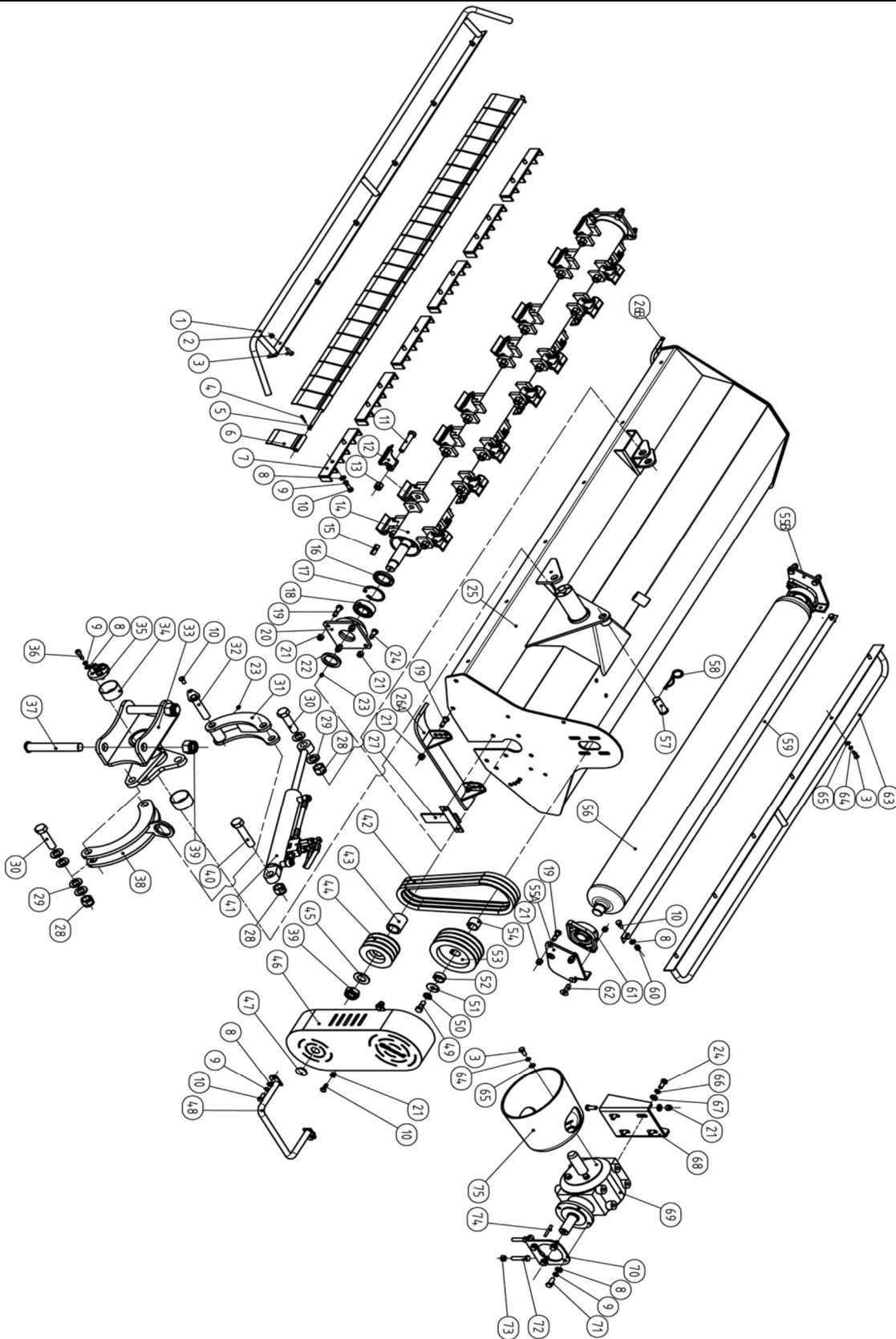
Flail Mower BCRM



Flail Mower BCRM

No			Description	QTY
26	26.026.026	EFGC-ME-016	left skid	1
	26.026.026		right skid	1
27	26.018.020	EFGC-ME-021	T plate	1
28	03.14.014	GB/T 889.1-2000	locking nut M24	3
29	03.04.022	GB/T 97.2-1985	flat washer Φ 24	6
30	03.18.01.177	GB/T 5783-2000	full thread hexagon head bolt M24x90	2
31	26.011.012	BCRM-015	turning frame 2	1
32	26.015.009	BCRM-020	turing pivot	1
33	26.011.010	BCRM-013	turning frame 1	1
34	03.26.164		oilless bearing 63x68x40	2
35	54.18.014.019	BCRL125-104	locking plate	1
36	03.18.06.027	GB/T 70.1-2000	hexagon socket cap head screws M10x25	4
37	21.088.096	BCRM-101	pin for the arm	2
38	26.011.011	BCRM-014	turning frame 3	1
39	03.14.033	GB/T 889.1-2000	locking nut M30	3
40	03.18.01.185	GB/T 5782-2000	hexagon head bolt M24x110	1
41			turning hydraulic system (cylinder, pipe, valve)	1
42	04.24.005		belt BX 17x1030	3
43	21.084.057	EFGC-ME-102	spacer	1
44	21.075.005	EFGC-ME-105	lower pulley 4 belt version	1
	21.075.002		upper pulley 3 belt version	
45	03.04.011	GB/T 97.2-1985	flat washer Φ 30	1
46	26.006.015	EFGC-ME-022	belt cover	1
47	04.11.004		rubber cover Φ 35	1
48	26.026.027	BCRM-021	belt cover protection bar	1
49	03.18.01.020	GB/T 5783-2000	full thread hexagon head bolt M14x35	1
50	03.09.01.005	GB/T 93-87	spring washer Φ 14	1
51	03.04.036	GB/T 96.1-2000	big flat washer Φ 14	1
52	21.116.038	BCRM-106	bushing 2	1
53	21.063.006	BCRM-104	BCRM135/155 upper pulley (3 belt)	1
	21.063.003		BCRM175 upper pulley (4 belt)	
54	21.116.037	BCRM-105	bushing 1	1
55A	54.18.031.009	EFGC-ME-107	left roller bearing bracket	1
55B	54.18.031.009		right roller bearing bracket	1

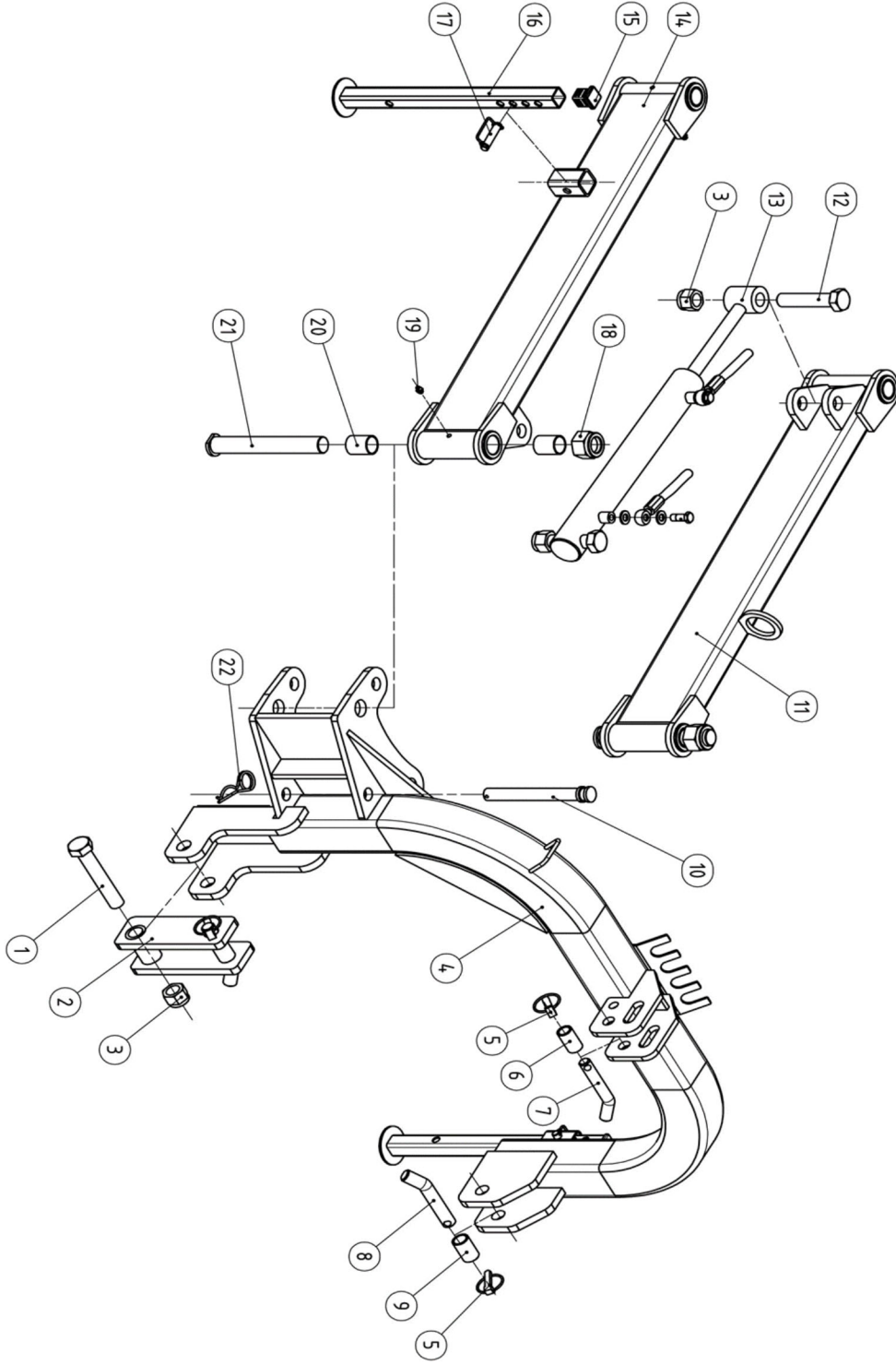
Flail Mower BCRM



Flail Mower BCRM

No			Description	QTY
56	26.063.011		BCRM135 roller	1
	26.063.009		BCRM155 roller	
	26.063.010		BCRM175 roller	
57	21.088.118	BCRM-107	safety pin	1
58	03.35.013		R销	1
59	21.071.004	EFGC-ME-103	EFGC135 scraper	1
	21.071.002		EFGC155 scraper	
	21.071.003		EFGC175 scraper	
60	03.14.003	GB/T 889.1-2000	locking nut M10	2
61	03.26.167		inserted bearing with housing UCFLU207	2
62	03.18.06.009	GB/T 70.3-2000	hexagon socket countersunk head cap screws M12x40	4
63	26.026.035	EFGC-ME-019	EFGC135 rear safety bar	1
	26.026.025		EFGC155 rear safety bar	
	26.026.028		EFGC175 rear safety bar	
64	03.09.01.002	GB/T 93-1987	spring washer Φ8	10
65	03.04.002	GB/T 97.2-1985	flat washer Φ8	10
66	03.09.01.004	GB/T 93-1987	spring washer Φ12	6
67	03.04.004	GB/T 97.2-1985	flat washer Φ12	6
68	26.036.005	BCRM-012	gear box bracket	1
69	29.01.033		BCRM gear box	1
70	26.004.008	BCRL125-020	adjusting plate	1
71	03.18.01.012	GB/T 5783-2000	full thread hexagon head bolt M10x30	4
72	03.18.01.123	GB/T 5783-2000	full thread hexagon head bolt M12x1.25x50	2
73	03.11.01.003	GB/T 6170-2000	common nut M12x1.25	2
74			key 10x8x65 on the gear box	1
75	04.18.002		PTO cover	1

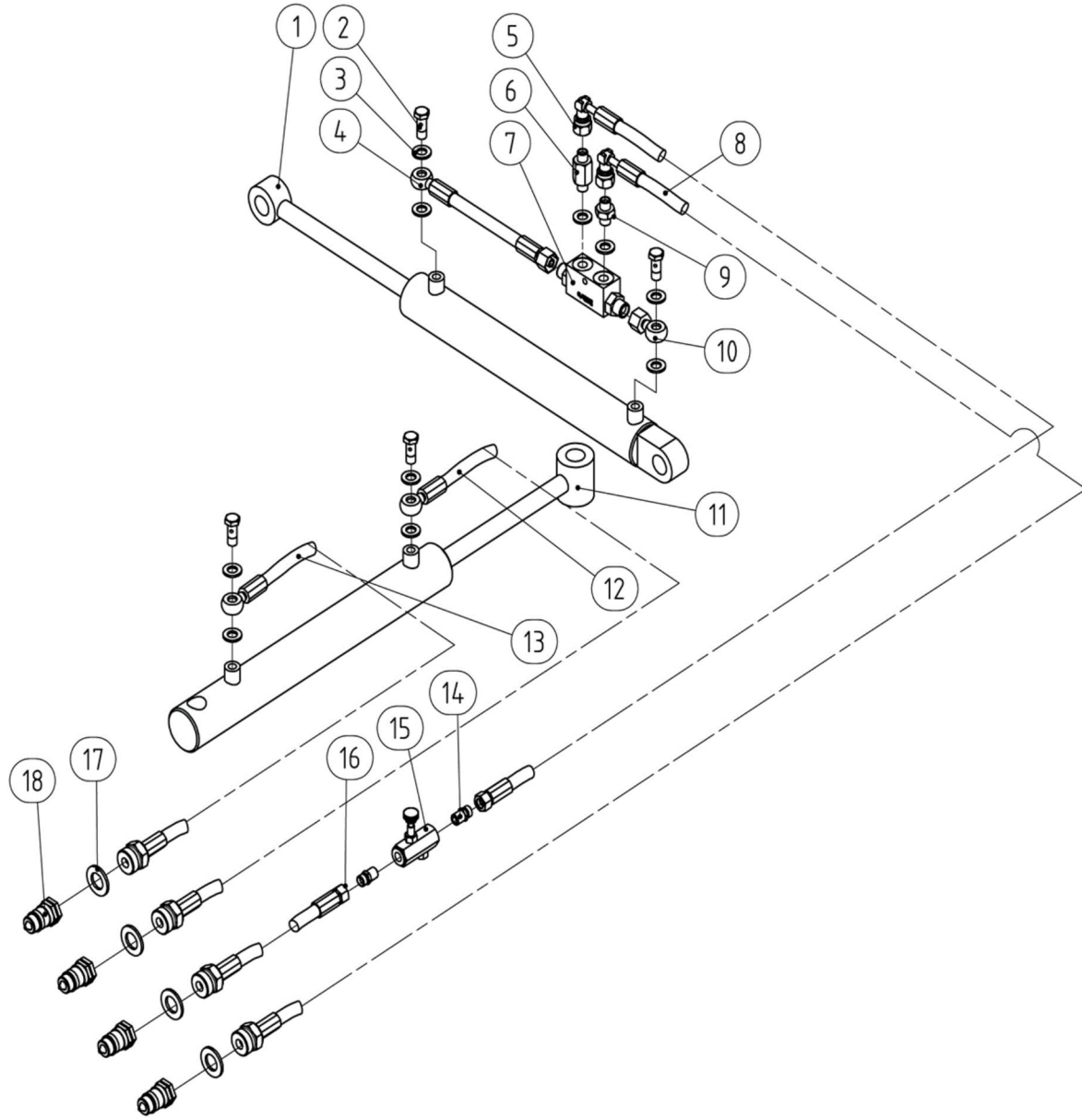
Flail Mower BCRM



Flail Mower BCRM

No		old Part No	Name & Specification	QTY
1	03.18.01.185	GB/T 5782-2000	hexagon head bolt M24x140	1
2	26.001.039	BCRM-022	small extra hitch	1
3	03.14.014	GB/T 889.1-2000	locking nut M24	3
4	26.001.038	BCRM-018	3 point hitch	1
5	03.35.008		linch pin	3
6	21.084.059	EFGC-ME-112	Cat 2 bushing for upper hitch	1
7	03.31.01.040	EFGC-ME-110	upper pin	1
8	03.31.01.041	EFGC-ME-111	lower hitch bushing	2
9	21.002.011	EFGC-ME-113	Cat 2 bushing for lower hitch	2
10	21.088.110	BCRM-108	safety pin for swing	1
11	26.085.006	BCRM-016	arm 1	1
12	03.18.01.151	GB/T 5782-2000	hexagon head bolt M24x110	2
13			swing hydraulic system (cylinder and pipe)	1
14	26.085.007	BCRM-017	arm 2	1
15	03.99.056	EF175-126	plug	2
16	26.010.019	BCRM-019	support feet	2
17	03.35.012		D pin Φ 12	2
18	03.14.033	GB/T 889.1-2000	locking nut M30	4
19	03.25.009		grease nipple M8x1	4
20	03.26.163		oilless bearing 34x30x40	8
21	21.088.096	BCRM-101	pin	2
22	03.35.013		R销	1

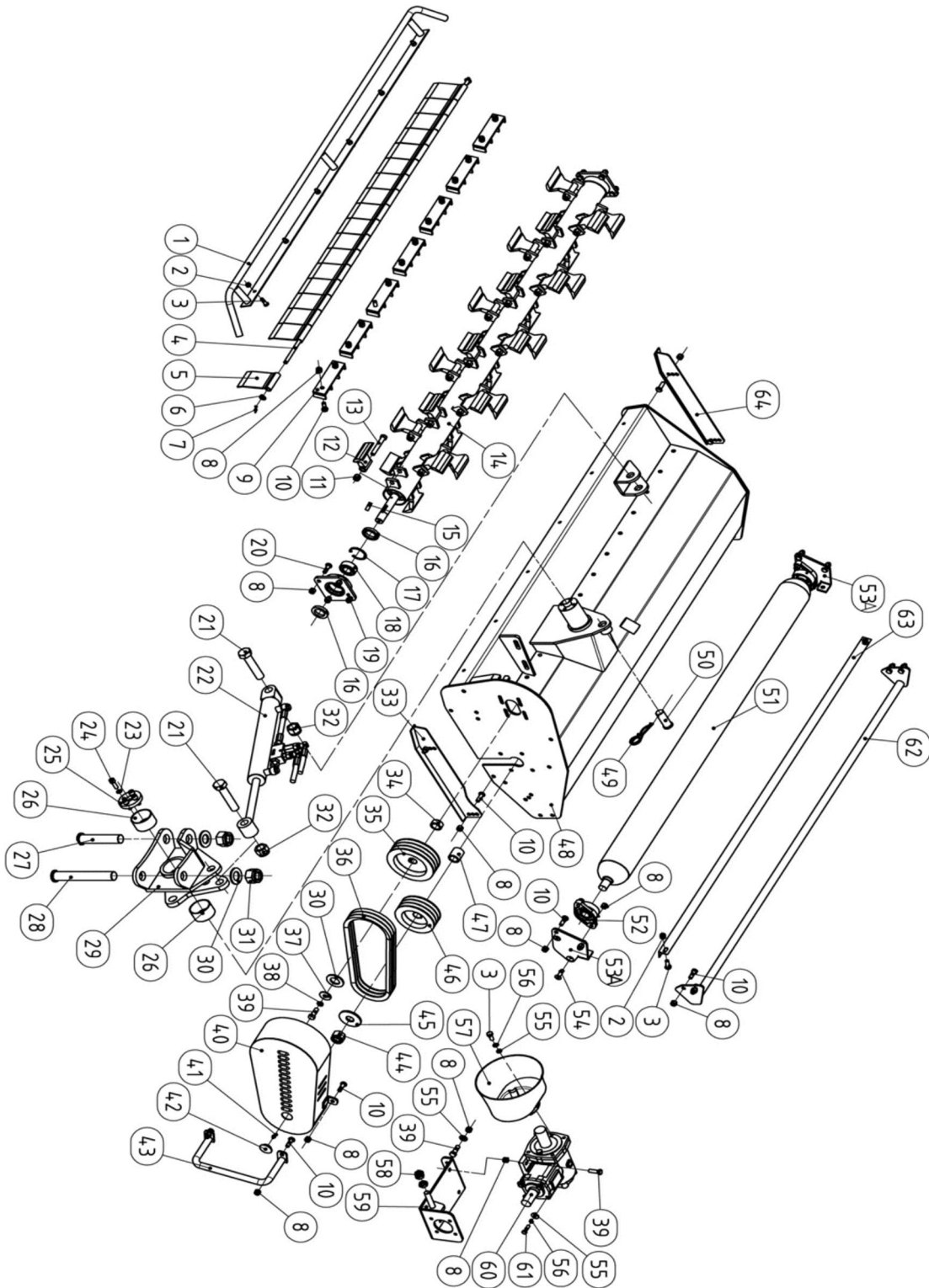
Flail Mower BCRM



Flail Mower BCRM

No		old Part No	Name & Specification	QTY
1	60.01.002	BCRM-102	turning cylinder	1
2	03.18.07.003		hexagon fit bolts M12x1.25x30	4
3	03.10.002		combined washer 12	8
4	03.60.08.022	BCRM-116	short pipe for safety valve	1
5	03.60.08.027	BCRM-111	oil pipe 1 on turning cylinder	1
6	03.60.09.023	BCRM-115	adapter 1 on safety valve	1
7	03.60.10.013	BCRM-112	safety valve	1
8	03.60.08.023	BCRM-113	oil pipe 2 on turning cylinder	1
9	03.60.09.022	BCRM-114	adapter 2 on safety valve	1
10	03.60.09.029	BCRM-117	adapter 3 on safety valve	1
11	60.01.003	BCRM-103	swing cylidner	1
12	03.60.08.024	BCRM-119	oil pipe 1 for swing cylinder	1
13	03.60.08.025	BCRM-120	oil pipe 2 for swing cylinder	1
14	03.60.09.028	BCRM-110	adapter on flow speed valve	2
15	03.60.10.014		flow speed valve	1
16	03.60.08.026	BCRM-109	oil pipe 3 on turning cylinder	1
17	03.10.011		washer G1/2	4
18	03.60.09.005		quick release coupling G1/2	4

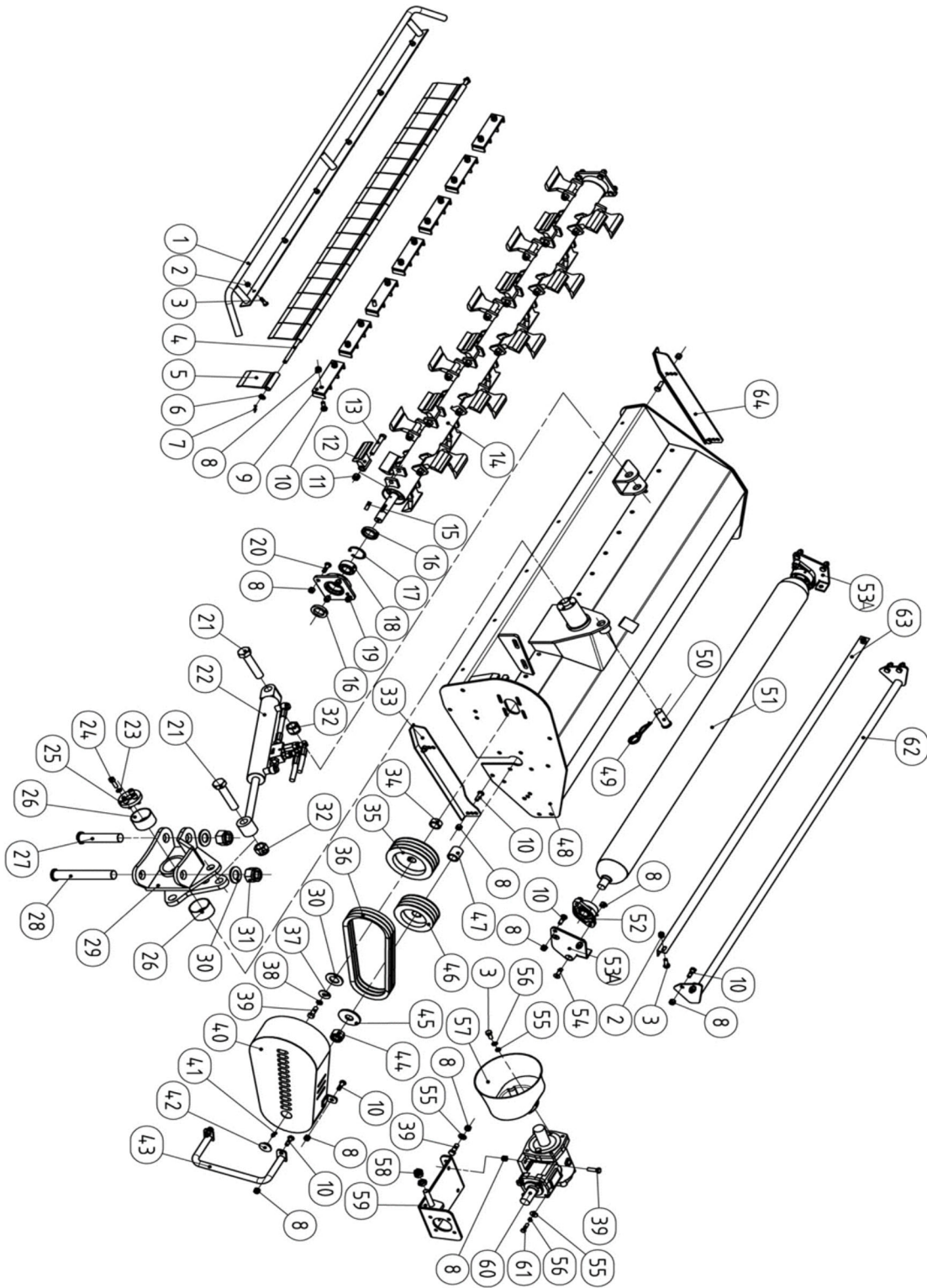
Flail Mower BCRL



Flail Mower BCRL

No			Description	QTY
1	26.026.044	EFGC-ME-023	front safety bar for EF095	1
	26.026.038		front safety bar for EF115	
	26.026.035		front safety bar for EF135	
	26.026.024		front safety bar for EF155	
	26.026.029		front safety bar for EF175	
2	03.14.002		locking nut M8	6
3	03.18.01.033		full thread hexagon head bolt M8x25	10
4	21.077.013	EF175-106	protection plate shaft for EF95	1
	21.077.012		protection plate shaft for EF115	
	21.077.010		protection plate shaft for EF135	
	21.077.008		protection plate shaft for EF155	
	21.077.009		protection plate shaft for EF175	
5	54.18.037.007		Protection plate 72mm width,2mm thickness	20
	54.18.037.009		Protection plate with gap 72mm width,2mm thickness	
	54.18.037.010		Protection plate 51mm width,2mm thickness	
	54.18.037.011		Protection plate 43mm width,2mm thickness	
6	03.04.003		flat washer Φ 10	2
7	03.36.018		cotter pin 4x25	2
8	03.14.003		locking nut M10	41
9	26.065.012	EFM-015	counter knife	6
10	03.18.01.004		full thread hexagon head bolt M10x30	28
11	03.14.004		locking nut M12	24
12	24.99.002		400gr forging gavalized hammer	24
13	03.18.01.188		full thread hexagon head bolt M12x80	24
14	26.005.152		BCRL115 rotor shaft	1
	26.005.153		BCRL135 rotor shaft	
	26.005.146		BCRL155 rotor shaft	
15	03.13.016		key 8x28	1
16	03.02.037		oil seal 50x35x8	3
17	03.30.027		circlip for hole Φ 52	2
18	03.26.165		spherical ball bearing 2205	2
19	26.043.005	EFM-014	rotor bearing seat	2
20	03.18.06.029		full thread hexagon head bolt M8x35	8

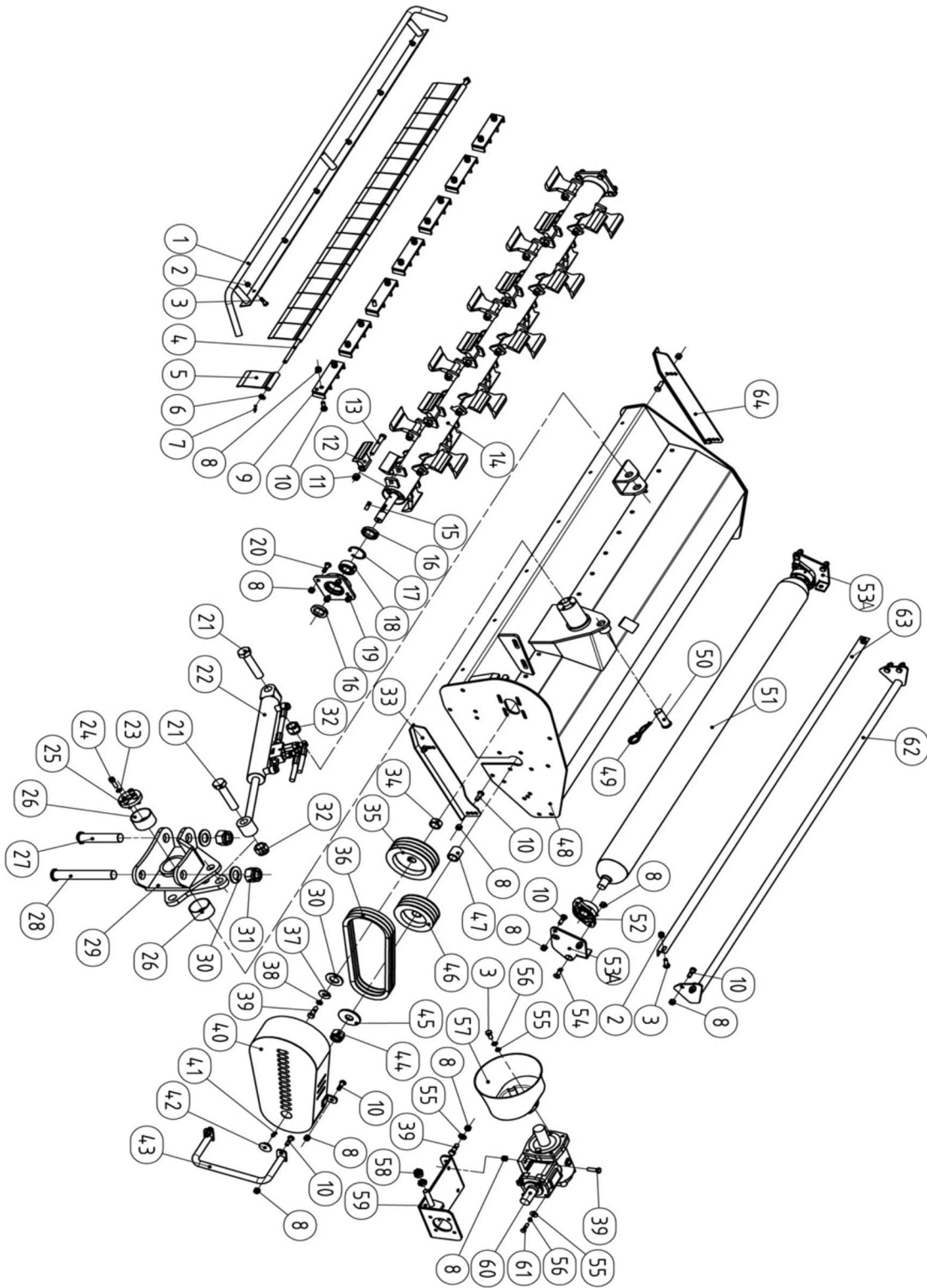
Flail Mower BCRL



Flail Mower BCRL

No			Description	QTY
21	03.18.01.151		full thread hexagon head bolt M16x110	2
22			BCRL hydraulic system	1
24	03.09.01.003	GB 6191-86	hexagon socket cap head screws M10x35	8
23	03.18.06.027		spring washer Φ 10	4
25	21.068.036	BCRL125-104	locking board	1
26	03.26.164		Oiless bearing 63*68*40	2
27	21.088.124	BCRS-104	pin	1
28	21.088.096	BCRM-101	pin for the arm	1
29	26.011.013	BCRS-012	3 point hitch	1
30	03.04.011		flat washer Φ 30	3
31	03.14.033		locking nut M30	2
32	03.14.014		locking nut M16	2
33	26.026.030	EF-M-019	left skid	1
34	21.116.052	BCRS-105	bushing	1
35	21.063.010	BCRS-101	2 belt pulley for BCRL115/135	1
	21.063.009		3 belt pulley for BCRL155	
36	04.24.009		belt BX 17x965	3
37	03.04.004		flat washer Φ 12	1
38	03.09.01.004		spring washer Φ 12	1
39	03.18.01.013		full thread hexagon head bolt M12x35	3
40	26.006.016	EF-M-018	belt cover	1
41	03.25.009		grease nipple M8x1	2
42	04.11.004		rubber cover Φ 30	1
43	26.026.050	BCRS-017		1
44	21.071.006		locking nut M24	1
45	21.071.004		flat washer Φ 24	1
46	21.071.002	EFM-103	lower pulley 2 belts version for EF95/115/135	1
	03.04.037		lower pulley 3 belts version for EF155/175	
47	21.075.006	EF-M-111	bushing	1
48	21.075.004	BCRS-011	BCRL115 mower body	1
	21.084.061		BCRL135 mower body	
	26.002.220		BCRL155 mower body	
49	26.002.221		split pin Φ 4	1
50	26.002.222	BCRM-107	safety pin	1

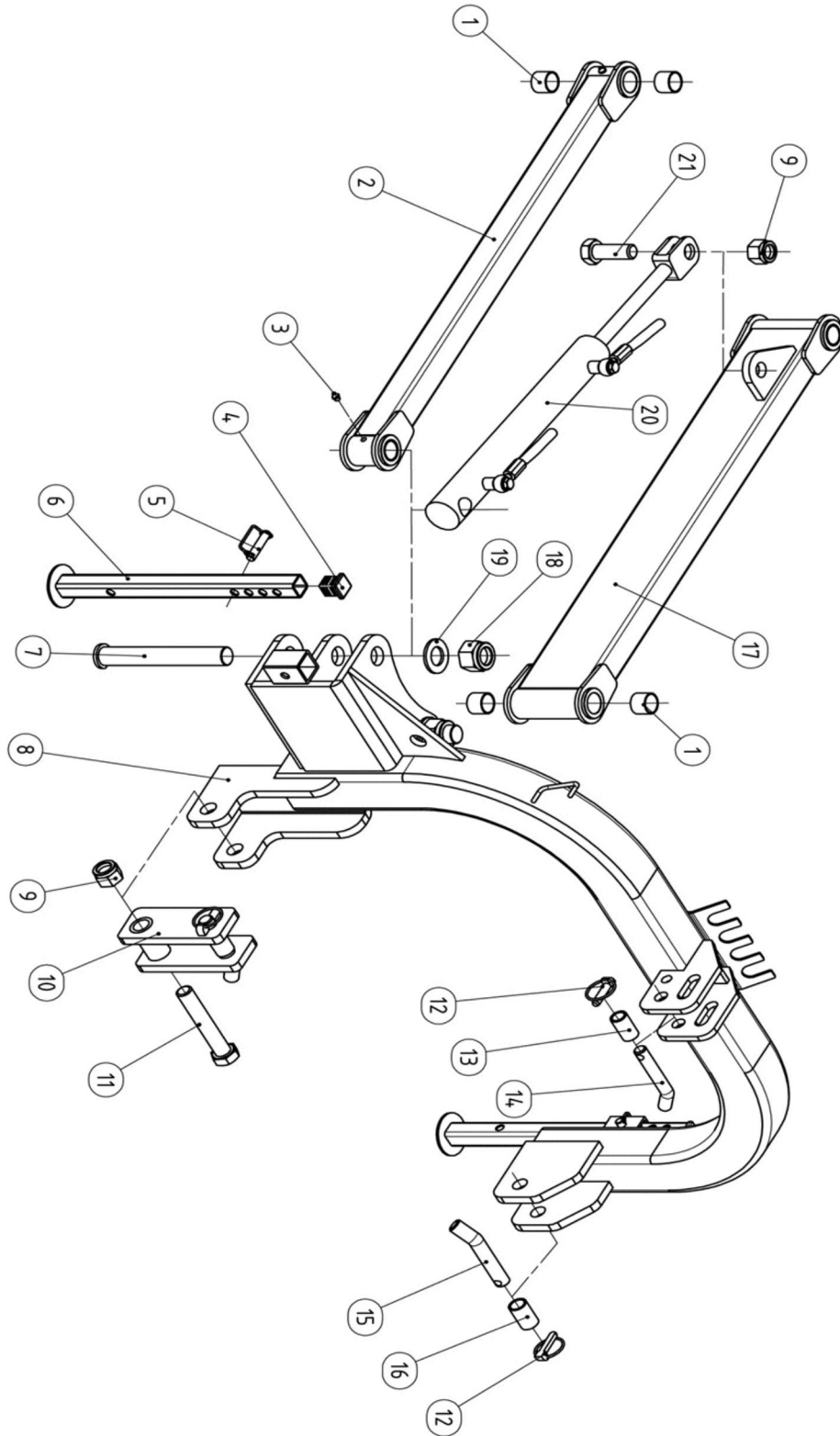
Flail Mower BCRL



Flail Mower BCRL

No			Description	QTY
51	03.35.013	EFM-017	BCRL115 roller	1
	21.088.118		BCRL135 roller	
	26.063.015		BCRL155 roller	
52	26.063.016		inserted bearing with housing UCFLU205	2
53A	26.063.008	EF-M-104	roller left bracket	1
53B	03.26.116		roller right bracket	1
54	21.042.007		hexagon socket countersunk head cap screws M10x35	4
56	21.042.007		spring washer Φ 8	6
55	03.18.06.029		flat washer Φ 8	8
57	03.09.01.002		EF mower PTO cover	1
58	03.04.002		hexagon thin nut M16	3
59		BCRS-016	gear box bracket	1
60	03.11.01.063		EF gear box	1
61	26.036.008		full thread hexagon head bolt M8x35	4
62	21.047.041		BCRL115 rear safety bracket	1
	03.18.01.052		BCRL135 rear safety bracket	
	26.026.041		BCRL155 rear safety bracket	
63	26.026.042		BCRL115 scraper	1
	26.026.032		BCRL135 scraper	
	26.026.031		BCRL155 scraper	
64	02.EF.00.068	EFM-020	right skid	1

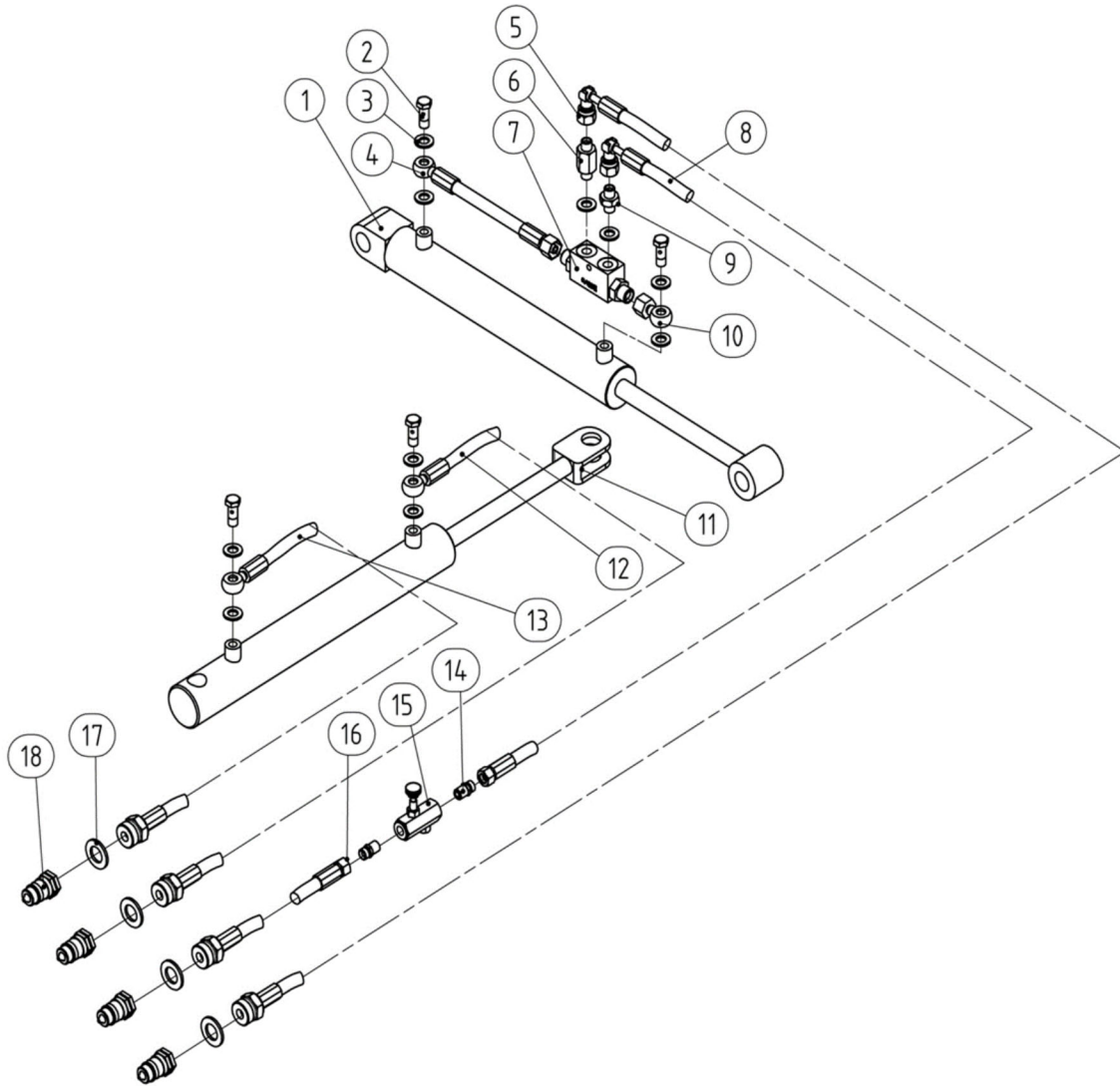
Flail Mower BCRL



Flail Mower BCRL

No			Description	QTY
1	03.26.163		oilless bearing 34x30x25	8
2	26.085.009	BCRS-014	swing arm 2	1
3	03.25.009		grease nipple M8x1	4
4	03.99.056	EF175-126	plug	2
5	03.35.012		D pin Φ 12	2
6	26.010.019	BCRM-019	support feet	2
7	21.088.096	BCRM-101	pin for the arm	2
8	26.001.043	BCRS-015	BCRL hitch	1
9	03.14.014		locking nut M24	2
10	26.001.044	BCRS-018	extra hitch	1
11	03.18.01.185		hexagon head bolt M24x140	1
12	03.35.008		linch pin	3
13	21.084.059	EFGC-ME-112	Cat 2 bushing for upper hitch	1
14	03.31.01.040	EFGC-ME-110	upper pin	1
15	03.31.01.041	EFGC-ME-111	lower hitch bushing	2
16	21.002.011	EFGC-ME-113	Cat 2 bushing for lower hitch	2
17	26.085.008	BCRS-013	swing arm 1	1
18	03.14.033		locking nut M30	2
19	03.04.011		flat washer Φ 30	2
20			swing cylinder system	1
21	03.18.01.195		full thread hexagon head bolt M24x65	1

Flail Mower BCRL



Flail Mower BCRL

No			Description	QTY
1	60.01.006	BCRS-103	turning cylinder	1
2	03.18.07.003		hexagon fit bolts M12x1.25x30	4
3	03.10.002		combined washer 12	8
4	03.60.08.022	BCRM-116	short pipe for safety valve	1
5	03.60.08.027	BCRM-111	oil pipe 1 on turning cylinder	1
6	03.60.09.023	BCRM-115	adapter 1 on safety valve	1
7	03.60.07.002	BCRM-112	safety valve	1
8	03.60.08.023	BCRM-113	oil pipe 2 on turning cylinder	1
9	03.60.09.022	BCRM-114	adapter 2 on safety valve	1
10	03.60.09.030	BCRM-117	adapter 3 on safety valve	1
11	60.01.005	BCRS-102	swing cylinder	1
12	03.60.08.024	BCRM-119	oil pipe 1 for swing cylinder	1
13	03.60.08.025	BCRM-120	oil pipe 2 for swing cylinder	1
14	03.60.09.028	BCRM-110	adapter on flow speed valve	2
15	03.60.10.014		flow speed valve	1
16	03.60.08.026	BCRM-109	oil pipe 3 on turning cylinder	1
17	03.10.011		washer G1/2	4
18	03.60.09.005		quick release coupling G1/2	4

LIMITED WARRANTY

Tar River Equipment warrants to the original purchaser of any new piece of machinery from Tar River Equipment, purchased from an authorized Tar River Equipment dealer, that the equipment be free from defects in material and work-manship for a period of one (1) year for non-commercial, state, and municipalities' use, ninety (90) days for commercial use from date of retail sale. Warranty for rental purposes is thirty (30) days. The obligation of Tar River Equipment to the purchaser under this warranty is limited to the repair or replacement of defective parts.

A four (4) year extended **Gearbox Limited Warranty** is provided for certain models at the end of the standard one (1) year warranty period. This warranty is not provided for commercial or rental uses. The extended warranty provides for the replacement of parts only. Not covered are oil seals or any damages to the gearbox due to lack of lubrications.

Replacement or repair parts installed in the equipment covered by this limited warranty are warranted for ninety (90) days from the date of purchase of such part or to the expiration of the applicable new equipment warranty period, whichever occurs later. Warranted parts shall be provided at no cost to the user at an authorized Tar River Equipment dealer during regular working hours. Tar River Equipment reserves the right to inspect any equipment or parts which are claimed to have been defective in material or work-manship.

This limited warranty does not apply to and excludes wear items such as shear pins, tires, tubes knives, blades or other wear items. Oil or grease is not covered by this warranty.

All obligations of Tar River Equipment under this limited warranty shall be terminated if:

Proper service is not performed on the machine
The machine is modified or altered in any way.
The machine is being used or has been used for purposes other than those for which the machine was intended.

DISCLAIMER OF IMPLIED WARRANTIES & CONSEQUENTIAL DAMAGES

Tar River Equipment obligation under this limited warranty, to the extent allowed by law, is in lieu of all warranties, implied or expressed, including implied warranties of merchantability and fitness for a particular purpose and any liability for incidental and consequential damages with respect to the sale or use of the items warranted. Such incidental and consequential damages shall include but not be limited to: transportation charges other than normal freight charges; cost of installation other than cost approved by Tar River Equipment; duty; taxes; charges for normal service or adjustment; loss of crops or any other loss of income; rental of substitute equipment, expenses