



SSC-SSS-SP Spin Fertilizer Spreader

Operator's Manual Parts Breakdown



TABLE OF CONTENTS

INTRODUCTION	2
SAFETY	2
SAFETY SIGNAL WORDS	3
GENERAL SAFETY GUIDELINES	3
SAFETY DECAL CARE.....	4
BEFORE OPERATION.....	4
DURING OPERATION	5
HIGHWAY AND TRANSPORT OPERATIONS	5
FOLLOWING OPERATION	6
PERFORMING MAINTENANCE.....	6
ASSEMBLY	7
OPERATION.....	9
SERVICE.....	9
SPREADING CHARTS	10
PARTS BREAKDOWN—SSC	11-12
PARTS BREAKDOWN —SSS—SP	13-17
LIMITED WARRANTY	16

INTRODUCTION

Thank you for purchasing your Tar River Equipment Pendular Spreader. Your spreader is design to be used on 540 rpm tractors. It is important to properly maintain and keep in place all safety guards and shields that came with your tiller.

SAFETY

Read and understand this manual and all safety signs before operating and maintaining. Review the safety instructions and precautions annually.

TAKE NOTE! THIS SAFETY ALERT SYMBOL FOUND THROUGHOUT THIS MANUAL IS USED TO CALL YOUR ATTENTION TO INSTRUCTIONS INVOLVING YOUR PERSONAL SAFETY AND THE SAFETY OF OTHERS. FAILURE TO FOLLOW THESE INSTRUCTIONS CAN RESULT IN INJURY OR DEATH.



THIS SYMBOL MEANS

**ATTENTION!
BECOME ALERT!
YOUR SAFETY IS INVOLVED!**



SAFETY SIGNAL WORDS

Note the use of the signal words DANGER, WARNING and CAUTION with the safety messages. The appropriate signal word for each has been selected using the following guidelines:



DANGER: Indicates an imminently hazardous situation that, if not avoided, will result in death or serious injury. This signal word is to be limited to the most extreme situations typically for machine components which, for functional purposes, cannot be guarded.



WARNING: Indicates a potentially hazardous situation that, if not avoided, could result in death or serious injury. This would include all hazards caused by the removal of the safety guards. It may also be used to alert against unsafe practices.



CAUTION: Indicates a potentially hazardous situation that, if not avoided, may result in minor or moderate injury. It may also be used to alert against unsafe practices.



GENERAL SAFETY GUIDELINES

Safety of the operator is one of the main concerns in designing and developing a new piece of equipment. Designers and manufacturers build in as many safety features as possible. However, every year many accidents occur which could have been avoided by a few seconds of thought and a more careful approach to handling equipment. You, the operator, can avoid many accidents by observing the following precautions in this section. To avoid personal injury, study the following precautions and insist those working with you, or for you, follow them.

Replace any CAUTION, WARNING, DANGER or instruction safety decal that is not readable or is missing. Location of such decals is indicated in this booklet.

Do not attempt to operate this equipment under the influence of drugs or alcohol.

Review the safety instructions with all users annually.

This equipment is dangerous to children and persons unfamiliar with its operation. The operator should be a responsible adult familiar with farm machinery and trained in this equipment's operations. **Do not allow persons to operate or assemble this unit until they have read this manual and have developed a thorough understanding of the safety precautions and of how it works.**

To prevent injury or death, use a tractor equipped with a rollover protective structure (ROPS). Do not paint over, remove or deface any safety signs or warning decals on your equipment. Observe all safety signs and practice the instructions on them.

Never exceed the limits of a piece of machinery. If its ability to do a job, or to do so safely, is in question - **DON'T TRY IT.**



SAFETY DECAL CARE

- Always keep the safety signs clean and legible at all times.
- Replace safety signs that are missing or have become illegible.
- Replaced parts that displayed a safety sign should also display the current sign.
- Safety signs are available from your Distributor or Dealer Parts Department or the factory.

How to Install Safety Signs:

- Be sure that the installation area is clean and dry.
- Decide on the exact position before you remove the backing paper.
- Remove the smallest portion of the split backing paper.
- Align the decal over the specified area and carefully press the small portion with the exposed sticky backing in place.
- Slowly peel back the remaining paper and carefully smooth the remaining portion of the decal in place.
- Small air pockets can be pierced with a pin and smoothed out using the piece of decal backing paper.



BEFORE OPERATION

- Carefully study and understand this manual.
- Do not wear loose-fitting clothing, which may catch in moving parts.
- Always wear protective clothing and substantial shoes.
- Assure that all tires are inflated evenly.
- Give the unit a visual inspection for any loose bolts, worn parts or cracked welds, and make necessary repairs. Follow the maintenance safety instructions included in this manual.
- Be sure that there are no tools lying on or in the equipment.
- Do not use the unit until you are sure that the area is clear, especially children and animals.

- Don't hurry the learning process or take the unit for granted. Ease into it and become familiar with your new equipment.
- Practice operation of your equipment and its attachments. Completely familiarize yourself and other operators with its operation before using.
- Use a tractor equipped with a rollover protective structure (ROPS) and fasten your seat belt prior to starting the engine.
- The manufacturer does not recommend usage of tractor with ROPS removed.
- Move tractor wheels to the widest recommended settings to increase stability.
- Securely attach to towing unit. Use a high strength, appropriately sized hitch pin with a mechanical retainer and attach safety chain.
- Do not allow anyone to stand between the tongue or hitch and the towing vehicle when backing up to the equipment.

DURING OPERATION

- Children should not be allowed on the product.
- Clear the area of small children and bystanders before moving the feeder.
- If using a towing unit, securely attach feeder by using a hardened 3/4" pin, a metal retainer, and safety chains if required. Shift towing unit to a lower gear before going down steep downgrades, thus using the engine as a retarding force. Keep towing vehicle in gear at all times. Slow down for corners and rough terrain.
- Make sure you are in compliance with all local and state regulations regarding transporting equipment on public roads and highways. Lights and slow-moving signs must be clean and visible by overtaking or on-coming traffic when feeder is transported.
- Beware of bystanders, **particularly children!** Always look around to make sure that it is safe to start the engine of the towing vehicle or move the unit. This is particularly important with higher noise levels and quiet cabs, as you may not hear people shouting.
- **NO PASSENGERS ALLOWED** - Do not carry passengers anywhere on, or in, the tractor or equipment, except as required for operation.
- Keep hands and clothing clear of moving parts.
- Do not clean, lubricate or adjust your equipment while it is moving.
- When halting operation, even periodically, set the tractor or towing vehicle brakes, disengage the PTO, shut off the engine and **remove the ignition key.**
- Be especially observant of the operating area and terrain - watch for holes, rocks or other hidden hazards. Always inspect the area prior to operation.
- **DO NOT** operate near the edge of drop-offs or banks.
- **DO NOT** operate on steep slopes as overturn may result.
- Operate up and down (not across) intermediate slopes. Avoid sudden starts and stops

HIGHWAY AND TRANSPORT OPERATIONS

- Adopt safe driving practices:
- Keep the brake pedals latched together at all times. **NEVER USE INDEPENDENT BRAKING WITH MACHINE IN TOW AS LOSS OF CONTROL AND/OR UPSET OF UNIT CAN RESULT.**
- Always drive at a safe speed relative to local conditions and ensure that your speed is low enough for an emergency stop to be safe and secure. Keep speed to a minimum.
- Reduce speed prior to turns to avoid the risk of overturning.
- Avoid sudden uphill turns on steep slopes.
- Always keep the tractor or towing vehicle in gear to provide engine braking when going downhill. Do not coast.
- Do not drink and drive!
- Comply with state and local laws governing highway safety and movement of farm machinery on public roads.
- Use approved accessory lighting flags and necessary warning devices to protect operators of other vehicles on the highway during daylight and nighttime transport. Various safety lights and devices are available from your dealer.
- The use of flashing amber lights is acceptable in most localities. However, some localities prohibit their use. Local laws should be checked for all highway lighting and marking requirements.

- When driving the tractor and equipment on the road or highway under 40 kph (20 mph) at night or during the day, use flashing amber warning lights and a slow-moving vehicle (SMV) identification emblem.
- Plan your route to avoid heavy traffic.
- Be a safe and courteous driver. Always yield to oncoming traffic in all situations, including narrow bridges, intersections, etc.
- Be observant of bridge loading ratings. Do not cross bridges rated lower than the gross weight as which you are operating.
- Watch for obstructions overhead and to the side while transporting.
- Always operate your equipment in a position to provide maximum visibility at all times. Make allowances for increased length and weight of the equipment when making turns, stopping the unit, etc.
- Pick the most level possible route when transporting across fields. Avoid the edges of ditches or gullies and steep hillsides.
- Be extra careful when working on inclines.
- Maneuver the tractor or towing vehicle at safe speeds.
- Avoid overhead wires or other obstacles. Contact with overhead lines could cause serious injury or death.
- Avoid loose fill, rocks and holes; they can be dangerous for equipment operation or movement.
- Allow for unit length when making turns.
- Operate the towing vehicle from the operator's seat only.
- Never stand alongside of unit with engine running or attempt to start engine and/or operate machine while standing alongside of unit.
- Never leave running equipment attachments unattended.
- As a precaution, always recheck the hardware on equipment following every 100 hours of operation. Correct all problems. Follow the maintenance safety procedures

FOLLOWING OPERATION

- Following operation, or when unhitching, stop the tractor or towing vehicle, set the brakes, disengage the PTO and all power drives, shut off the engine and **remove the ignition keys**.
- Store the unit in an area away from human activity.
- Do not park equipment where it will be exposed to livestock for long periods of time. Damage and livestock injury could result.
- Do not permit children to play on or around the stored unit.
- Make sure all parked machines are on a hard, level surface and engage all safety devices.
- Wheel chocks may be needed to prevent unit from rolling.
- Good maintenance is your responsibility. Poor maintenance is an invitation to trouble.

PERFORMING MAINTENANCE

- Make sure there is plenty of ventilation. Never operate the engine of the towing vehicle in a closed building. The exhaust fumes may cause asphyxiation.
- Be certain all moving parts on attachments have come to a complete stop before attempting to perform maintenance.
- Always use the proper tools or equipment for the job at hand.
- Use extreme caution when making adjustments.
- Never replace hex bolts with less than grade five bolts unless otherwise specified.
- After servicing, be sure all tools, parts and service equipment are removed.
- Where replacement parts are necessary for periodic maintenance and servicing, genuine factory replacement parts must be used to restore your equipment to original specifications. The manufacturer will not claim responsibility for use of unapproved parts and/or accessories and other damages as a result of their use.
- If equipment has been altered in any way from original design, the manufacturer does not accept any liability.

Assembly

SSC Models

- Attach the spreader disc to the output shaft on the gearbox. Secure in place with the cotter pin.
- Install the guard to the spreader frame using two M8 x 16 bolts, four M8 flat washers and two M8 hex nuts
- Insert the threaded bushing through the hopper bottom. Attach mobile shutter to the bushing and secure with the hex nut
- Slide the hopper onto the output shaft of the gearbox. Secure it to the frame using three M8 x 25 carriage bolts, three M8 fender washers and six M8 hex nuts
- Install the flow control assembly lever by tightening the two knobs.
- Install the stirrer using M8 x 35 hex bolts, two flat washers and one 8mm lock nut.
- Tighten all hardware

SSS Models

- Attach four spreader vans to the spreader disc with eight M6 x 16 hex bolts, eight M6 lock washers and six M6 hex nuts
- Assemble the scaled rod assembly to the main frame using M8 x 30 hex bolts, lock washers and nuts
- Install the protection on the spreader frame using two M8 x 20 hex bolts, flat washers and hex nuts
- Slide hopper onto the output shaft of the gearbox
- Secure hopper to frame using three M12 x 30 carriage bolts, flat washers and six M12 hex nuts. Install five carriage bolts when assembling the SSS-500.
- Install the stationary agitator using the M8 x 45 hex bolt, washers and lock nut.
- Install the shutter assembly into the slots on the bottom of the hopper
- Install the lever using the M8 x 20 hex bolt.
- Tighten all hardware.

ATTACHING TO THE TRACTOR

To attach the implement to the tractor to do the following:

Back the tractor up to the implement in order to slip the tractor hitch arms over the hitch pins bolted to the frame. **Turn off the tractor engine and engage the park brake.** Secure the two tractor hitch arms to the implement with lynch pins. Tighten the tractor arms side movement with either the sway chains or blocks to limit side swing. Connect the top link, locking it in place with the top hitch pin. Adjust it so the implement is as near parallel to the ground as possible with spout at a distance of 28 to 32 inches above the ground level.

Shortening a PTO Driveline if necessary

1. With the implement attached to the tractor's three-point hitch, and the PTO driveline not installed, separate the PTO driveline. Attach the implement end to the implement and the other end to the tractor PTO input shaft.
2. Raise the implement by using the tractor's hydraulic 3-point hitch to the tractor's maximum lift height.
3. Hold the half shafts next to each other and mark them so each end is approximately 1/2" from hitting the end of the telescopic profiles.
4. Shorten the inner and out guard tubes equally.
5. Shorten the inner and outer profiles by the same length as the guard tubes. Using a rattail file, round off all sharp edges and burrs. Grease the telescopic profile generously before reassembling.

Be sure each end of the driveline is connected securely with the locking pin on the tractor end and 2 roll pins on the implement end. Connect the driveline shielding chains to the tractor and to the implement to prevent the protective shielding from rotating during operation. If it was necessary to remove the PTO shielding to do any of the above operations, do not forget to replace it.

CAUTION: Load hopper with product only after the spreader has been properly attached to the tractor.

WARNING: Chemicals may cause eye, skin or breathing problems. Always wear a face mask, gloves and goggles when filling hopper. Refer to chemical manufacturer's label for specific safety information.

Operation

Before starting to use, never forget that the **operator is responsible** for the following:

1. Safe and correct driving of the tractor and spreader.
2. To learn precise, safe operating procedures for both the tractor and the spreader.
3. To ensure all maintenance and lubrication has been performed on the spreader.
4. To have read and understood all safety aspects for the spreader in the Operator's Manual.
5. To have read and understood all safety decals on the spreader.
6. Checking the tractor tires for the proper pressure in accordance with the tractor Operator's Manual.
7. **Checking that all shields are on the machine and securely in place.**
8. Making sure the proper attire is worn. Avoiding loose fitting clothing which can become entangled. Wearing sturdy, tough-soled work shoes and protective equipment for eyes, hands, ears and head. Never operate tractor or implements in bare feet, sandals or sneakers.
9. Ensuring proper lighting is available, sunlight or good artificial lighting.

Prior to start working do the following:

1. Make sure there are no obstructions.
2. Run machine under a no-load condition for a short while to assure that everything is functioning properly.
3. Adjust all settings for the desired quantity distribution and spread pattern.
4. Shift the transmission to a slow speed gear and start forward, increase the ground speed by shifting upward until the desired speed is obtained. Do not use in reverse unless it is absolutely necessary and only after careful observation of the area behind the spreader.

Operating Techniques

The material delivery is controlled by a lever that opens the orifices in the hopper bottom. To ensure a constant output of product always keep in mind the following factors:

The quantity of material distributed per acre depends on the following factors:

1. Tractor ground speed.
2. Unit weight and size of the material to be spread.
3. Spreading width.
4. Position of the lever connected to the hopper gates.

The working speed depends on ground conditions. Only a test run will enable you to gauge the optimal working speed for your conditions.

MODEL SSC

To regulate the **spread pattern** (to the right or left), loosen the knob over the shield and swivel the lever to left-center or right position. When the lever is in the center, the pattern will be mostly spread 180 degrees even behind the tractor. If the lever is move towards the right, the spread pattern will mostly be towards the left. When positioned to the far left, the pattern will mostly be towards the right.

Due to material being spread, the left, center, right pattern will vary.

To regulate the **amount of material** to be spread, slide the lever in and out to the desired opening. Use the scale located on the shutter lever to determine the size of the opening at the bottom of the hopper. Once this is determined, loosen the knob so the blocking plate will stop at the desired setting.

MODEL SSS

There are two means of adjusting the spread pattern of the spreader:

There are two spring loaded gates at the bottom of the hopper, by opening one or the other, or both varies the spread pattern. When spreading center behind the tractor, both gates should be open. To spread more to one side or the other, open the opposite side and close the gate on the side to which the spread pattern is desired. The side that the closed gate is on, more material will be dispersed towards that side.

Further adjustments can be made by positioning the spreading vane in one of 5 holes supplied on the disc. Moving the vanes counterclockwise makes the material to spread more to the right.

Service

After each use:

1. Be sure to thoroughly wash the machine without using excessive pressure especially on the moving parts. It is particularly important to wash the implement after using salt or fertilizer. This will help prevent the caustic chemicals in the salt and fertilizer from destroying the metal of the machine.
2. Carefully dry the machine.
3. Apply a thick layer of grease to all exposed moving parts.
4. Apply a film of biodegradable oil in crevices and corners.
5. Grease the driveline cross and bearing and shielding.
6. Grease the telescoping inner and outer tubes.

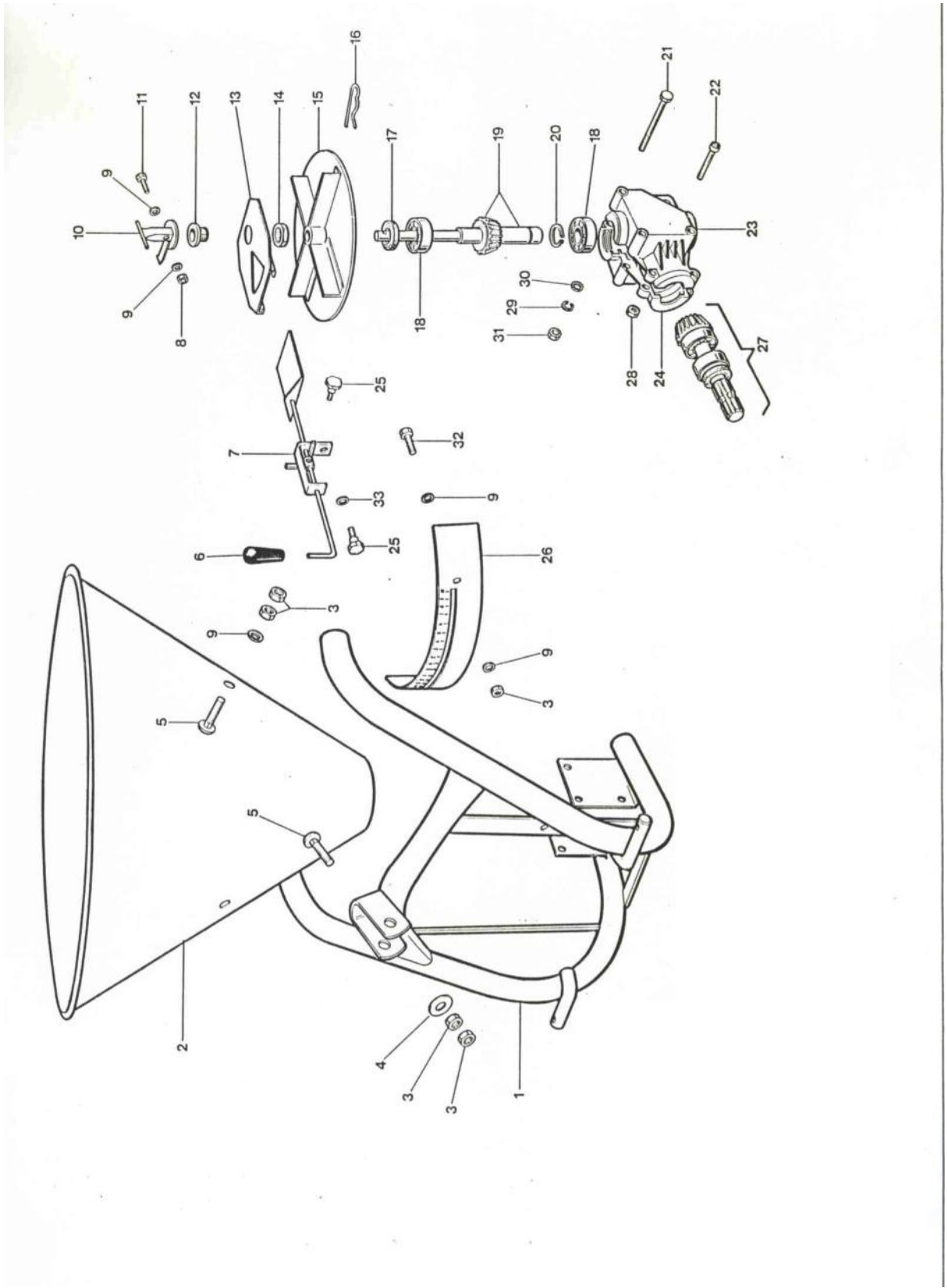
Spread Charts

Model SSS-100 & SSC-100 Swath Spread Patterns (lbs/acre)			
	Spreading width 20 feet		
Lever	2.5 mph	3.75 mph	5 mph
1	89	45	39
2	143	89	71
3	223	152	107
4	312	196	152
5	419	277	205
6	553	330	277
7	651	410	321
8	767	473	384
9	874	562	437
10	999	625	500

Models SSS-& SP SWATH SPREAD PATTERNS (lbs/acre)			
	Spreading width 46 feet		
Lever	2.5 mph	5 mph	7.5 mph
1	89	39	16
2	143	61	43
3	223	123	82
4	312	184	123
5	419	246	166
6	553	307	201
7	651	369	246
8	767	430	282
9	874	492	323

Tar River Equipment

SSC-100- SSC-150



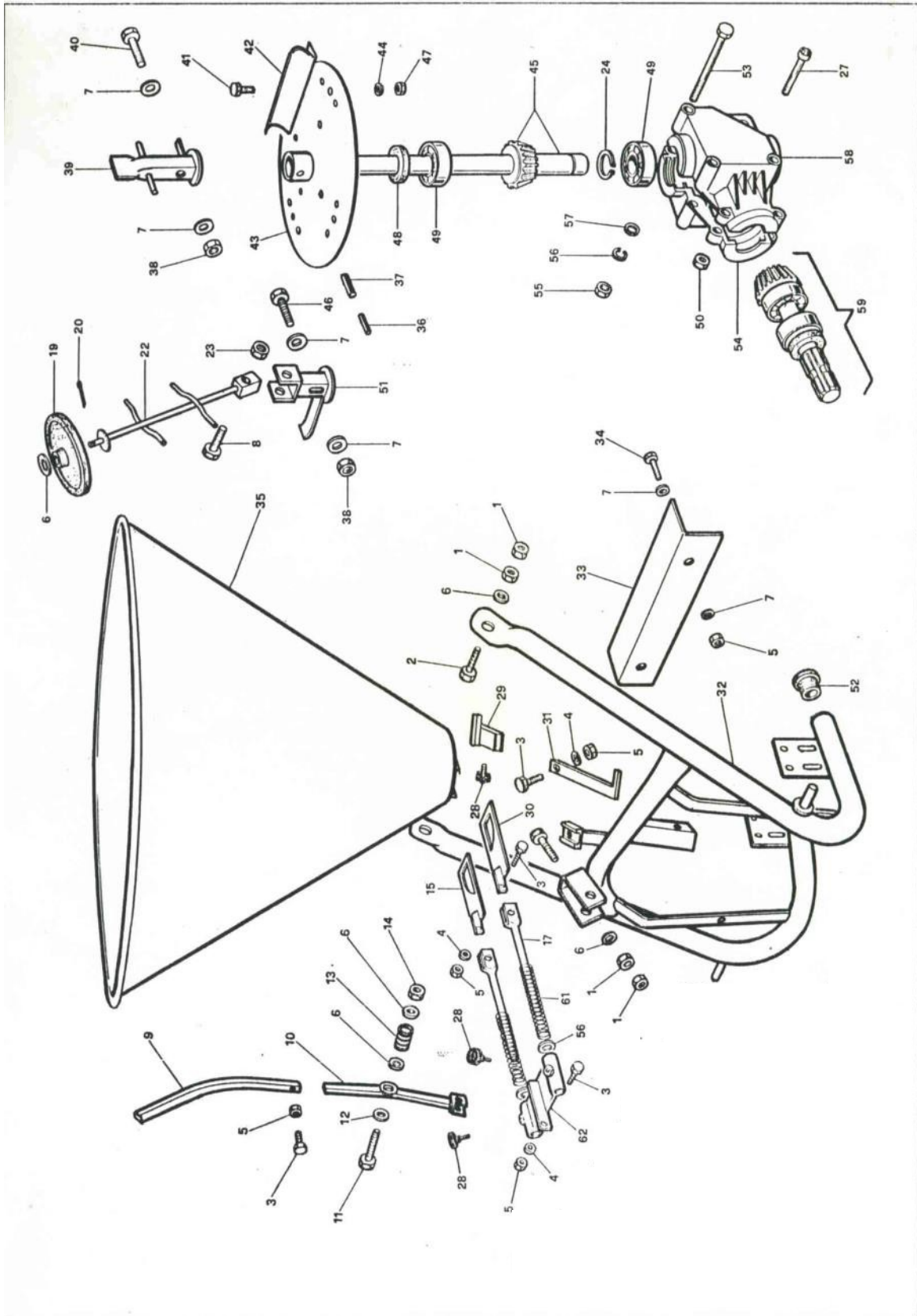
Tar River Equipment

SSC-100 & SSC-150

POS.	Part #	Description	Qty
1	RP03-150-01-00	Frame	1
2/A	RP03-100-02-00	Hopper SSC-100	1
2/B	RP03-149-02-00	Hopper SCC-150	1
3	NM08125	Nut- M8 x 1.25	8
4	FW08	Washer- M8	1
5	CBM0812525	Carriage Bolt- M8 x 1.25 x 25	3
6	RP02-000-34-00	Shutter Regulation Knob	1
7	RP02-000-19-00	Shutter Adjusting device	1
8	LNM08125	Self-locking Nut- M8 x 1.25	1
9	FW08	Washer- M8	8
10	RP03-000-10-00	Agitator	1
11	BM0812535	Bolt- M8 x 1.25 x 35 8.8	1
12	RP03-000-12-00	Threaded bushing	1
13	RP02-000-48-00	Mobile shutter	1
14	TNM302	Thin Nut- M30 X 2.0	1
15	RP03-000-15-00	Spreader disc	1
16	RC5	R-Clip- M5	1
17	OS253705	Oil Seal- M25 x 37 x 5	1
18	B6205	Bearing- 6205	2
19	RP03-150-19-01	Output Shaft	1
20	RP04-150-24-01	Spring ring- M25	1
21	BM1015110	Bolt- M10 x 1.5 x 110	3
222	RP04-150-27-01	Allen Bolt- M8 x 1.25 x 45 8.8	3
23	RP04-150-58-01	R.S. half box L150	1
24	RP04-150-54-01	L.S. half box L150	1
25	RP02-000-20-00	Hand Wheel- M6 x 1.0 x 15	2
26	RP03-000-26-00	Guard	1
27	RP04-150-59-01	Input shaft	1
28	NM08125	Nut- M8 x 1.25	3
29	LW10	Lock washer- M10	3
30	FW10	Washer- M10	3
31	NM1015	Nut- M10 x 1.5	3
32	BM0812516	Bolt- M8 x 1.25 x 16	2
33	FW06	Washer- M6	1
70	RP03-150-60-00	PTO Shaft Complete	1
80	RP03-150-71-01	Gearbox assembly	1

Tar River Equipment

SSS-300 SSS-400 SSS-500 SP500



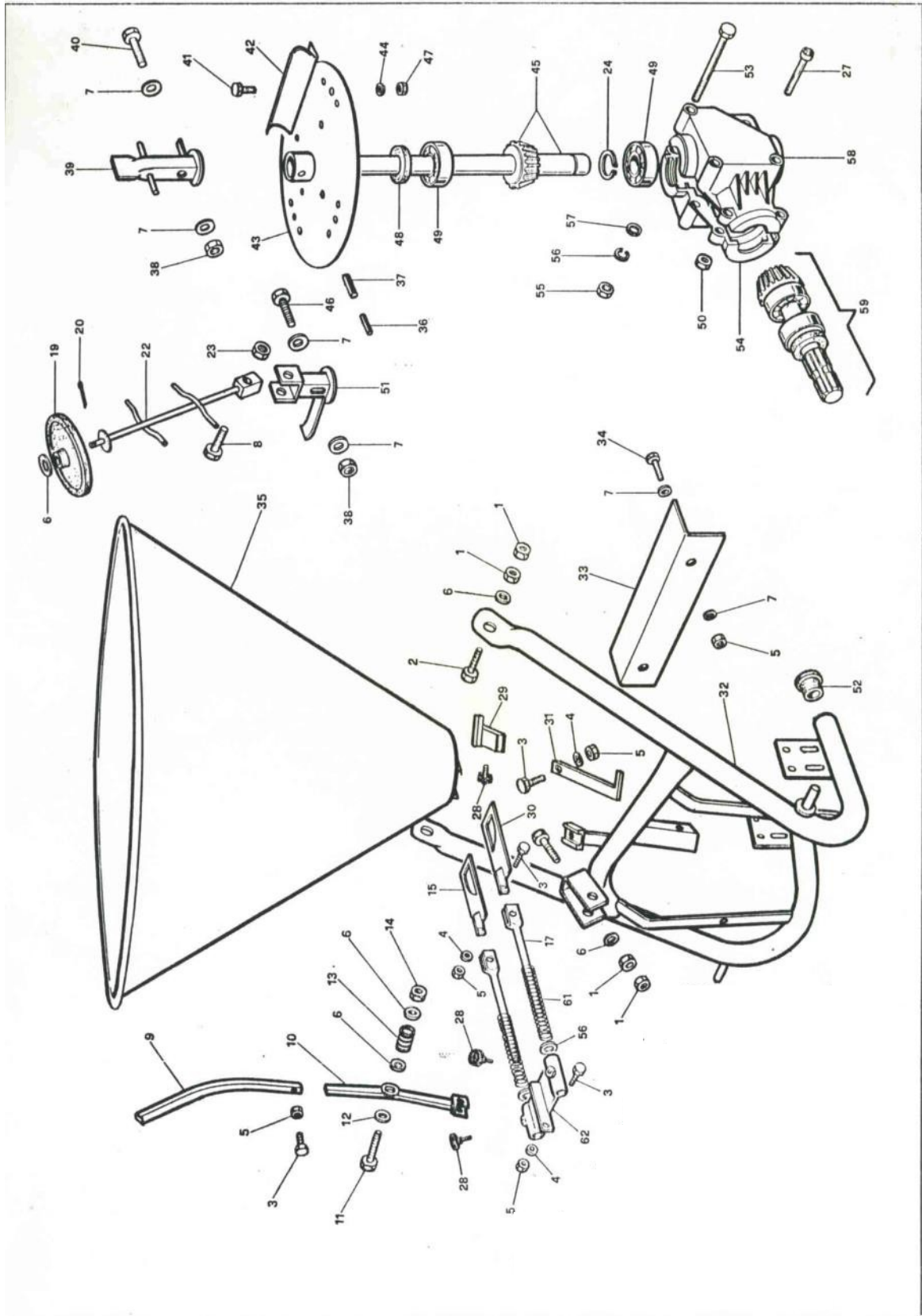
Tar River Equipment

SSS-300 SSS-400 SSS-500 SP500

POS	Part #	Description	Qty
1	NM12175	Nut M12 x 1.75	6
2	CBM1217530	Carriage Bolt- M12 x 1.75 x 30	3
3	BM812525	Bolt -M8 x 1.25 x 25	5
4	LW08	Lock Washer- M8	4
5	NM08125	Nut- M8 x 1.25	7
6	FW14	Washer- M14	5
7	FW08	Washer- M8	6
8	BM101550	Bolt- M10 x 1.5 x 50 8.8	1
9	RP04-000-09-00	Lever	1
10	RP04-002-10-01	Lever Bracket	1
11	BM1217580	Bolt- M12 x 1.75 x 80	1
12	RP04-000-12-00	Nylon Washer- M12 x 48 x 3	1
13	RP04-000-13-00	Spring	1
14	LNM12175	Self-locking Nut- M12 x 1.75	1
15	RP04-002-15-01	Left Shutter	1
15/A	RP04-002-15-10	Left Shutter \ Stainless steel	1
17	RP04-002-17-01	Tie Rod	2
19	RP04-000-19-00	Rubber wheel	1
20	CP4x45	Cotter Pin- M4 x 45	1
22	RP04-000-22-00	Powder stirrer shaft	1
23	LNM1015	Self-locking Nut- M10	1
24	RP04-150-24-01	Snap Ring- External- M25	1
27	RP04-150-27-01	Allen Bolt- M8 x 1.25 x 45 8.8	3
28	RP04-000-28-00	Hand wheel- M15	3
29	RP04-000-29-00	Lever Stopper	1
30	RP04-002-30-01	R.S shutter	1
30/A	RP04-002-30-10	R.S shutter / Stainless steel	1
31	RP04-002-31-01	Scaled Rod	1
32	RP04-150-32-01	Frame- SP 300-500	1
33	RP04-000-33-00	Guard	1
34	BM0812520	Bolt- M8 1.25 x 20	2
35	RP04-300-35-10	Hopper SSS-300	1
	RP04-400-35-10	Hopper SSS-400	1
	RP04-500-35-10	Hopper SSS-500	1
	RP04-500-35-31	Hopper SP-500 Poly	1
36	RP04-000-36-00	Spring Pin- M5 x 40	1
37	RP04-000-37-00	Spring Pin- M8 x 40	1
38	LNM08125	Self-Locking Nut- M8 x 1.25	1

Tar River Equipment

SSS-300 SSS-400 SSS-500 SP500



Tar River Equipment
SSS-300 SSS-400 SSS-500 SP500

POS.	Part #	Description	Qty
39	RP04-000-39-00	Agitator	1
40	BM0812540	Bolt M8 x 1.25 x 40 8.8	1
41	BM061014	Bolt M6 x 1.0 x 14	8
42	RP04-000-42-00	Spreader Wing	4
42/A	RP04-000-42-10	Spreader wing \ Stainless steal	4
43	RP04-000-43-00	Spreader disc	1
44	LW06	Lock washer- M6	8
45	RP04-150-45-01	Output shaft	1
46	BM0812545	Bolt- M8 x 1.25 x 45 8.8	1
47	NM0610	Nut- M6 x 1.0	8
48	OS253705	Oil Seal- M25 x 37 x 5	1
49	B6205	Bearing- 6205	2
50	RP04-150-50-01	Nut M8 x 1.25	3
51	RP04-000-51-00	Powder articulated stirrer	1
52	RP04-000-52-00	Rubber Cap 60	2
53	BM1015110	Bolt- M10 x 1.5 x 110	3
54	RP04-150-54-01	Left half box L150	1
55	NM1015	Nut- M10 x 1.5	3
56	LW10	Lock washer- M10	3
57	RP04-000-57-00	Washer- M10	5
58	RP04-150-58-01	Right half box L150	1
59	RP04-150-59-01	Input shaft	1
61	RP04-002-61-00	Spring—Tie Rod	2
62	RP04-002-62-00	Tie Rod plate	1
70	RP04-150-70-00	Complete PTO Shaft	1
80	RP04-150-71-01	Complete gear box	1
90	ARS-12	Complete articulated stirrer	1

LIMITD WARRANTY

Tar River Equipment warrants to the original purchaser of any new piece of machinery from Tar River Equipment, purchased from an authorized Tar River Equipment dealer, that the equipment be free from defects in material and workmanship for a period of one (1) year for non-commercial, state, and municipalities' use, ninety (90) days for commercial use from date of retail sale. Warranty for rental purposes is thirty (30) days. The obligation of Tar River Equipment to the purchaser under this warranty is limited to the repair or replacement of defective parts.

Replacement or repair parts installed in the equipment covered by this limited warranty are warranted for ninety (90) days from the date of purchase of such part or to the expiration of the applicable new equipment warranty period, whichever occurs later. Warranted parts shall be provided at no cost to the user at an authorized Tar River Equipment dealer during regular working hours. Tar River Equipment reserves the right to inspect any equipment or parts which are claimed to have been defective in material or workmanship.

This limited warranty does not apply to and excludes wear items such as shear pins, tires, tubes knives, blades or other wear items. Oil or grease is not covered by this warranty.

All obligations of Tar River Equipment under this limited warranty shall be terminated if:

Proper service is not performed on the machine

The machine is modified or altered in any way.

The machine is being used or has been used for purposes other than those for which the machine was intended.

DISCLAIMER OF IMPLIED WARRANTIES & CONSEQUENTIAL DAMAGES Tar River equipment obligation under this limited warranty, to the extent allowed by law, is in lieu of all warranties, implied or expressed, including implied warranties of merchantability and fitness for a particular purpose and any liability for incidental and consequential damages with respect to the sale or use of the items warranted. Such incidental and consequential damages shall include but not be limited to: transportation charges other than normal freight charges; cost of installation other than cost approved by Tar River Equipment; duty; taxes; charges for normal service or adjustment; loss of crops or any other loss of income; rental of substitute equipment, expenses due to loss, damage, detention or delay in the delivery.